

AUCKLAND PROVINCE.—Continued



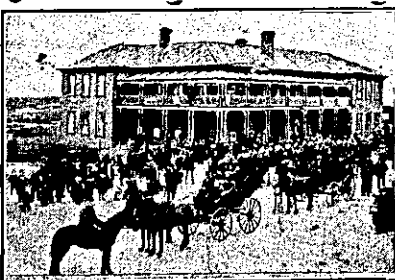
JUNCTION HOTEL, EPSOM.

Buses and trams pass here on their way to and from Ellerslie Racecourse and Alexandra Park Football Ground.

WINES, SPIRITS AND BEERS—BEST ONLY.

Give me a Call—

J. COTTERALL Proprietor.



PALACE HOTEL

THE PREMIER HOTEL OF TE AROHA.

FRANK PILLING Proprietor.

Offers Special Accommodation for Tourists, Families and Visitors.

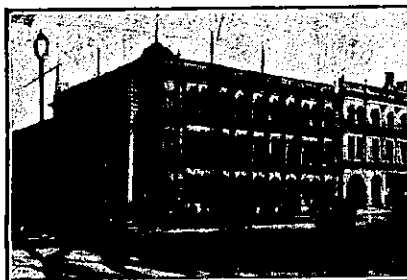
Commercial Sample Room. Telegrams Promptly Attended to.

Spacious Bedrooms, Private Parlours.

Hot, Cold, and Shower Baths.

TARIFF: 35s Per Week, or 6s Per day.

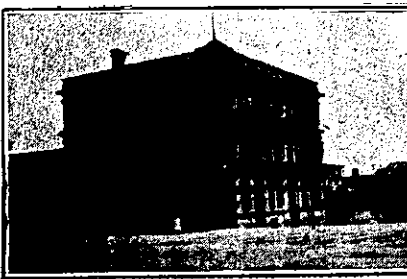
THE SPORTING HOTEL OF THE DISTRICT



WAITEMATA HOTEL, Cor. QUEEN & CUSTOM STS., Auckland. Close to the Wharf and Railway Station.

VISITORS WILL FIND EVERY COMFORT AND CONVENIENCE.

JOHN ENDEAN Proprietor. Telephone 583.



CITY HOTEL, Corner of VICTORIA & HOBSON STS., AUCKLAND.

WALTER STIMPSON (Late of the Queen's Ferry). Will be glad to welcome Old and New Friends at the above Popular House.

The Wines, Spirits, Ales and Cuisine will be found to be unexceptionable, while the Accommodation is thoroughly modern.

MANUKAU HOTEL, ONEHUNGA WHARF, Queen-st., Onehunga.

This Hotel is directly situated on the Onehunga Wharf, and is therefore specially adapted for travellers either leaving or arriving from Wellington and the South via New Plymouth. Good Accommodation and Table. Only the Best Brands of Liquor kept. Stabling. Boating and Fishing Parties arranged.

T. MICHAELS Proprietor.

HUNTLY HOTEL, HUNTLY.

L. B. HARRIS Proprietor.

This Hotel is now one of the largest in the Waikato. All trains stop at Huntly, and the Hotel is a few yards from the Station. First-class Accommodation and Excellent Table.

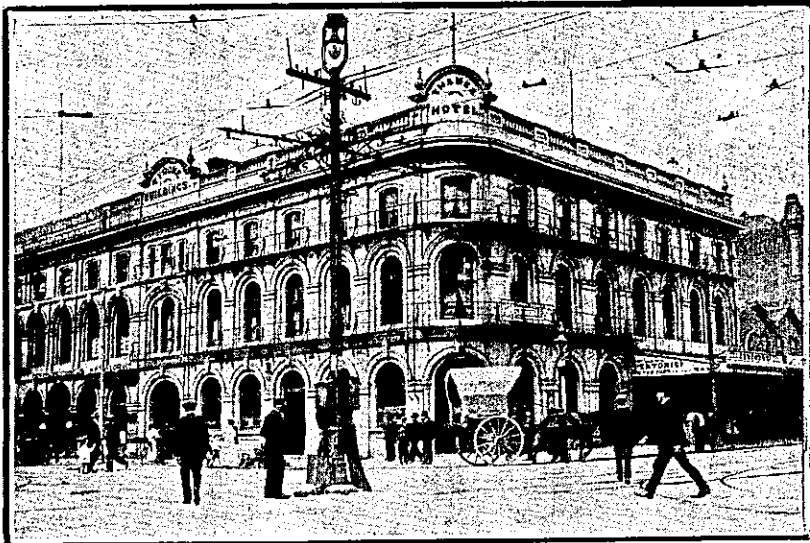
TAILORING! TAILORING!

J. MCWILLIAMS,

HIGH-CLASS TAILOR.

5, VICTORIA-STREET EAST (A.M.P. Buildings).

LATEST STYLE AND FIT GUARANTEED.



JAMES HOTEL, QUEEN AND CUSTOM STREETS, AUCKLAND.

MR. T. B. O'CONNOR (late Victoria Hotel) begs to inform the Public that he has taken over the above Hotel. The Hotel has been thoroughly renovated, and now offers Accommodation second to none in Auckland. Handy to Trains, Boats, and Trams. Excellent Table, and only Best Brands of Ales, Wines and Spirits on Stock.

T. B. O'CONNOR Proprietor.



GROSVENOR HOTEL,

(Late Governor Browne),

HOBSON STREET, AUCKLAND, N.Z.

E. BULLER, Proprietor.

This well-known Hotel has been thoroughly Renovated and Refurnished throughout.

Every Modern Comfort and Convenience for Tourists, Travelers and Families. FIRST-CLASS BILLIARD TABLE.

WINES AND SPIRITS OF THE BEST BRANDS ONLY.

TERMS MODERATE. Telephone 1153.

NOTICE.

If you are interested in Motor Cars, Motor Cycles, or Bicycles in any way, you cannot afford to do without the "New Zealand Motor and Cycle Journal," 3s 6d per annum, posted to any address in New Zealand. Write to ARTHUR CLEAE AND CO., Vulcan Lane, Auckland.

WELLINGTON PROVINCE.

ALBION HOTEL,

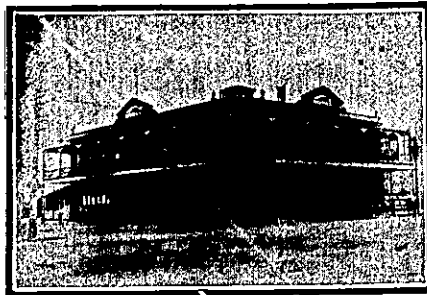
PATEA.

B. T. BENNETT,

PROPRIETOR

(Late of Masonic Hotel, Wanganui).

Having taken over this well-known house, B.T.B. will endeavour to see that Travellers and the General Public will have the very best of everything.



MANCHESTER HOTEL, FEILDING.

This centrally and conveniently-situated Hotel offers the best Accommodation for the Travelling Public. Replete with every modern convenience. Best Brands of Ales, Wines, Spirits, etc., kept on Stock.

D. P. BARRETT Proprietor.

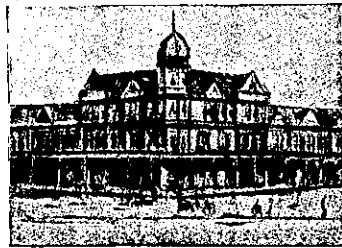
METROPOLITAN HOTEL,

MOLESWORTH-ST., WELLINGTON.

MRS. JANE ORMSBEE .. Proprietress (Late of Clyde Quay Hotel, formerly of Central and Oriental Hotels).

FIRST-CLASS ACCOMMODATION FOR BOARDERS.

Close to Government and Manawatu Railway Stations. Telephone 1026. Trams stop at door.

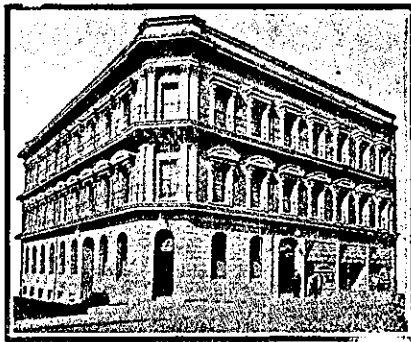


RUTLAND HOTEL, WANGANUI.

F. C. FABER Proprietor.

THE HOME OF THE TOURIST.

The above Hotel has just been rebuilt and newly furnished throughout in an up-to-date style. The reading, writing and smoke rooms are replete with every convenience. The greatest care is taken to maintain a reputation for home comfort. Dark room for photographers.



THE NEW ZEALANDER HOTEL,

MANNERS-STREET (close to Opera House), WELLINGTON.

M. J. ("TED.") DONNELLY, Proprietor (Late of Masonic Hotel, Wellington).

This Hotel has recently been rebuilt, and is now ready to accommodate Commercial Travellers and the Travelling Public.

Letters and Telegrams receive prompt attention.

Telephone No. 1701. P.O. Box 557.

WELLINGTON.—Cont.

THE EMPIRE HOTEL

(LIMITED).

THE LEADING AND MOST CENTRAL HOTEL IN WELLINGTON.



BARRETT'S HOTEL,

LAMBTON QUAY, WELLINGTON.

(Opp. Bank of New Zealand).

Newly Built in Brick. Over 70 Rooms. All Modern Conveniences.

Close to Wharf and Post Office. Excellent Table kept. Day and Night Porters in attendance. Tariff 7s per day, weekly by arrangement. Letters and Telegrams receive prompt attention. Phone 1076.

W. M. KELLY Proprietor.



CENTRAL HOTEL, PALMERSTON NORTH.

The Central Hotel on Main-st. West in Palmerston is surely the best. The tables good, the bedrooms fine. With best of spirits, beer and wine; Fine sitting-rooms, baths hot and cold. And a welcome sure for young and old; So call on me when next you pass, And w'll enjoy a friendly glass.

A. F. ANDERSON Proprietor.

CLUB HOTEL, PALMERSTON NORTH.

H. B. TUCKER Proprietor.

This Hotel stands on about two acres of land, and includes a large garden and stables, twelve large, well-lighted and ventilated Sample Rooms. Telephone 29. P.O. Box 46.

UNDER THE IMMEDIATE SUPERVISION OF MR AND MRS. H. B. TUCKER.

POST OFFICE HOTEL, FOXTON.

THE LEADING HOTEL OF "FLAXOPOLIS."

Coaches leave hotel for Shannon and Levin.

BEST OF WINES AND SPIRITS. SPEIGHT'S BEER.

GEO. GRAY Proprietor.

CASEY'S FAMILY HOTEL, LOWER HUTT.

JOHN YOUNG .. Proprietor.

This hotel offers accommodation second to none in the district. Central position and close to the Post Office.

Billiards, Excellent Table, and Best Brands of Wines and Spirits. Only Speight's Beer drawn.

Good Stabling and Commodious Loose Boxes.

DEVINE'S EMPIRE HOTEL, MAIN STREET, PALMERSTON NORTH.

A First-class Family and Commercial Hotel. Convenient to all public offices and places of amusement. Letters and telegrams will receive prompt attention. Telephone 108. P.O. Box 193.

W. DEVINE Proprietor.

THE NEW RAILWAY HOTEL, (Opposite Railway Station) PALMERSTON NORTH.

J. HURLEY Proprietor.

Over 70 Rooms, 6 Bathrooms (hot and cold water), newly furnished throughout. Up-to-date in every respect. First-class Table. Best Liquors only. Terms Moderate.