

**AUCKLAND.—Cont.**

**STAR HOTEL, NEWTON.**

W. G. RAE (late of Railway Hotel, Drury).

HANCOCK'S SPECIAL BREW ON DRAUGHT.

Pleased to see all old friends and visitors generally.

Telephone, 635.



**COMMERCIAL HOTEL, WHANGAREI.**

W. T. BRAY

Having taken over the above Hotel, has increased the Accommodation and renovated the Premises throughout. Customers can rely on Every Comfort and Attention

THE BEST BRANDS OF WINES AND SPIRITS KEPT IN STOCK.

Ample Sample Rooms for Commercial Travellers. Good Billiard Table. Stable Accommodation Superior to anything North of Auckland.



**VICTORIA HOTEL, VICTORIA-STREET, AUCKLAND.**

Wines and Spirits of Best Brands. First-class Accommodation for Visitors. Splendid Billiard Table and Appointments. T. B. O'CONNOR ..... Proprietor.

**TAURANGA HOTEL, STRAND, TAURANGA.**

Under New Management. T. R. NIXON,

(Late of Carpenters' Arm, Auckland), Desires to intimate that he has taken over the above popular House, where he will be pleased to meet old and new Patrons. Extensive Alterations and Improvements have been effected, and Visitors will find every comfort and convenience. Tariff moderate. Wines and Spirits of Best Brands only. Night Porter in attendance.

**PAPAKURA HOTEL, PAPAKURA.**

Notice to Cyclists, Footballers, and others.—Your old friend Thos. McEwin has taken over the above Hotel, and will be pleased to see all old faces. Splendid Accommodation and Cuisine. Large Rooms for use of Clubs.

THOS. McEWIN ..... Proprietor.



**TRAMWAY HOTEL, KARANGAHAPE.**

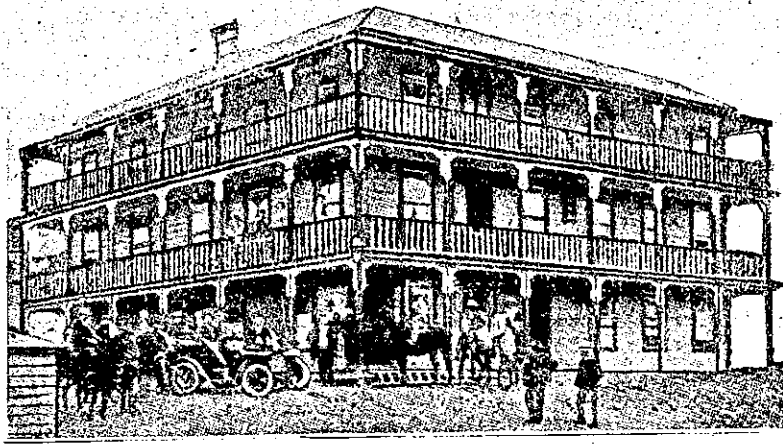
Across the Bridge.

MR. P. CROSBY ..... Proprietor.

This is the best Hotel in the district, is lighted up by electricity, and has the reputation of only keeping first-class Ales and Spirits. The Table is excellent. Hot and Cold Baths always ready. Attached to the hotel is the well-known Lyceum Hall, which is also lighted up with electricity.

**RISING SUN HOTEL, KARANGAHAPE ROAD.**

J. McKEANE, so long and favourably known at Panmure in connection with hotel-keeping, wishes to announce that he has taken over the Rising Sun Hotel, Karangahape Road, where he hopes to see all his old and new friends who may pass his way. Superior Accommodation for Boarders. Telephone 1717.

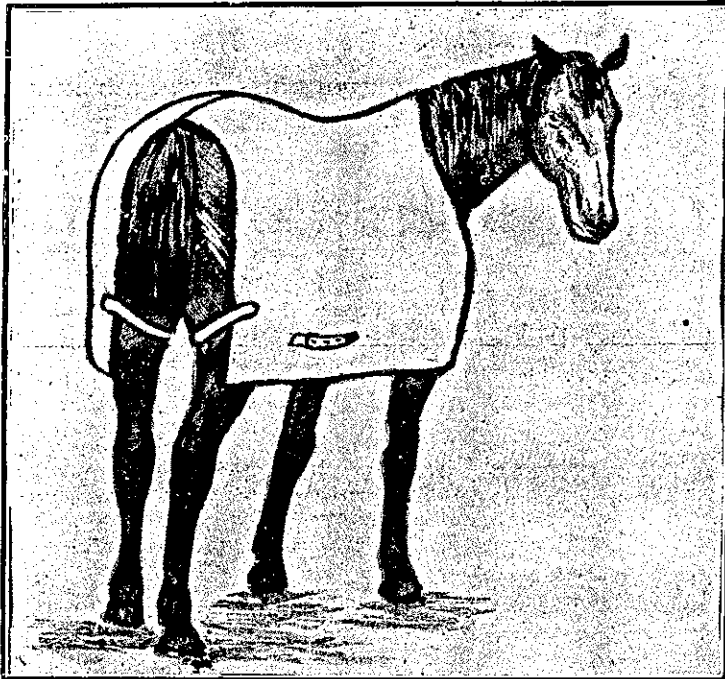


**JUNCTION HOTEL, KAWAKAWA.**

G. MARSHALL Proprietor.

The Proprietor begs to acquaint the numerous friends of the above well-known favourite and spacious Hostelry, that he has become lessee, and hopes by strict attention and civility to customers, to merit a continuance of the liberal support accorded to the house in the past. Wines, Spirits, and Beers of the First Quality. Billiards, Buggies, etc. Sample Rooms. The Best of Accommodation. A Good Table kept. Charges Moderate.

**MCFARLANE'S PATENT HORSE COVERS**



This Cover has been recognised by Experts as being an Article in advance of anything of the kind ever offered to the public.

This Cover does away with the annoyance usually caused by ordinary covers becoming displaced, as in the case of a horse rolling. There is no crupper used, consequently the horse does not suffer from chafing or cutting of the tail, which often causes lockjaw. The mode of attachment is simplicity itself, viz., the straps for fastening going round each hind leg, as shown in above drawing.

To be had from all Storekeepers and Saddlers.

**Archibald Clark & Sons, Limited.**  
MANUFACTURERS. AUCKLAND.

If you Suffer from

Indigestion

Gout, Rheumatism

Kidney Troubles

"Throw Physio to the Dogs"

AND DRINK

**PURIRI**

Natural Mineral Water

**NATURE'S SIMPLE AND WONDERFUL CURE.**

The Table Water of the age.

Mixed with Spirits makes an agreeable beverage.

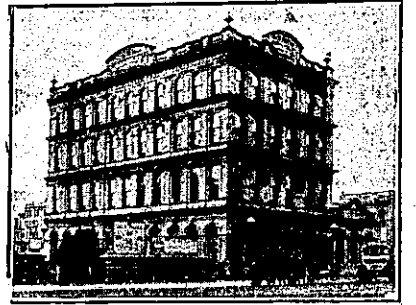
At all Leading Houses, and on Board the Steamers of the Union S.S. Company.

Agents in all New Zealand Cities.

**The Campbell and Ehrenfried Company, Limited, Auckland**  
PROPRIETORS.

**NOTICE.**

If you are interested in Motor Cars, Motor Cycles, or Bicycles in any way, you cannot afford to do without the "New Zealand Motor and Cycle Journal," 3s 6d per annum, posted to any address in New Zealand. Write to us, ARTHUR CLEAVE AND CO., Vulcan Lane, Auckland.



**WAVERLEY HOTEL, QUEEN-STREET, AUCKLAND.**

Near Railway Station, Tram Terminus, the Wharf, and 'Bus Stands.

First-class Table d'Hote. Conveyance meets Steamers and Trains. Tariff: 7s per day; £2 2s per week.

Telephone 370.

This Hotel has a beautiful view of the Harbour.

MAURICE O'CONNOR ..... Proprietor.

**NEWMARKET HOTEL, NEWMARKET.**

J. GILLANDER ..... Proprietor.

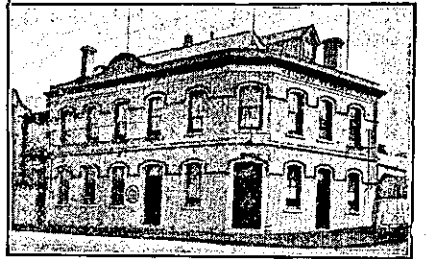
Best Brands of Wines and Spirits.

Secombe's Sparkling Ale on Draught.

**EPSOM HOTEL, EPSOM (Opposite Alexandra Park).**

GEO. BISHOP ..... Proprietor.

Secombe's Sparkling XXXX Ales on Draught. Wines and Spirits (of all brands) of the highest quality. Telephone 1143.



**RAILWAY TERMINUS HOTEL (Beach Road, Auckland).**

J. A. DOUGLAS ..... Proprietor.

(Late of Paeroa) Wishes to inform his old friends that he has taken over the above Hotel, and would be glad to renew their acquaintance when visiting town.

Only five minutes from Thames Hotel, Queen-street.



**WHANGAREI HOTEL, WHANGAREI.**

This fine House, just re-built in brick and furnished in up-to-date style, now offers unrivalled accommodation to the Travelling Public.

Sample Room. Hot and Cold Baths. Two minutes' walk from Saltwater Bathing Place.

Stabling Second to None. Best Wines, Ales and Spirits Kept in Stock.

SAMUEL McMAHON ..... Proprietor.



**IMPERIAL HOTEL, FORT-STREET, AUCKLAND.**

A First-class Family and Commercial Hotel, convenient to all public offices and places of amusement. Letters and Telegrams will receive prompt attention. Telephone Exchange. Sample Rooms. Private Bar. Thos. Cook and Son's Coupons Accepted. GEORGE H. FOSTER ..... Proprietor.