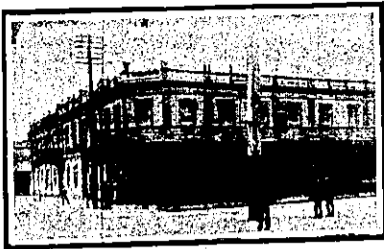


HAWKE'S BAY PROVINCE.



CRITERION HOTEL, NAPIER.

First-class Accommodation for Tourists, Families and Commercial Men.

S. CHARLTON Proprietor.

TARADALE HOTEL, TARADALE (NEAR NAPIER).

This Hotel just rebuilt and refurnished in modern style, offers excellent Accommodation to the Travelling Public. Hot and Cold Baths. Liquors of the best brands procurable. Splendid and ample paddocking, stables and loose boxes.

A. & TZWILLIAM .. Proprietor.

RAILWAY HOTEL, HASTINGS.

PERCY MARTIN .. Proprietor.

First-class Accommodation to the Travelling Public.

Wines and Spirits of the Best Brands. First-class Billiard Rooms.

ROYAL HOTEL, CARLYLE-STREET, NAPIER

(Right opposite Recreation Ground).

GEO. H. GILDING Proprietor.

ANDREWS' HOTEL, DANNEVIRKE. Patronised in London by H.M. King Edward VII.

The appointed House for the Commercial Travellers and Warehousemen's Association. Large Sample Rooms.

W. E. ANDREWS, Owner.

CLUB HOTEL, DANNEVIRKE.

J. HALLIGAN Proprietor.

This Well-known Establishment, which adjoins Dannevirke Railway Station, offers unsurpassed Accommodation to Travellers and the General Public.

ONLY BEST QUALITIES OF ALES, WINES, AND SPIRITS STOCKED.

TAVISTOCK HOTEL, WAIPUKURAU.

FIRST-CLASS ACCOMMODATION FOR VISITORS.

WINES AND SPIRITS OF THE BEST BRANDS.

Benzine and Naphtha stocked for the convenience of Motorists.

R. CONEYS Proprietor.

COMMERCIAL HOTEL, WAIPAWA

Private Suites of Apartments and every Convenience for the Accommodation of the Public.

WINES, SPIRITS and BEER OF THE BEST QUALITY ONLY.

A FIRST-CLASS BILLIARD TABLE. Good Stabling and Paddock Accommodation.

W. FELLOW .. Proprietor.

SOUTHLAND PROVINCE.



APARIMA HOTEL, SOUTH RIVERTON.

T. R. CARROLL begs to inform intending visitors to Riverton that he has taken over the beautifully-situated Seaside APARIMA HOTEL. The Hotel is connected to all parts of Southland by telephone. Nothing but First-class Wines and Spirits in stock, and Speight and Co.'s famous Beer. For tariff and further particulars apply to the Proprietor, T. R. CARROLL. Telephone No. 4.

When doing business with our Advertisers, kindly mention this paper.

HAWKE'S BAY—Continued.



EMPIRE HOTEL, NAPIER

(Close to Post Office).

38 Bedrooms, Commercial Room, Sitting Rooms, Study, etc. Hot, Cold, and Shower Baths. Tam-o'-Shanter and Oban Whisky. Speight's and Manning's Ales. Tariff, 5s per day; 25s per week.

JOHN BURRIDGE Proprietor. (For 23 years manager of Hawke's Bay Club).

CANTERBURY PROVINCE.

CLUB HOTEL, TIMARU.

Close to Railway Station, and offering Excellent Accommodation to Travellers.

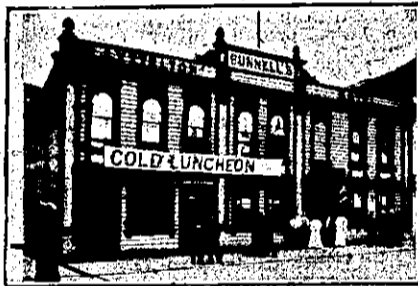
Liberal Cuisine. Hot and Cold Baths. Best Brands of Liquors Stocked. Moderate Tariff.

E. WARD .. Proprietor.

MASONIC HOTEL, CHRISTCHURCH.

VISITORS to above Hotel will find a Comfortable HOME, with Moderate Tariff.

EDWARD POWER (late Dunedin), Proprietor.



LYTTELTON HOTEL, LYTTELTON.

(Under new management) The above Hotel has been renovated throughout, and now offers Accommodation second to none in Lyttelton. Cuisine under the personal supervision of Mrs. Bunnell. Hot and Cold Water Baths. Best Brands of Ales, Wines, and Spirits. Excellent Billiard Table. Tariff Moderate.

J. E. BUNNELL

(Late of Working Men's Club, Ashburton), Proprietor.

CAVE ROCK HOTEL, SUMNER.

(Under entirely new management). Beautifully situated, facing the sea, right opposite Cave Rock. The House has been thoroughly renovated throughout, and now offers Accommodation second to none. Best Brands of Wines, Ales, and Spirits. Crown XXX Ales on Draught. Good stabling. Trams stop at the door. Terms, 6s per diem, or 30s per week. Families and Permanent Boarders by arrangement.

H. L. THOMPSON .. Proprietor.

QUEEN'S HOTEL, TIMARU.

S. G. BRYAN .. Proprietor.

Corner of Barnard and North Streets. Opposite Law Courts. Commands Sea View. Five minutes' walk from the Railway Station. Complete Accommodation for Families and Travellers. Hot and cold shower baths. Best Brands of Ales, Wines, and Spirits. Terms: 4s 6d per diem, or 25s per week. Letters and telegrams promptly replied to.



ROYAL HOTEL, WAIMATE

G. W. HENDERSON Proprietor.

THE COMMERCIAL HOTEL.

First-class Accommodation for the Travelling Public. Commercial, and Tourist. Large Sample Rooms. Superior Billiard Room. Private Rooms. Hot, Cold, and Shower Baths. Good Stabling. Loose Boxes.

CANTERBURY.—Cont.

Where to Stay in Christchurch?

STOREY'S FAMILY HOTEL

(Late Terminus).

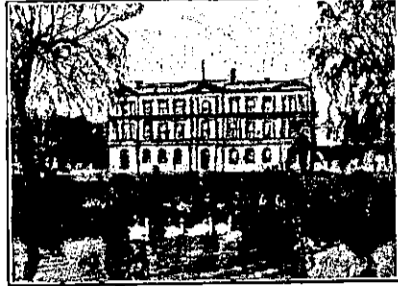
Right Opposite Railway Station.

Convenient to all parts of city and suburbs, as Electric Cars start from the door.

Excellent Cuisine.

Tariff on application

Proprietor F. W. MILLWARD.

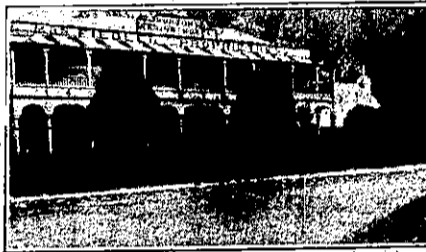


THE NEW CLARENDON HOTEL, CHRISTCHURCH.

CORNER OF OXFORD TERRACE AND WORCESTER-STREET (One Minute's Walk from General Post Office).

Recently Re-built. Superior Accommodation for Tourists and Travellers. All Modern Conveniences. Splendidly Situated.

D. COLLINS .. Proprietor.



MARINE HOTEL, SUMNER.

An Ideal Holiday Resort, offering excellent Accommodation for the Travelling Public.

BEST BRANDS OF WINES AND SPIRITS. HOT, COLD, AND SHOWER BATHS. BILLIARD TABLE.

MRS. A. FIELDER .. Proprietress.

THE GLADSTONE HOTEL,

Off Papanui Road, CHRISTCHURCH.

AN UP-TO-DATE HOUSE.

Excellent Accommodation. Liquors of Special Quality and Great Variety. Manning's Ales on Draught.

H. PIPER .. Proprietor.

MELVILLE HOTEL, TIMARU.

Beautifully situated, facing Caroline Bay (the favourite seaside resort). MR. E. TASKER (late of Winchester) has taken over the above, which has been renovated and refurnished throughout, and now offers excellent Accommodation to the travelling public. The Ales, Wines, and Spirits are the best procurable, and there is good stabling.

E. TASKER .. Proprietor.

WALLINGFORD HOTEL, TEMUKA.

J. REILLY (late of Criterion Hotel, Timaru).

First-class Accommodation for Travellers and Boarders. Baths, Hot, Cold, and Shower. Best Brands of Wines, Spirits and Ales. Good Billiard Room. Free Stabling.

One minute's walk and first house from Railway Station.

OTAGO PROVINCE.

RAILWAY HOTEL, MIDDLEMARCH.

MRS. A. A. WEBB Proprietress.

Superior Accommodation for Visitors and Boarders. All the Comforts of a Home. Wines, Spirits and Ales of the Best Brands. Charges Strictly Moderate. Meals at the arrival of Trains. Large Roomy Stable and Loose Boxes. Public Hall, suitable for Concerts, Balls, etc. Theatrical Companies liberally dealt with.

EUROPEAN HOTEL, GEORGE-STREET, DUNEDIN.

Good Accommodation for Travelling Public. Best Brands of Wines and Spirits Kept.

J. MORRISON Proprietor. (Late Ranfurly, Central Otago).

GLADSTONE HOTEL, MACLAGGAN-STREET, DUNEDIN.

JOHN COLLINS .. Proprietor. (Late of Al Hotel, Pelichet Bay).

The most Centrally-situated Hotel in the City. First-class Accommodation for Tourists Travellers, and Boarders. Suites of rooms for Families. Charges Moderate. A Special Feature: 1s Lunch from 12 to 2 o'clock. Hot, Cold, and Shower Baths. The Very Best of Wines, Ales, and Spirits supplied.

Printed and Published by ARTHUR CLAVE & CO., LTD., at their registered printing office, Vulcan Lane, Auckland.

OTAGO.—Cont.

BOWLING GREEN HOTEL.

Corner of Frederick and Cumberland streets, DUNEDIN.

W. D. Wyatt, late of Wellington, begs to inform his Friends and Country Visitors that he has taken the above well-known Hotel, which has been thoroughly Renovated and Refurnished, and is now in a position to offer his Patrons First-class Accommodation.

TERMS MODERATE. NOTED HOUSE FOR BEST WINES AND SPIRITS.

NELSON PROVINCE.

MASONIC HOTEL, NELSON.

CHANGE OF OWNERSHIP.

This long-established Hotel, which has always been the Headquarters in Nelson for Tourists and Commercial Travellers, has recently been purchased by Mr. H. Balgent.

The Hotel has been thoroughly Renovated, and all the Rooms are being refitted in modern style. No effort will be spared to make all visitors thoroughly comfortable.

BUSH TAVERN, GROVE-STREET, NELSON.

One of the oldest established Houses in Nelson, offering Good Accommodation.

Best Brands of Ales, Wines, and Spirits.

W. J. ARNOLD Proprietor.

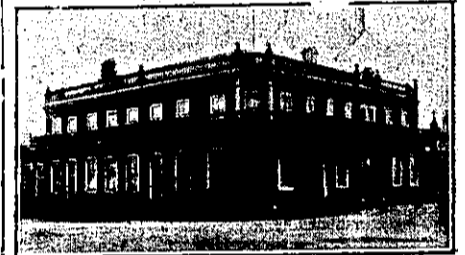
MARLBOROUGH PROVINCE.

MASONIC HOTEL, BLENHEIM.

Is Central, Popular, and Convenient, does a Commercial Business; has Splendid Appointments; Hot and Cold Baths; one of Alcock's Match Tables; and is the House selected by the N.Z.C.T. Club. Moderate Tariff.

J. PENNEY .. Proprietor.

WESTLAND PROVINCE.



GRAND HOTEL,

PALMERSTON-STREET

WESTPORT.

DAVID LEECH Proprietor.

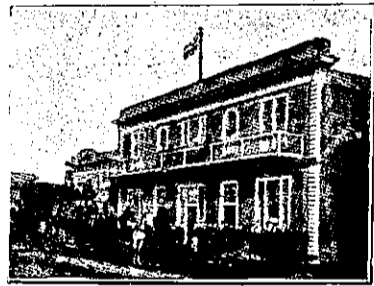
GLADSTONE HOTEL, REEFTON.

This Hotel, having been thoroughly Renovated and Re-furnished throughout, now offers Superior Accommodation at a moderate tariff.

Best Brands of Wines, Spirits, Ales, etc.

TARIFF: 4s 6d PER DIEM.

R. DUNPHY Proprietor.



EMPIRE HOTEL, WESTPORT.

H. McMASTER .. Proprietor. (Late Chief Steward White Star Line and N.Z. Shipping Company).

Recently Re-furnished and Renovated throughout. This Hotel will be found to offer every Modern convenience to Commercial Travellers and Visitors. Night Porter kept. Cuisine a Speciality. Two Alcock's Billiard Tables. Six Sample Rooms. Good Stabling. Speight's Beer always on Draught.

COMMERCIAL HOTEL, REVELL-STREET, HOKITIKA.

THOS. PALMER .. Proprietor. (Late Cameron's Hotel).

This Hotel is situated next to Cameron's Stables, and has been renovated throughout, and has every convenience for Travellers, Tourists, and the General Public. Hot and Cold Water Baths. Visitors will receive a hearty welcome. Only the Very Best of Wines, Spirits, and Ales kept. Board and Lodging, Moderate Charge; Permanent Boarders by arrangement.

OCCIDENTAL HOTEL, WHARF ST., HOKITIKA.

Centrally and conveniently situated, offering the best accommodation at a moderate tariff. Wines, Spirits, Ales, etc., of the best quality procurable. Cuisine excellent, under the personal supervision of Mrs. Woolhouse.

Tariff, 6s per diem; 1s 1s per week. Mrs. N. W. WOOLHOUSE, Proprietress.

Printed and Published by ARTHUR CLAVE & CO., LTD., at their registered printing office, Vulcan Lane, Auckland.