

WELLINGTON.—Continued.



PROVINCIAL HOTEL, WANGANUI. FIRST-CLASS ACCOMMODATION FOR THE TRAVELLING PUBLIC. ONLY THE BEST OF ALES, WINES, AND SPIRITS KEPT IN STOCK.

W. TUCK ..... Proprietor.

FOXTON FAMILY HOTEL, FOXTON.

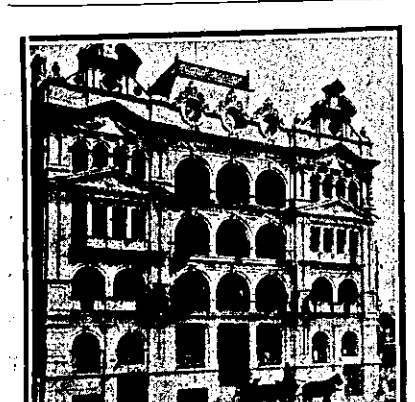
Excellent Accommodation for the Travelling Public at a Moderate Tariff. Best Wines, Spirits, Ales, etc. Good Billiard Table. Ample Stabling and Paddockings. Coaches run twice daily to Shannon.

ANDREW LAING (late of Dannevirke) Proprietor.

CLUB HOTEL, MARTON.

R. J. WALTERS ..... Proprietor.

First-class Accommodation for Visitors and the Travelling Public. Only the Best Brands of Ales, Wines and Spirits kept. First-class Billiard Room.



HOTEL ARCADIA, WELLINGTON.

Most Up-to-date Private Hotel in the Colonies. Smoking Rooms, Writing Rooms, Drawing Rooms and Lounge. Beautiful Roof Garden, reached by electric lift. JOHN PATERSON .. Proprietor (For 20 Years with U.S.S. Co.).

CALEDONIAN HOTEL (opposite Basin Reserve, Wellington).

Trams pass the Hotel every few minutes. One of the best-built Hotels in the Wellington District. First-class Table kept and Reasonable Tariff. Best Brands of Wines and Spirits Stocked. Only Speight's Best Draught Ales on Tap.

J. CLULOW ..... Proprietor. (Late of Railway Hotel, Lower Hutt). Footballers, Cricketers, and Athletes specially catered for.



CENTRAL HOTEL, MASTERTON.

MR. F. S. COOPER, late of the Empire Hotel, Hawera, and formerly of Wellington, wishes to inform the Travelling Public that he has taken over the above well-known house. This hotel offers superior accommodation to travellers, and is a First-class Family Residence in every respect. The rooms are well ventilated, lofty, and comfortably furnished. Good Table, Best of Wines, Ales, etc. Telegrams and Letters will receive prompt attention.

F. S. COOPER ..... Proprietor.

ZEALANDIA PRIVATE HOTEL, CAMBRIDGE TER., WELLINGTON. (Opp. Clyde Quay School). Tel. 1656.

First-class Accommodation for Boarders and the Travelling Public.

GOOD TABLE. MODERATE TARIFF. Baths: Hot, Cold and Shower. Trams to all parts of Town and Suburbs at corner.

This New and Commodious Building comprises 45 Rooms, and its Accommodation is equal to any in Wellington.

MRS. E. BUSHETT ..... Proprietress.

WELLINGTON.—Continued.

MASONIC HOTEL.

CUBA-STREET, WELLINGTON.

M. J. (TED) DONNELLY Proprietor.

THIS HOTEL is now thoroughly complete, and is

ONE OF THE BEST APPOINTED HOUSES IN THE CITY.

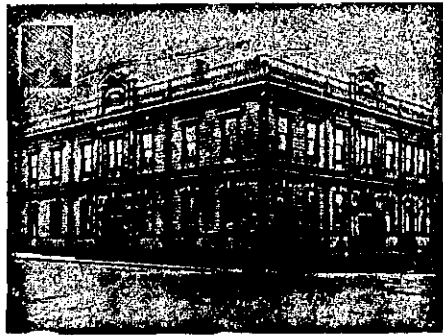
Every Room Electrically Lighted, and Newly Furnished.

Letters and Telegrams punctually attended to.

Only the Choicest Brands of Wines, Spirits, etc., Stocked.

LIBERAL CUISINE. TERMS MODERATE.

NIGHT PORTER IN ATTENDANCE.



METROPOLITAN HOTEL, WANGANUI.

P. McILVRIDE .... Proprietor. This Commodious and well-furnished Family and Commercial Hotel is only a half-minute's walk from the Railway Station and Wharves. The Cuisine is in charge of an Experienced Chef. Visitors may rely on receiving every attention. Night Porter. Best of Wines, Spirits, etc. P.O. Box 138. Phone 84. Tariff, 6s; weekly by arrangement.

CENTRAL HOTEL, WELLINGTON.

(Two Min. walk from Queen's Wharf. A. M. GOW (late of Dunedin) Proprietor.

ONLY BEST BRANDS OF LIQUOR KEPT.

MODERATE CHARGES.

THE COMMERCIAL HOTEL, PALMERSTON NORTH.

T. CHILDS ..... Proprietor. The proprietor of this conveniently-situated Hotel having had the premises entirely renovated and remodelled, is prepared to receive travellers and the public generally, and guarantees strict attention, the best of Wines and Spirits, and trusts to obtain by these means a fair share of patronage.

WAITOTARA HOTEL, WAITOTARA.

Has been brought thoroughly Up-to-date and offers First-class Accommodation to Travellers.

Best of Wines and Spirits. Speight's XXX Ales always on Tap.

GEO. McARTHUR ..... Proprietor. (Late of Wellington).

EMPIRE HOTEL AND LIVERY STABLES, FEATHERSTON.

The EMPIRE is the appointed Hotel to the Wellington Commercial Travellers' Association and N.Z. Cyclists' Touring Club.

JOHN CARD ..... Proprietor.

PRINCESS THEATRE HOTEL, TORY-STREET, WELLINGTON.

First-class Accommodation at a Moderate Tariff.

Every Attention and all Home Comforts.

Wines, Spirits, Ales, etc., of the Best Quality.

W. NIDD .. Proprietor.



ALBION HOTEL, WANGANUI. (Opposite the Courthouse and Public Library).

PETER HARTSHORN Desires to intimate to friends and the public generally that he has had the premises thoroughly renovated and refurnished throughout. The Best Wines and Spirits stocked. Speight's and Swan's Ales always on tap. Cuisine a Specialty. Luncheon from 12 to 2 o'clock. Excellent Accommodation for Boarders. Every convenience. Telephone. PETER HARTSHORN .... Proprietor.

WELLINGTON.—Continued.



NEW CRITERION HOTEL.

RIDGWAY-STREET, WANGANUI. One Minute from P.O. and Railway Station.

FIRST-CLASS ACCOMMODATION. EXCELLENT CUISINE. DINNER, 12 TO 2.

Tariff, 6s per Day. Phone, 225. P.O. Box 147. T. H. NIXON ..... Proprietor.

RAILWAY HOTEL (Opp. Railway Station), MARTON JUNCTION.

W. CLARKE..... Proprietor.

All trains stop sufficient time at station to enable passengers to obtain refreshments.

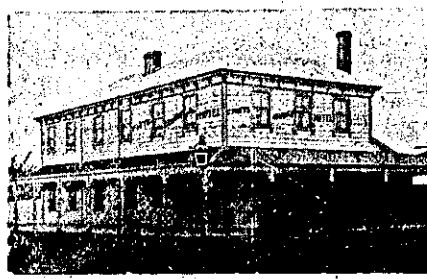
Good accommodation for the travelling public; also good stabling.

HOTELS FOR SALE.—Suburban Hotel, 9 years' lease; rent, £2 weekly. Price, £2800. First-class Hotel, Palmerston North; 8½ years' lease; low rental. Price reasonable. Hotel (Wairarapa), 4 years' lease; rental, £9; a bargain. Hotel (countr. near Wellington), about 3 years' lease. Price, £1800. Hotel (Forty-mile Bush), 14 rooms; 23 acres of land. Price, £1600. For Sale—Hotel (South), 2½ years' lease; rent, £2 15s per week. Price, £1000. Hotel (Taranaki), 4½ years' lease; rent, £5 8s per week; trade averages £80 to £90 weekly; progressive district. Price, £2200. Compact Hotel (Manawatu), over 5½ years' lease; rent, £4 per week. Price, £2250. Accommodation House and 690 acres; 21 years' lease; 250 sheep, 13 head cattle, pigs, etc. Price, £400. License fee, £1 per year. Hotel (seaport), 5 years' lease; rent, £4 per week. Price, £2200. Hotel and Store (West Coast), lease, 21 years, with right of further 21 years. Turnover, £6000 to £7000 yearly. Price, £1350. Magnificent Brick Hotel, leading thoroughfare Wellington; trade over £200 weekly. Elegantly furnished. Price, £7700. Suitable purchasers assisted with a large proportion of the purchase money. DWAN BROS., Willis-st, Wellington.

TARANAKI PROVINCE.

THE NEW "TROCADERO" TEMPERANCE HOTEL, EGMONT-STREET, NEW PLYMOUTH.

(One Minute from Railway Station). Every convenience provided for the Travelling Public. Meals, 1s; Beds, 1s 6d. Meals served on arrival of trains and steamers. New Building with brick walls. Complete fire escapes. Commodious and airy bedrooms and sitting-rooms. Hot, cold, and shower baths. Terms: From 4s 6d per day; weekly as per arrangement. HALE & CO., Proprietors.



A COMFORTABLE HOSTELRY.

CHARLES POTTS Begs to intimate that he has entered into possession of the

BRANCH HOTEL, BRIDGE-ST. ELTHAM.

Wines, Spirits and Liqueurs of the choicest quality. The Cuisine is under the management of an Experienced Chef. Hot Lunch Daily from 12.30. Saturday and Sale Days from 12. Tariff, 5s Per Day.

INGLEWOOD COFFEE PALACE (2 Min. from Railway Station).

F. C. BENNETT .. Proprietor.

36 Bedrooms, Commercial, Smoking, and Sitting Rooms. Large Dining Hall, Hot and Cold Water Baths. Excellent Cuisine. Terms: 4s 6d Per Day. Boarders as per arrangement.

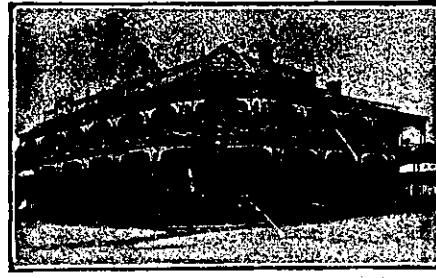
CLARENDON HOTEL, WAVERLEY.

MR. GEORGE OAKENFULL (Late of Waipawa),

Begs to inform the travelling public and residents of Waverley that he has taken over the Clarendon Hotel. He hopes that with strict attention to the comfort of his guests, a good table, and the best of Ales, Wines, Spirits, etc., to be favoured with their patronage.

When doing business with our Advertisers, kindly mention this paper.

TARANAKI.—Cont.



RED HOUSE HOTEL, DEVON-STREET, NEW PLYMOUTH.

EDWIN WHITTLE .. Proprietor.

Rebuilt and Refurnished, this well-known Hostelry now contains every comfort for guests. The liquors stocked are the Choicest to be bought in the Market. PAUL'S XXXX ALES ON DRAUGHT

COMMERCIAL HOTEL, WAVERLEY.

CHAS. A. HARRISON .. Proprietor.

First-class Accommodation for Travellers. Moderate Tariff. Wines, Spirits, Ales, etc. best quality procurable.

TARANAKI HOTEL, BROUGHAM-STREET, NEW PLYMOUTH.

H. J. JULIAN (late Railway Hotel, Inglewood), Proprietor.

All Wines and Spirits stocked of the Best Quality. Twenty-year-old Guaranteed Liqueur Whisky a Specialty. Paul's XXXX Ales.

BREAKWATER HOTEL, MOTUROA, NEW PLYMOUTH.

Situated three minutes' walk from the Wharf. Only the best of Ales, Wines and Spirits kept. Excellent Accommodation and Good Fishing. Telephone, 152.

TOMMY KNOWLES .. Proprietor.

EMPIRE HOTEL, HAWERA.

MRS. TODD begs to announce that she has purchased Mr. McLennan's interest in the above hotel, and that she intends to run it on up-to-date lines. The house is being thoroughly renovated, and patrons may rely upon getting comfortable rooms. Only the best wines and spirits are kept in stock. A first-class table. Tariff: 4s 6d a day. MRS. TODD (late of Railway Hotel, Palmerston), Proprietress

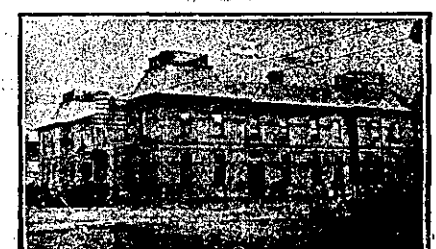
IMPERIAL HOTEL, DEVON-STREET, NEW PLYMOUTH.

JAMES SMITH ..... Proprietor.

This popular house of call is under entirely new Management and is one of the most Centrally Situated Hotels in New Plymouth. Guests may depend on being called to meet early trains, a porter being kept for that purpose.

Only Best Brand of Ales, Wines, and Spirits kept. Every possible convenience for the general and travelling public.

Terms, 6s 6d per day. Telephone 123. Box 83.



EGMONT HOTEL, HAWERA.

A. J. JURY ..... Proprietor.

The Proprietor (lately of the Okatawa Hotel, and formerly of the Shamrock), begs to inform his friends and the public generally that he has taken over the above popular Hotel, and trusts that, by strict attention to their comfort, and by keeping only the best of liquors, to retain their patronage.



COMMERCIAL HOTEL, NORMANBY.

FRED. W. BRUNETTE..... Proprietor.

The Proprietor begs to inform the public generally that he has taken over the above hotel, and by keeping the best of Liquors and Table hopes to merit a share of patronage. First-class accommodation paddocks. Stabling second to none.