

HAWKE'S BAY PROVINCE.



CRITERION HOTEL, NAPIER.

First-class Accommodation for Tourists, Families and Commercial Men.

S. CHARLTON Proprietor.

TARADALE HOTEL, TARADALE (NEAR NAPIER).

This Hotel just rebuilt and refurnished in modern style, offers excellent accommodation to the Travelling Public. Hot and Cold Baths. Liquors of the best brands procurable. Splendid and ample paddocking, stables and loose boxes.

A. FITZWILLIAM .. Proprietor.

E J WARREN

Formerly of the Havelock and Taradale Hotels),

HAS taken over the Albert Hotel, Hastings, which is now replete with every comfort and convenience, and he will be glad to see all friends, both new and old. First-class Accommodation for Boarders and Travellers. Terms Moderate. Luncheon 12 noon to 2 p.m. Robjohns' Prize Ale on draught. Ward's, Speight's and Manning's in bottle. Nothing but the Best Brands of Wines and Spirits stocked. Telephone No. 11.

RAILWAY HOTEL, HASTINGS.

PERCY MARTIN .. Proprietor.

First-class Accommodation to the Travelling Public.

Wines and Spirits of the Best Brands. First-class Billiard Rooms.

PACIFIC HOTEL

HASTINGS.

A. ELLINGHAM

(Late of Stortford Lodge Hotel),

Is now Proprietor of this well-known Hostelry. The Hotel has been refurnished throughout and made thoroughly up-to-date as a Family and Commercial Hotel.

Splendid Loose-box Accommodation for Visiting Trainers.

Telephone Communication between Napier and Hastings.

All Telegrams carefully attended to.

ALF. ELLINGHAM Proprietor.

ROYAL HOTEL,

CARLYLE-STREET, NAPIER

(Right opposite Recreation Ground).

GEO. H. GILDING Proprietor.

ANDREWS' HOTEL, DANNEVIRKE.

Patronised in London by H.M. King Edward VII.

The appointed House for the Commercial Travellers and Warehousemen's Association. Large Sample Rooms.

W. E. ANDREWS, Owner.

CLUB HOTEL, DANNEVIRKE.

J. HALLIGAN Proprietor.

This Well-known Establishment, which adjoins Dannevirke Railway Station, offers unsurpassed Accommodation to Travellers and the General Public.

ONLY BEST QUALITIES OF ALES, WINES, AND SPIRITS STOCKED.

TAVISTOCK HOTEL, WAIPUKURAU.

FIRST-CLASS ACCOMMODATION FOR VISITORS.

WINES AND SPIRITS OF THE BEST BRANDS.

Benzine and Naphtha stocked for the convenience of Motorists.

R. CONEYS Proprietor.

COMMERCIAL HOTEL, WAIPAWA.

Private Suites of Apartments and every Convenience for the Accommodation of the Public. WINES, SPIRITS and BEER OF THE BEST QUALITY ONLY.

A FIRST-CLASS BILLIARD TABLE. Good Stabling and Paddock Accommodation.

W. FELLOW .. Proprietor.

CANTERBURY PROVINCE.

CLUB HOTEL, TIMARU.

Close to Railway Station, and offering Excellent Accommodation to Travellers.

Liberal Cuisine. Hot and Cold Baths. Best Brands of Liquors Stocked. Moderate Tariff.

E. WARD .. Proprietor.

MASONIC HOTEL, CHRISTCHURCH.

VISITORS to above Hotel will find a Comfortable HOME, with Moderate Tariff.

EDWARD POWER (late Dunedin), Proprietor.



LYTTELTON HOTEL, LYTTELTON.

(Under new management). The above Hotel has been renovated throughout, and now offers Accommodation second to none in Lyttelton. Cuisine under the personal supervision of Mrs. Bunnell. Hot and Cold Water Baths. Best Brands of Ales, Wines, and Spirits. Excellent Billiard Table. Tariff Moderate.

J. E. BUNNELL (Late of Working Men's Club, Ashburton), Proprietor.

Where to Stay in Christchurch?

STOREY'S TERMINUS HOTEL,

(Opp. Christchurch Railway Station). Licensee .. F. W. MILLWARD.

Visitors to this spacious Hotel receive every possible attention and modern comfort. Letters and telegrams are promptly attended to. Telephone 795.

SPEIGHT'S PRIZE ALES ON DRAUGHT.

Special Arrangements made with Permanent Boarders and Theatrical Parties, etc.

Tariff—8s per Day. £2 2s per Week.

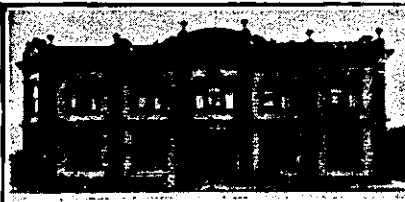
CAVE ROCK HOTEL, SUMNER.

(Under entirely new management). Beautifully situated, facing the sea, right opposite Cave Rock. The House has been thoroughly renovated throughout, and now offers Accommodation second to none. Best Brands of Wines, Ales, and Spirits. Crown XXX Ales on Draught. Good stabling. Trams stop at the door. Terms, 6s per diem, or 30s per week. Families and Permanent Boarders by arrangement.

H. L. THOMPSON .. Proprietor.

QUEEN'S HOTEL, TIMARU.

S. G. BRYAN .. Proprietor. Corner of Barnard and North Streets. Opposite Law Courts. Commands Sea View. Five minutes' walk from the Railway Station. Complete Accommodation for Families and Travellers. Hot and cold shower baths. Best Brands of Ales, Wines, and Spirits. Terms: 4s 6d per diem, or 25s per week. Letters and telegrams promptly replied to.



ROYAL HOTEL, WAIMATE

G. W. HENDERSON Proprietor.

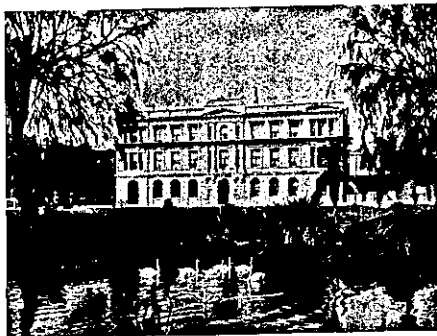
THE COMMERCIAL HOTEL.

First-class Accommodation for the Travelling Public, Commercial, and Tourists. Large Sample Rooms. Superior Billiard Room. Private Rooms. Hot, Cold, and Shower Baths. Good Stabling. Loose Boxes.

NOTICE.

When doing Business with our Advertisers, kindly mention this Paper

CANTERBURY.—Cont.

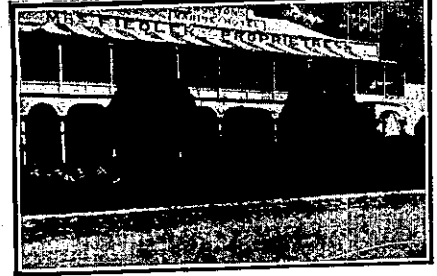


THE NEW CLARENDON HOTEL, CHRISTCHURCH.

CORNER OF OXFORD TERRACE AND WORCESTER-STREET (One Minute's Walk from General Post Office.

Recently Re-built. Superior Accommodation for Tourists and Travellers. All Modern Conveniences. Splendidly Situated.

D. COLLINS .. Proprietor.



MARINE HOTEL, SUMNER.

An Ideal Holiday Resort, offering excellent Accommodation for the Travelling Public.

BEST BRANDS OF WINES AND SPIRITS. HOT, COLD, AND SHOWER BATHS. BILLIARD TABLE.

MRS. A. FIELDER .. Proprietress.

THE GLADSTONE HOTEL,

Off Papanui Road, CHRISTCHURCH.

AN UP-TO-DATE HOUSE.

Excellent Accommodation. Liquors of Special Quality and Great Variety. Manning's Ales on Draught.

H. PIPER .. Proprietor.

MELVILLE HOTEL, TIMARU.—

Beautifully situated, facing Caroline Bay (the favourite seaside resort). MR. E. TASKER (late of Winchester) has taken over the above, which has been renovated and refurnished throughout, and now offers excellent Accommodation to the travelling public. The Ales, Wines, and Spirits are the best procurable, and there is good stabling.

E. TASKER .. Proprietor.

EXCELSIOR HOTEL (late Criterion), TIMARU.

Completely Re-built internally, and Re-furnished throughout. Special attention being given to ventilation, makes this one of the healthiest Hotels in New Zealand. Every room fire-proof.

Hot and Cold Baths.

Best of Wines and Spirits.

Speight's and Timaru Ale on Draught.

Terms: 7s 6d per Diem. Special arrangement by the week.

Telegraphic address: "Excelsior," Timaru.

Telephone 154.

RALPH PORTER .. Proprietor.

WALLINGFORD HOTEL, TEMUKA.

J. REILLY (late of Criterion Hotel, Timaru).

First-class Accommodation for Travellers and Boarders. Baths, Hot, Cold, and Shower. Best Brands of Wines, Spirits and Ales. Good Billiard Room. Free Stabling.

One minute's walk and first house from Railway Station.

OTAGO PROVINCE.

RAILWAY HOTEL, MIDDLEMARCH.

MRS. A. A. WEBB Proprietress.

Superior Accommodation for Visitors and Boarders. All the Comforts of a Home. Wines, Spirits and Ales of the Best Brands. Charges Strictly Moderate. Meals at the arrival of Trains. Large Roomy Stable and Loose Boxes. Public Hall, suitable for Concerts, Balls, etc. Theatrical Companies liberally dealt with.

EUROPEAN HOTEL, GEORGE-STREET, DUNEDIN.

Good Accommodation for Travelling Public. Best Brands of Wines and Spirits Kept.

J. MORRISON Proprietor.

(Late Ranfurly, Central Otago).

GLADSTONE HOTEL, MACLAGGAN-STREET, DUNEDIN.

JOHN COLLINS .. Proprietor. (Late of Al Hotel, Pellicet Bay).

The most Centrally-situated Hotel in the City. First-class Accommodation for Tourists Travellers, and Boarders. Suites of rooms for Families. Charges Moderate. A Special Feature: is Lunch from 12 to 2 o'clock. Hot, Cold, and Shower Baths. The Very Best of Wines, Ales, and Spirits supplied.

OTAGO.—Cont.

BOWLING GREEN HOTEL,

Corner of Frederick and Cumberland streets, DUNEDIN.

W. D. Wyatt, late of Wellington, begs to inform his Friends and Country Visitors that he has taken the above well-known Hotel, which has been thoroughly Renovated and Re-furnished, and is now in a position to offer his Patrons First-class Accommodation.

TERMS MODERATE. NOTED HOUSE FOR BEST WINES AND SPIRITS.

NELSON PROVINCE.

MASONIC HOTEL, NELSON.

CHANGE OF OWNERSHIP.

This long-established Hotel, which has always been the Headquarters in Nelson for Tourists and Commercial Travellers, has recently been purchased by Mr. H. Baigent.

The Hotel has been thoroughly Renovated, and all the Rooms are being Refitted in modern style. No effort will be spared to make all visitors thoroughly comfortable.

BUSH TAVERN, GROVE-STREET, NELSON.

One of the oldest established Houses in Nelson, offering Good Accommodation.

Best Brands of Ales, Wines, and Spirits.

W. J. ARNOLD.....Proprietor.

MARLBOROUGH PROVINCE.

MASONIC HOTEL, BLENHEIM

Is Central, Popular, and Convenient, does a Commercial Business; has Splendid Appointments; Hot and Cold Baths; one of Alcock's Match Tables; and is the House selected by the N.Z.C.T. Club. Moderate Tariff.

J. PENNEY .. Proprietor.

WESTLAND PROVINCE.



GRAND HOTEL,

PALMERSTON-STREET

WESTPORT.

DAVID LEECH Proprietor.

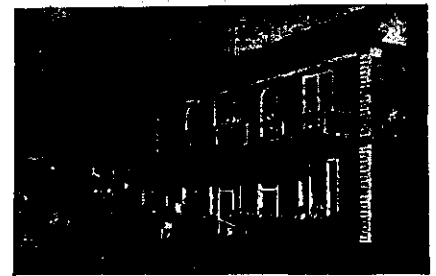
GLADSTONE HOTEL, REEFTON.

This Hotel, having been thoroughly Renovated and Re-furnished throughout, now offers Superior Accommodation at a moderate tariff.

Best Brands of Wines, Spirits, Ales, etc.

TARIFF: 4s 6d PER DIEM.

R. DUNPHY Proprietor.



EMPIRE HOTEL, WESTPORT.

H. McMASTER .. Proprietor.

(Late Chief Steward White Star Line and N.Z. Shipping Company).

Recently Re-furnished and Renovated throughout. This Hotel will be found to offer every Modern convenience to Commercial Travellers and Visitors. Night Porter kept. Cuisine a Speciality. Two Alcock's Billiard Tables. Six Sample Rooms. Good Stabling. Speight's Beer always on Draught.

COMMERCIAL HOTEL, REVELL-STREET, HOKITIKA.

THOS. PALMER .. Proprietor.

(Late Cameron's Hotel).

This Hotel is situated next to Cameron's Stables, and has been renovated throughout, and has every convenience for Travellers, Tourists, and the General Public. Hot and Cold Water Baths. Visitors will receive a hearty welcome. Only the Very Best of Wines, Spirits, and Ales kept. Board and Lodging, Moderate Charge; Permanent Boarders by arrangement.

OCCIDENTAL HOTEL, WHARF ST., HOKITIKA.

Centrally and conveniently situated, offering the best accommodation at a moderate tariff. Wines, Spirits, Ales, etc., of the best quality procurable. Cuisine excellent, under the personal supervision of Mrs. Woolhouse.

Tariff, 6s per diem; £1 1s per week.

Mrs. N. W. WOOLHOUSE, Proprietress.