

AUCKLAND PROVINCE.—Continued.

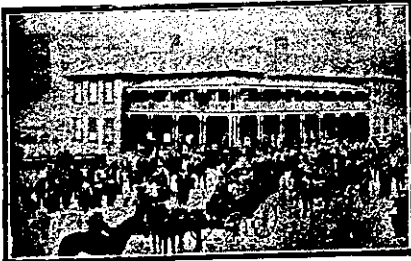


JUNCTION HOTEL, EPSOM.

Buses and trams pass here on their way to and from Ellerslie Racecourse and Alexandra Park Football Ground.

WINES, SPIRITS & BEERS—BEST ONLY.

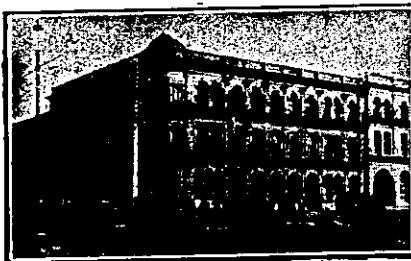
Give me a Call— J. COTTERALL Proprietor.



PALACE HOTEL.

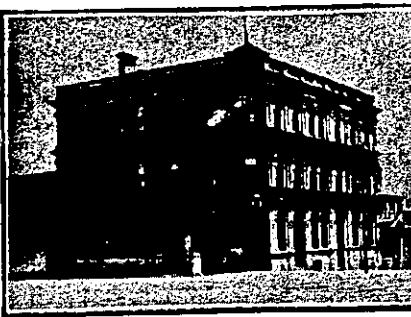
THE PREMIER HOTEL OF TE AROHA. FRANK PILLING Proprietor.

OFFERS SPECIAL ACCOMMODATION FOR TOURISTS, FAMILIES AND VISITORS. COMMERCIAL SAMPLE ROOM. TELEGRAMS PROMPTLY ATTENDED TO. SPACIOUS BEDROOMS. PRIVATE PARLOURS. HOT, COLD, AND SHOWER BATHS. TARIFF: 85s per Week, or 6s per Day. THE SPORTING HOTEL OF THE DISTRICT.



WAIEMATA HOTEL, Corner QUEEN AND CUSTOM STREETS, Auckland.

Close to the Wharf and Railway Station. VISITORS WILL FIND EVERY COMFORT AND CONVENIENCE. JOHN ENDEAN Proprietor. Telephone No. 589.



CITY HOTEL, CORNER OF VICTORIA AND HOBSON STS, AUCKLAND.

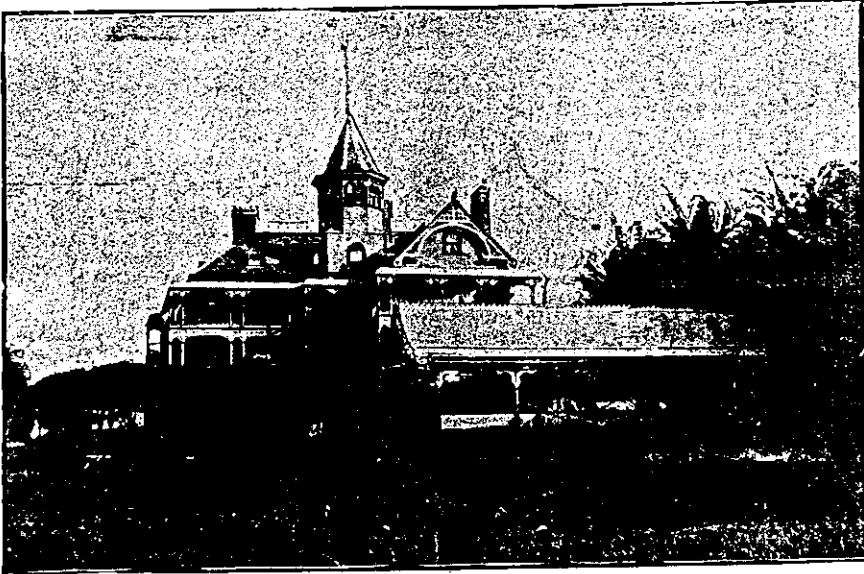
WALTER STIMPSON (Late of the Queen's Ferry) Will be glad to welcome old and New Friends at the above Popular House. The Wines, Spirits, Ales and Cuisine will be found to be unexceptionable, while the Accommodation is thoroughly modern.

MANUKAU HOTEL, ONEHUNGA WHARF, QUEEN-ST, ONEHUNGA.

This Hotel is directly situated on the Onehunga Wharf, and is therefore specially adapted for travellers either leaving or arriving from Wellington and the South via New Plymouth. Good accommodation and table. Only the best brands of liquor kept. Stabling, Boating and Fishing Parties arranged. T. MICHAELS Proprietor.

HUNTLY HOTEL, HUNTLY. L. B. HARRIS Proprietor.

This Hotel is now one of the largest in the Waikato. All trains stop at Huntly, and the Hotel is a few yards from the Station. First-class Accommodation and Excellent Table.



LAKE HOTEL, TAKAPUNA.

MR. H. S. BOOKER desires to intimate that he has taken over the above House, which has been re-painted and decorated throughout. Visitors will find every home comfort, whilst the position of the house and grounds is unequalled in the Colony. Terms have been fixed on the most moderate scale, and no effort will be spared to make visitors' stay most enjoyable. Fresh and Saltwater Bathing, Fishing, etc. Only One Hour's Journey from Auckland.

H. S. BOOKER Proprietor.



GROSVENOR HOTEL.

(Late Governor Browne),

HOBSON STREET, AUCKLAND.

WINES AND SPIRITS—Best Brands only. HOT AND COLD BATHS, BILLIARDS, Etc.

E. BULLER, Proprietor.

Tariff—5s per Day; 25s per Week.

Telephone No. 1153. Take College Hill car to Wyndham-street.

WELLINGTON PROVINCE.

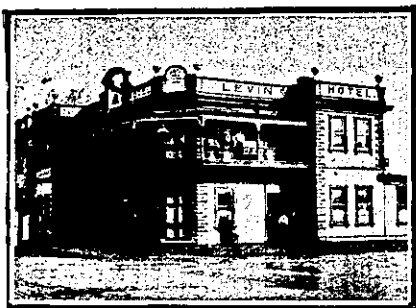
MASONIC HOTEL

RIVER BANK,

WANGANUI.

B. T. BENNETT,

PROPRIETOR.



LEVIN HOTEL. THE COMMERCIAL HOUSE.

Tariff, 6s Per Day. Recommended by its patrons. Best of Wines and Spirits and Speight's XXXX Ale.

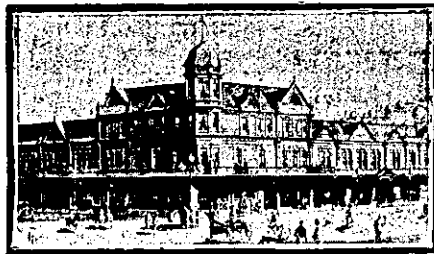
HUBERT S. COLLYNS Proprietor.

METROPOLITAN HOTEL.

MOLESWORTH-ST., WELLINGTON. MRS. JANE ORMSBEE Proprietress (Late of Clyde Quay Hotel, formerly of Central and Oriental Hotels).

FIRST-CLASS ACCOMMODATION FOR BOARDERS.

Close to Government and Manawatu Railway Stations. Telephone 1036. Trams stop at door.

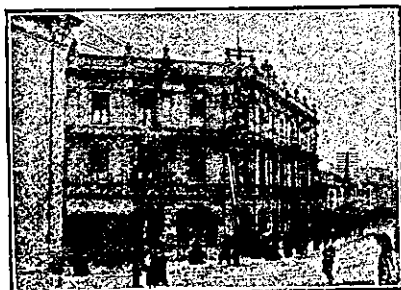


RUTLAND HOTEL, WANGANUI.

F. C. FABER Proprietor

THE HOME OF THE TOURIST.

The above hotel has just been rebuilt and newly furnished throughout in an up-to-date style. The reading, writing and smoke rooms are replete with every convenience. The greatest care is taken to maintain a reputation for home comfort. Dark room for photographers.



DUKE OF EDINBURGH HOTEL. WELLINGTON.

Having purchased the interest of Mrs Isaacs in the above well-known hostelry, I trust that by carefully studying the comfort of the travelling and general public, a continuance of former patronage will be extended to the present proprietor, who for many years has conducted well-known hotels in other parts of the province. This hotel offers superior accommodation to travellers, and is a first-class family house in every respect. Every attention and excellent meals, and only best meals, and only best drinks on tap. ROBERT HUNT (late of Marton), Proprietor.

WELLINGTON.—Cont.

THE EMPIRE HOTEL

(LIMITED).

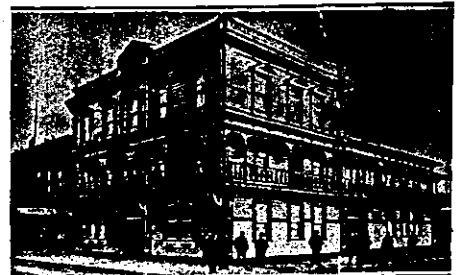
THE LEADING AND MOST CENTRAL HOTEL IN WELLINGTON.



BARRETT'S HOTEL, LAMBTON QUAY, WELLINGTON.

(Op. Bank of New Zealand). Newly Built in Brick. Over 70 Rooms. All Modern Conveniences. Close to Wharf and Post Office. Excellent Table kept. Day and Night Porters in attendance. Tariff 7s per day, weekly by arrangement. Letters and Telegrams receive prompt attention. Phone 1076.

W. M. KELLY Proprietor.



CENTRAL HOTEL, PALMERSTON NORTH.

The Central Hotel on Main-st. West in Palmerston is surely the best. The tables good, the bedrooms fine, with best of spirits, beer and wine; Fine sitting-rooms, baths hot and cold. And a welcome sure for young and old; So call on me when next you pass, And we'll enjoy a friendly glass.

A. F. ANDERSON Proprietor.

CLUB HOTEL, PALMERSTON NORTH.

H. B. TUCKER Proprietor.

This Hotel stands on about two acres of land, and includes a large garden and stables, twelve large, well-lighted and ventilated Sample Rooms. Telephone 29. P.O. Box 46.

UNDER THE IMMEDIATE SUPERVISION OF MR AND MRS. H. B. TUCKER.

POST OFFICE HOTEL, FOXTON.

THE LEADING HOTEL OF "FLAXOPOLIS." Coaches leave hotel for Shannon and Levin.

BEST OF WINES AND SPIRITS. SPEIGHT'S BEER.

GEO. GRAY Proprietor.

ASSY'S FAMILY HOTEL, LOWER HUTT

MR JOHN YOUNG begs to inform the Public that he has taken over the above. The Hotel has been thoroughly renovated, and now offers accommodation second to none in the district. Central position and close to the Gardens.

Excellent Table, and Best Brands of Wines, Spirits, Ales, etc. Good Stabling and Commodious Loose Boxes. JOHN YOUNG Proprietor

CLUB HOTEL, MASTERTON

The appointed house for the Commercial Travellers and Warehousemen's Association, Wellington, also, Cook's Tourist Travellers. All Appointments up-to-date. A. C. SCRIMGEOUR Proprietor.

THE NEW RAILWAY HOTEL, OPPOSITE RAILWAY STATION, PALMERSTON NORTH.

J. HURLEY Proprietor. Forty-five Rooms, 4 Bathrooms (hot and cold water), newly-furnished throughout. Up to date in every respect. First-class Table. Best Liquors only. Terms Moderate.