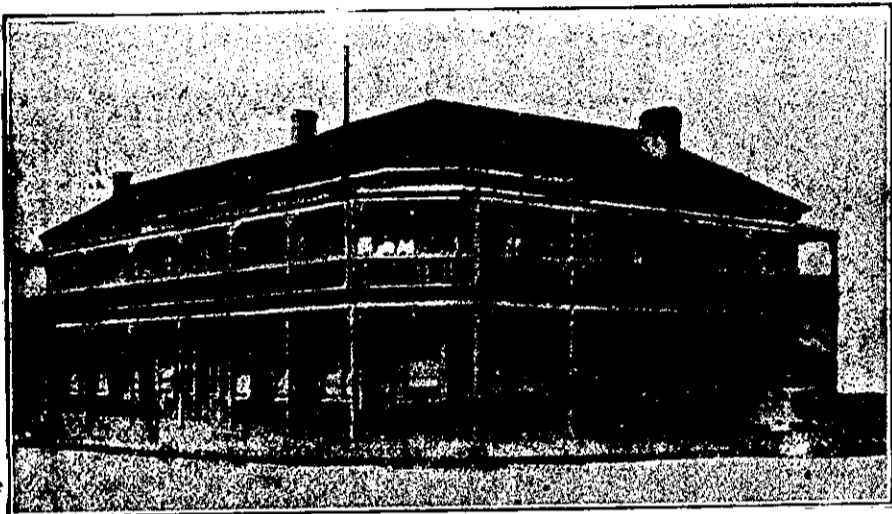


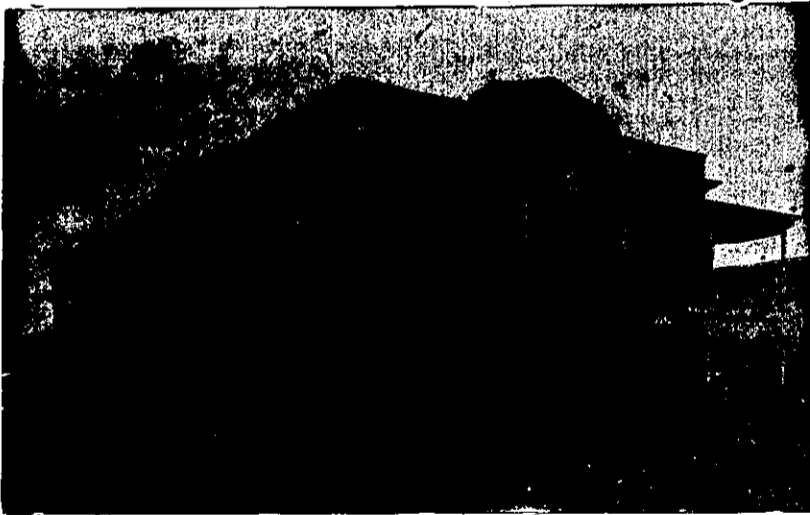
THE METROPOLITAN
Grand Central Coffee Palace
and Restaurant
 CORNER OF DEVON & EGMONT STREETS, NEW PLYMOUTH
 Within one minute's walk of Railway Station, Post Office and Banks.
 (Recognised as the Leading Unlicensed Hotel in Taranaki.)
 The above is specially adapted for the Convenience and Comfort of the
 Commercial and Social Travelling Public, and in every way equal to a First-
 class Hotel. Lofty and airy bedrooms, Ladies' Tea Rooms, Drawing-rooms,
 Spacious Dining-room, Commercial Room, Hot, Cold, and Shower Baths,
 Convenient and Commodious Sample Rooms.
 THE KITCHEN IS UNDER AN EXPERIENCED CHEF.
 TERMS: Per Day, 4/6;
 Per Week, 22/-.
ARROWSMITH, PROPRIETOR.



JUNCTION HOTEL, DANNEVIRKE.

CHAS. BADDELEY, Proprietor.
 (Late of the Railway Hotel).

First-class Accommodation. Best of Wines, Ales and Spirits. Hot Cold,
 and Shower Baths. First-class Billiard Table.
MODERATE TARIFF.



STAR GARTER HOTEL
 THE PREMIER HOUSE OF COROMANDEL.

Sample Room Free to all Commercial Travellers. Night Porter in attendance.
 Speight's Dunedin Beer always on Draught. All Communications promptly attended to
 Hot and Cold Baths.

GEORGE LORAM PROPRIETOR

McGavin & Co.'s Dunedin Ale

has, in a wonderfully short space of time, become the favourite drink of all
 connoisseurs, who declare it equal to the best English Ale. It is bright,
 sparkling, invigorating, and a wonderful appetiser.

McGavin & Co.'s Dunedin Stout

although only on the market a little time, it is competing successfully with
 other Brands, and on account of its superior quality as a tonic, is to be
 recommended for ladies and invalids.

In confidence, "Which is the Best Whisky in the Market?"

Daniel Crawford's !! Without a doubt!

SEEGNER LANGGUTH & CO., Agents for Auckland.

PROVINCIAL HOTEL, NAPIER.



This well-known Hotel is in close proximity to the Railway Station, thereby offering great facility to the travelling public of being able to leave by early trains. The Bedrooms are comfortably furnished, and the fittings and accommodation throughout are all that can be desired.
 Best Brands of Ales, Wines, and Spirits kept.

J. W. McDUFF, Proprietor.

D. MAHONEY,

**HOTEL BROKER AND LAND AGENT,
 STAFFORD STREET, TIMARU.**

Three years' lease, Hotels Temuka and Timaru. Freeholds of Hotels, Christchurch, Timaru, and Temuka, low price. Freehold of a splendid Country House, close to Timaru. Freehold of Gladstone Hotel, Fairlie; lease of Hotel, Christchurch; lease of Hotel, Lyttelton; lease of Hotel, Palmerston North; lease of First-class Boarding-house; also General Store and a Nice Fruit Shop, with Tea Rooms, in Timaru; the Freehold a Nice Country Hotel, with 10 acres land, near Christchurch, doing a good business.

**RAILWAY HOTEL (Opposite R.S.),
 INVERCARGILL.**

This Hotel is justly noted for its Superior Table, and its proximity to the Station makes it most convenient for Travellers in Invercargill. Splendidly furnished throughout, and equipped in every respect. Terms moderate. Telephone 273.

LOMAX & CO.,

LAND & ESTATE AGENTS,

PALMERSTON NORTH.

HOTELS from £250 to £17,000.

	Lease	Years	Rent	Takings Weekly.	Price.
Manawatu	5	5	5	60	2450
Hawke's Bay	3 1/2	7 1/2	70	2800	
Rangitikei	5	5	50	2500	
Hawke's Bay	4	3 1/2	35	800	
Wellington	6	5 1/2	55	2400	
Rangitikei	6 1/2	6	50	2200	
Hawera	9	3 1/2	60	2700	
Hawke's Bay	4	5	45	1700	
Oroua	2	3 1/2	45	850	
Matotuku	4	3	30	250	
Masterton	3	8	90	2100	
Manawatu	8	8	75	3500	
Wanganui	3	10	100	3800	
Shannon	5	4 1/2	70	2200	
Ashhurst	4	3	40	1200	
Eltham	5	7	100	2600	
Wanganui	7	6 1/2	45	1600	
Nelson	7	4 1/2	35	1500	

And about 50 good hotels to choose from, including Palmerston, Gisborne, Napier, Kaponga, and New Plymouth. Call and see our list in Main-street, next to Brophy and Mowlem, land agents.

WM. STRACHAN & CO.,

**VICTORIA BREWERY, DUNEDIN
 VICTORIA BREWERY, DUNEDIN**

Our ALES on TAP at Principal
 HOTELS throughout NEW
 ZEALAND.

BOTTLED ALES

And
STOUT.

**PRONOUNCED TO BE THE BEST IN
 THE MARKET.**

**WAIKATO BREWERY AND CRATED
 WATER MANUFACTORY.**

**Bottlers of WARD & CO.'S
 Champagne Ales**

**BEST DRAUGHT BEER, in 3, 5, and 10
 gallon Kegs, at 1/9 per gallon.**

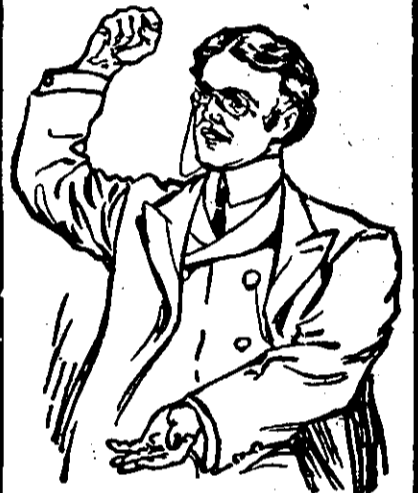
INVALID STOUT A SPECIALTY.

Orders by Letter or Telegram promptly attended to.

**G. L. INNES & CO.,
 HAMILTON**

**MEN WE TELL YOU
 THE LAW OF
 NATURE IS,**

INFRINGE HER LAWS, FOR DEATH PREPARE. DO NOT COMMIT THOSE ACTS WHICH CALL FOR PENALTY. If you suffer from youthful weakness and early indiscretion, call or write to the specialists of **The FREEMAN and WALLACE Electro-Medical Institute.** They can Advise and Cure you.



We Make No Experiments.
 We Have No Failures.
 Our Cures are Permanent.
 Our Fees are Fair and
 We Treat You Till Cured.

MEN 'Weakness'

Auctions of men, commonly described as "weakness," according to our observations, are not such, but depend upon reflex disturbances, and are almost invariably induced or maintained by appreciable damage to the prostate gland when occurring in robust subjects in every other respect, these forms of so-called weakness are very amenable to proper treatment.

Contracted Disorders.

From statistics compiled from our practice, covering over 7500 cases, we find that 90 per cent have recovered in seven days or less. This successful treatment prevents all complications, such as stricture, inflammation of the bladder and prostate gland, together with our extremely low fees, should induce all in need of treatment to consult us.

Note the Address—
The Freeman & Wallace
 Electro-Medical and Surgical Institute,
 Elizabeth & Bathurst Sts., Sydney.
 And at
 Howard Freeman, Director.
 DR. R. WALLACE, M.D., Physician-in-Chief.
 DR. ELIZABETH WHITE, M.D., Women and Children's Diseases.