

AUCKLAND RACING CLUB.

GREAT NORTHERN STEEPLECHASE MEETING, 1906.

JUNE 2, 4, AND 9.

President: Hon. E. Mitchelson. Vice-president: Mr. H. T. Gorrie. Stewards: Hon. Seymour Thorne-George, Mr. A. M. Myers, Mr. D. W. Duthie, Mr. W. C. Somers, Mr. F. Earl, Mr. G. W. S. Patterson, Mr. T. J. Sinclair, Mr. M. McLean. Committee: Hon. E. Mitchelson, Mr. S. Bradley, Mr. Richard Duder, Mr. H. T. Gorrie, Mr. A. Hanna, Mr. W. Davies, Mr. M. McLean, Mr. W. McLaughlin, Mr. N. A. Nathan, Mr. H. O. Nolan, Mr. G. W. S. Patterson, Mr. F. Earl. Judge: Mr. R. B. Lusk. Hon. Treasurer: Mr. H. T. Gorrie. Starter: Mr. C. O'Connor. Clerk of Scales: Mr. F. W. Marks. Clerk of Course: Mr. A. Selby. Auditors: Messrs. McCutcheon and Butler. Handicapper: Mr. J. O. Evelt. Secretary: Mr. J. F. Hartland.

FIRST DAY.

SATURDAY, JUNE 2nd, 1906

First race to start at 12 noon.

MAIDEN STEEPLECHASE (HANDICAP) of 100sovs; second horse to receive 10sovs out of the stake. For all horses that have never won a steeplechase of the value of 80sovs, or steeplechases of the collective value of 200sovs, at time of starting. Entrance 1sov, and acceptance 1sov each, to go to the funds. Winner of any steeplechase after declaration of weights to carry a 5lb penalty. About two miles and a-half.

MAIDEN WELTER HANDICAP of 100sovs; second horse to receive 10sovs out of the stake. Entrance 1sov, and acceptance 1sov each, to go to the funds. For all horses that have never won a flat race of the value of 80sovs, or flat races of the collective value of 200sovs at time of starting. Minimum weight, 9st. Winner of any flat race after the declaration of weights to carry a 5lb penalty. Seven furlongs.

GREAT NORTHERN HURDLE RACE (HANDICAP) of 450sovs; second horse to receive 50sovs, and third horse 20sovs out of the stake. Entrance 1sov, and acceptance 2sovs each at the post, to go to the funds. Over nine flights of hurdles. Winner of any hurdle race after the declaration of weights to carry a 5lb penalty. Two miles and a-quarter.

MAIDEN HURDLE RACE (HANDICAP) of 100sovs; second horse to receive 10sovs out of the stake. For all horses that have never won a hurdle race of the value of 80sovs, or hurdle races of the collective value of 200sovs at time of starting. Over seven flights of hurdles. Entrance 1sov and acceptance 1sov each, to go to the funds. Winner of any hurdle race after the declaration of weights to carry a 5lb penalty. One mile and three-quarters.

CORNWALL HANDICAP of 300sovs; second horse to receive 50sovs, and third horse 25sovs out of the stake. Entrance 1sov, and acceptance 2sovs each, to go to the funds. Minimum weight, 9st. Winner of any flat race after the declaration of weights to carry a 5lb penalty. Winner of Maiden Welter Handicap to carry not less than 10st. One mile.

PONY HANDICAP of 100sovs; second horse to receive 15sovs, and third horse 5sovs out of the stake. For three-year-olds and upwards. For horses 14 hands 3 inches and under. Entrance 1sov, and acceptance 1sov each, to go to the funds. Seven furlongs.

LADIES' BRACELET of 100sovs; a Bracelet of the value of 75sovs for the first horse, and a Bracelet of the value of 25sovs for the second horse. For horses that have never won a flat race of the value of 80sovs, or flat races of the collective value of 200sovs at time of starting. Three-year-olds, 10st 6lb; four-year-olds, 11st; five and six-year-olds, and aged, 11st 2lb. No other allowances. All horses to be nominated by ladies. Entrance 2sovs. Gentlemen riders. A trophy value 10sovs to the rider of the winner. One mile and a-half.

SECOND DAY.

MONDAY, JUNE 4, 1906.

First race to start at 12 noon.

ORAKEI HURDLE RACE (HANDICAP) of 100sovs; second horse to receive 10sovs out of the stake. Entrance 1sov, and acceptance 1sov each, to go to the funds. For all horses that have never won a hurdle race of the value of 50sovs, or hurdle races of the collective value of 150sovs at time of starting. Over seven flights of hurdles. One mile and three-quarters.

RANFURLY WELTER HANDICAP of 100sovs; second horse to receive 10sovs out of the stake. Entrance 1sov, and acceptance 1sov each, to go to the funds. For all horses that have never won a flat race of the value of 80sovs, or flat races of the collective value of 200sovs at time of starting. Minimum weight, 9st. One mile.

GREAT NORTHERN STEEPLECHASE (HANDICAP) of 700sovs; second horse to receive 100sovs, and third horse 50sovs out of the stake. Entrance 1sov, and acceptance 3sovs, with a final payment of 4sovs each at the post, to go to the funds. Winner of any steeplechase of the value of 150sovs after the declaration of weights to carry 5lb penalty. About three miles and a-half.

REMUERA HURDLE RACE (HANDICAP) of 175sovs; second horse to receive 25sovs, and third horse 10sovs out of the stake. Entrance 1sov, and acceptance 1sov each, to go to the funds. Over eight flights of hurdles. Winner of any hurdle race after the declaration of weights to carry a 5lb penalty. Two miles.

PRINCE OF WALES' HANDICAP of 300sovs; second horse to receive 50sovs, and third horse 25sovs out of the stake. Entrance 1sov, and acceptance 2sovs each, to go to the funds. Minimum weight, 9st. Winner of the Ranfurly Welter Handicap to carry not less than 10st. Seven furlongs.

TALLY-HO STEEPLECHASE (HANDICAP) of 100sovs; second horse to receive 10sovs out of the stake. Entrance 1sov, and acceptance 1sov each, to go to the funds. About three miles.

PONY WELTER HANDICAP of 100sovs; second horse to receive 15sovs, and third horse 5sovs out of the stake. For three-year-olds and upwards. For horses 14 hands 3 inches and under. Entrance 1sov, and acceptance 1sov each, to go to the funds. Minimum weight, 9st. Six furlongs.

THIRD DAY.

SATURDAY, JUNE 9, 1906.

First race to start at 12 noon.

TAMAKI STEEPLECHASE (HANDICAP) of 100sovs; second horse to receive 10sovs out of the stake. For all horses that have never won a steeplechase of the value of 80sovs, or steeplechases of the collective value of 200sovs at time of starting. Entrance 1sov, and acceptance 1sov each, to go to the funds. About two miles and a-half.

YORK WELTER HANDICAP of 250sovs; second horse to receive 40sovs, and third horse 10sovs out of the stake. Entrance 1sov, and acceptance 2sovs each, to go to the funds. Minimum weight, 9st. One mile.

WINTER STEEPLECHASE (HANDICAP) of 200sovs; second horse to receive 25sovs, and third horse 10sovs out of the stake. Entrance 1sov, and acceptance 2sovs each, to go to the funds. About three miles.

CAMPBELL HURDLE RACE (HANDICAP) of 175sovs; second horse to receive 25sovs, and third horse 10sovs out of the stake. Over seven flights of hurdles. Entrance 1sov, and acceptance 1sov each, to go to the funds. One mile and three-quarters.

FITZROY WELTER HANDICAP of 100sovs; second horse to receive 10sovs out of the stake. Entrance 1sov, and acceptance 1sov each, to go to the funds. For all horses that have never won a flat race of the value of 80sovs, or flat races of the collective value of 200sovs at time of starting. Minimum weight, 9st. Six furlongs.

FAREWELL HANDICAP of 100sovs; second horse to receive 10sovs out of the stake. Entrance 1sov, and acceptance 1sov each, to go to the funds. Minimum weight, 9st. Winner of any flat race after declaration of the weights to carry 7lb penalty. Five furlongs.

LADIES' BRACELET of 50sovs. A Bracelet of the value of 40sovs for the first horse, and a Bracelet of the value of 10sovs for the second horse. For horses that have never won a flat race of the value of 80sovs, or flat races of the collective value of 200sovs at time of starting. Three-year-olds, 10st 10lb; four-year-olds and upwards, 11st. No other allowances. All horses to be nominated by ladies. Winner of Ladies' Bracelet on first day to carry a penalty of 7lb. Entrance 1sov. Gentlemen riders. A trophy value 5sovs to the rider of the winner. One mile.

DATES OF NOMINATIONS, ACCEPTANCES, ETC., GREAT NORTHERN STEEPLECHASE MEETING, 1906, with amounts to be transmitted to Secretary A.R.C.

FRIDAY, APRIL 27, by 9 p.m.

NOMINATIONS.

Great Northern Hurdles Handicap, 1sov; Great Northern Steeplechase Handicap, 1sov; Winter Steeplechase Handicap, 1sov.

FRIDAY, MAY 18 (General Entry Night), by 9 p.m.

ACCEPTANCES.

Great Northern Hurdles Handicap, 2sovs; Great Northern Steeplechase Handicap, 3sovs.

NOMINATIONS.

Maiden Steeplechase Handicap, 1sov; Maiden Welter Handicap, 1sov; Maiden Hurdle Handicap, 1sov; Cornwall Handicap, 1sov; Pony Handicap, 1sov; Ladies' Bracelet, 2sovs; Orakei Hurdle Handicap, 1sov; Ranfurly Welter Handicap, 1sov; Prince of Wales' Handicap, 1sov; Tally-ho Steeplechase Handicap, 1sov; Tamaki Steeplechase Handicap, 1sov; York Welter Handicap, 1sov; Campbell Hurdle Handicap, 1sov; Fitzroy Welter Handicap, 1sov; Farewell Handicap, 1sov; Ladies' Bracelet, 1sov.

FRIDAY, MAY 25, by 9 p.m.

ACCEPTANCES.

Maiden Steeplechase Handicap, 1sov; Maiden Welter Handicap, 1sov; Maiden Hurdle Handicap, 1sov; Cornwall Handicap, 2sovs; Pony Handicap, 1sov.

SATURDAY, JUNE 2, at the post.

Great Northern Hurdles, 2sovs.

SATURDAY, JUNE 2, by 10 p.m.

ACCEPTANCES.

Orakei Hurdle Handicap, 1sov; Ranfurly Welter Handicap, 1sov; Remuera Hurdle Handicap, 1sov; Prince of Wales' Handicap, 2sovs; Tally-ho Steeplechase Handicap, 1sov; Pony Welter Handicap, 1sov.

MONDAY, JUNE 4, at the post.

Great Northern Steeplechase, 4sovs.

WEDNESDAY, JUNE 6, by 9 p.m.

ACCEPTANCES.

Tamaki Steeplechase Handicap, 1sov; York Welter Handicap, 2sovs; Winter Steeplechase Handicap, 2sovs; Campbell Hurdle Handicap, 1sov; Fitzroy Welter Handicap, 1sov; Farewell Handicap, 1sov.

DATES ON WHICH HANDICAPS APPEAR.

ON OR ABOUT MAY 11, 1906.

Great Northern Hurdles, Great Northern Steeplechase.

WEDNESDAY, MAY 23, in morning paper.

Maiden Steeplechase Handicap, Maiden Welter Handicap, Maiden Hurdle Handicap, Cornwall Handicap, Pony Handicap.

SATURDAY, JUNE 2, by 9 p.m.

Orakei Hurdles, Ranfurly Welter Handicap, Remuera Hurdles, Prince of Wales' Handicap, Tally-ho Steeplechase, Pony Welter Handicap.

WEDNESDAY, JUNE 6, in morning paper.

Tamaki Steeplechase, York Welter Handicap, Winter Steeplechase, Campbell Hurdle Handicap, Fitzroy Welter, Farewell Handicap.

J. F. HARTLAND,

Secretary.

WANGANUI JOCKEY CLUB.

WINTER MEETING, 1906.

THURSDAY AND FRIDAY, MAY 24 and 25.

Officers.—President: Dr. Earle. Vice-president: H. N. Harrison. Time-keeper: A. E. T. Nixon. Judge: W. H. Hartgill. Starter: C. H. Chavannes. Handicapper: George Morse. Clerk of the Scales: H. M. Speed. Clerk of the Course: Ronald Cameron. Stewards: President, Vice-president, and Treasurer (ex officio), and Messrs. E. A. Campbell, D. Campion, R. Grace, A. Higgle, James Higgle, G. Marshall, and Jas. Watt. Hon. Treasurer: J. H. Nixon.

FIRST DAY.

THURSDAY, 24th MAY, 1906.

1. 12 noon.—BOROUGH HANDICAP of 125sovs; second horse to receive 15sovs, and third horse 10sovs from the stakes. Distance, six furlongs. Nomination, 1sov; acceptance, 2sovs.

2. 12.45 p.m.—WANGANUI STEEPLECHASE HANDICAP of 300sovs; second horse to receive 40sovs, and the third horse to receive 10sovs from the stakes. Over the Wanganui Steeplechase course. Distance, about three miles. Nomination, 1sov; acceptance, 3sovs.

3. 1.30 p.m.—ELECTRIC HACK HANDICAP of 100sovs; second horse to receive 15sovs, and third horse 10sovs from the stakes. Distance, five furlongs. Nomination, 1sov; acceptance, 1sov.

4. 2.15 p.m.—MAY HURDLE HANDICAP of 125sovs; second horse to receive 15sovs, and third horse 10sovs from the stakes. Distance, about one mile and three-quarters. Over seven flights of hurdles, 3ft 6in in height. Nomination, 1sov; acceptance, 1sov.

5. 3 p.m.—KAITOKE HACK HURDLE HANDICAP of 100sovs; second horse to receive 15sovs, and third horse 10sovs from the stakes. About one mile and three-quarters. Over seven flights of hurdles 3ft 6in in height. Nomination, 1sov; acceptance, 1sov.

6. 3.45 p.m.—CONNOLLY HANDICAP of 250sovs; second horse to receive 40sovs, and the third horse 10sovs from the stakes. Distance, one mile and a distance. Nomination, 1sov; acceptance, 3sovs.

7. 4.30 p.m.—PURUA HACK FLAT HANDICAP of 100sovs; second horse to receive 15sovs, and third horse 10sovs from the stakes. Distance, one mile. Minimum weight, 7st. Nomination, 1sov; acceptance, 1sov.

SECOND DAY.

FRIDAY, 25th MAY, 1906.

1. 12 noon.—WINTER OATS HANDICAP of 150sovs; second horse to receive 20sovs, and third horse 10sovs from the stakes. Distance, one mile. Nomination, 1sov; acceptance, 2sovs.

2. 12.45 p.m.—GRANDSTAND STEEPLECHASE HANDICAP of 150sovs; second horse to receive 20sovs, and third horse 10sovs from the stakes. Distance, about two and a-half miles, over such a course as the stewards shall direct. Nomination, 1sov; acceptance, 2sovs.

3. 1.30 p.m.—BALGOWNIE HACK RACE HANDICAP of 100sovs; second horse to receive 15sovs, and third horse 10sovs from the stakes. Distance, one mile and a distance. Minimum weight, 7st. Nomination, 1sov; acceptance, 1sov.

4. 2.30 p.m.—CENTURY HURDLE HANDICAP of 250sovs; second horse to receive 35sovs, and third horse 15sovs from the stakes. About two miles and a distance. Over eight flights of hurdles 3ft 6in in height. Nomination, 1sov; acceptance, 3sovs.

5. 3 p.m.—RATA HACK HURDLE HANDICAP of 100sovs; second horse to receive 15sovs, and third horse 10sovs from the stakes. About one mile and five furlongs. Over six flights of hurdles, 3ft 6in in height. Nomination, 1sov; acceptance, 1sov.

6. 3.30 p.m.—FINAL STEEPLECHASE HANDICAP of 100sovs; second horse to receive 10sovs from the stakes. Distance, about two miles. Nomination, 1sov; acceptance, 1sov.

7. 4.15 p.m.—FAREWELL HACK FLAT HANDICAP of 100sovs; second horse to receive 15sovs; and third horse 10sovs from the stakes. Distance, six furlongs. Minimum weight, 7st. Nomination, 1sov; acceptance, 1sov.

PENALTIES.

Winner of any Steeplechase after declaration of weights to carry 10lb penalty in a Steeplechase, of any Hurdle Race to carry 7lb penalty in a Hurdle Race; and of any Flat Race to carry 7lb in any Flat Race.

DATES OF NOMINATIONS, WEIGHTS, AND ACCEPTANCES and amounts to be forwarded to Secretary, Wanganui Jockey Club.

FRIDAY, APRIL 27th, at 9 p.m.—NOMINATIONS—Borough Handicap, 1sov; Wanganui Steeplechase, 1sov;

Electric Hack Handicap, 1sov; May Hurdles Handicap, 1sov; Kaitoke Hack Hurdles, 1sov; Connolly Handicap, 1sov; Purua Hack Flat Handicap, 1sov; Winter Oats, 1sov; Grandstand Steeplechase, 1sov; Century Hurdles Handicap, 1sov; Balgownie Hack Flat, 1sov; Rata Hack Hurdles, 1sov; Final Steeplechase Handicap, 1sov; Farewell Hack Flat Handicap, 1sov.

SATURDAY, MAY 12th, 1906 (on or about)—

WEIGHTS for First Day's Races and Century Hurdles.

FRIDAY, MAY 18th, 1906, at 9 p.m. ACCEPTANCES—Borough Handicap, 2sovs; Wanganui Steeplechase, 3sovs; Electric Hack Handicap, 1sov; May Hurdle Handicap, 1sov; Connolly Handicap, 3sovs; Kaitoke Hack Hurdles, 1sov; Purua Hack Flat Handicap, 1sov; Century Hurdle Handicap, 3sovs.

THURSDAY, MAY 24th 1906 (at or about) 8 p.m.—

WEIGHTS—For Winter Oats Grandstand Steeplechase, Balgownie Hack Flat, Rata Hack Hurdles, Final Steeplechase and Farewell Hack Flat.

THURSDAY, MAY 24th, 1906, at 9 p.m. ACCEPTANCES—Winter Oats, 2sovs; Grandstand Steeplechase, 2sovs; Balgownie Hack Flat, 1sov; Rata Hack Hurdles, 1sov; Final Steeplechase, 1sov; Farewell Hack Flat, 1sov.

RULES AND REGULATIONS.

TO WHICH THE ATTENTION OF PERSONS ENTERING HORSES IS PARTICULARLY DIRECTED.

All Entries, Nominations, etc., will close at the Secretary's office, Wanganui, at 9 p.m., except when otherwise specified.

All Entries to be addressed to the Secretary, Wanganui Jockey Club, Wanganui, entrance money enclosed, with the name, age at the time of entry, name of owner, pedigree, colours of the rider, and in case of handicaps where horses have not previously started on the Wanganui course, performances of the horse. Entrance moneys go to the funds of the Club.

Entries by telegram must give full particulars of the horse, and must be confirmed in writing at the earliest possible opportunity, otherwise a fine of 1sov may be imposed.

Owners, Trainers and others entering and accepting horses for the W.J.C. Meetings are notified that no entries or acceptances will be received unless accompanied by the necessary amount in cash.

This notification does not apply to Owners and Trainers who have standing arrangements with the Executive.

Owners are responsible for all Penalties and Allowances.

All persons intending to withdraw horses are required to give notice to that effect to the Secretary one-half hour before the official time for starting the race. Any person neglecting or refusing to comply with this rule shall pay a fine, to be imposed by the Stewards, not exceeding 20sovs, to the Race Fund.

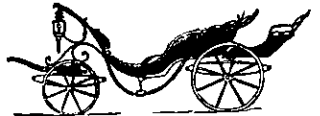
Stakes are paid in full.

All races to be run under the N.Z. Rule of Racing.

Prior to any race, the Stewards may order a parade in front of the stand. Any horse absent from such parade, without the permission of the Stewards, will be fined 2sovs.

No entry will be received under any pretence whatever after the hour named.

F. MOFFATT, Secretary.



KING'S LIVERY AND BAIT STABLES, STAFFORD-STREET, TIMARU.
THE LEADING STABLES IN SOUTH CANTERBURY.

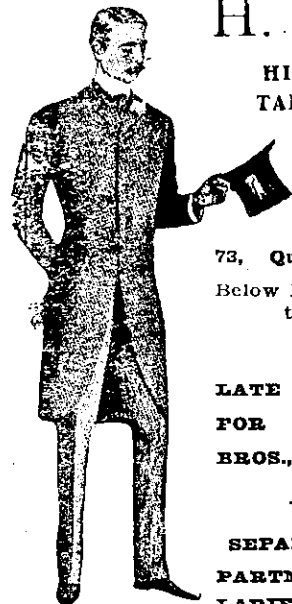
I beg to announce that I have the most up-to-date Plant in South Canterbury. Large Loose Boxes. Wedding and Picnic Parties supplied with First-class Turnouts. Attendance on hand Day and Night. My Landau and Expresses meet all Trains. Letters and Telegrams promptly attended to.

P.O. Box 105. Established 1861. Telephone 109.

JNO. D. KING Proprietor.

H. WRIGHT

HIGH-CLASS TAILOR.



Note Address:

73, Queen-street, Below H. M. Smeeton.

LATE CUTTER FOR McCOMBIE BROS., LONDON.

SEPARATE DEPARTMENT FOR LADIES.

READ "The New Zealand Farmers' Weekly." Price 3d. Of all Booksellers.