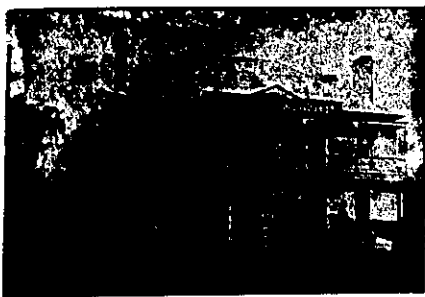


AUCKLAND PROVINCE—Continued.



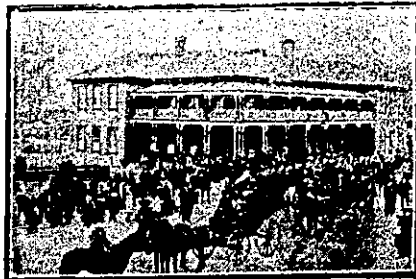
JUNCTION HOTEL, EPSOM.

Buses and trams pass here on their way to and from Ellerslie Racecourse and Alexandra Park Football Ground.

WINES, SPIRITS & BEERS—BEST ONLY.

Give me a Call—

J. COTTERALL Proprietor.



PALACE HOTEL.

THE PREMIER HOTEL OF TE AROHA.

FRANK PILLING Proprietor.

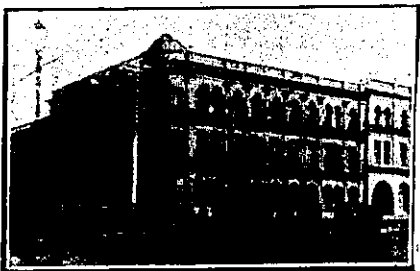
OFFERS SPECIAL ACCOMMODATION FOR TOURISTS, FAMILIES AND VISITORS.

COMMERCIAL SAMPLE ROOM. TELEGRAMS PROMPTLY ATTENDED TO. SPACIOUS BEDROOMS. PRIVATE PARLOURS.

HOT, COLD, AND SHOWER BATHS.

TARIFF: 35s per Week, or 6s per Day.

THE SPORTING HOTEL OF THE DISTRICT.

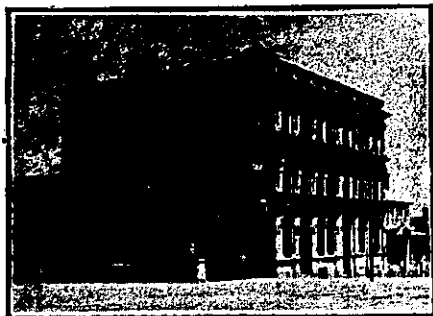


WAITEMATA HOTEL, Corner QUEEN AND CUSTOM STREETS, AUCKLAND.

Close to the Wharf and Railway Station.

VISITORS WILL FIND EVERY COMFORT AND CONVENIENCE

JOHN ENDEAN Proprietor. Telephone No. 589.



CITY HOTEL, CORNER OF VICTORIA AND HOBSON STS, AUCKLAND.

WALTER STIMPSON (Late of the Queen's Ferry)

Will be glad to welcome old and New Friends at the above Popular House. The Wines, Spirits, Ales and Cuisine will be found to be unexceptionable, while the Accommodation is thoroughly modern.

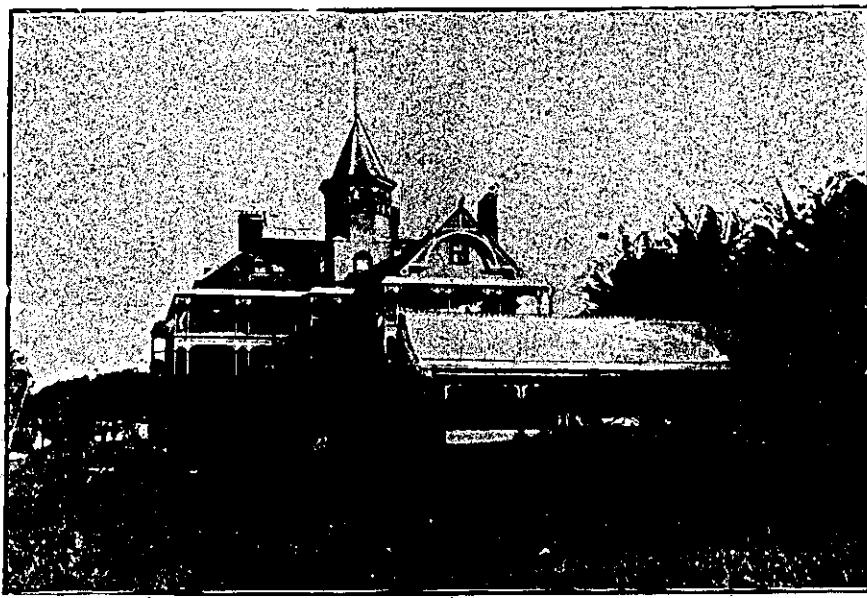
MANUKAU HOTEL, ONEHUNGA WHARF, QUEEN-ST., ONEHUNGA.

This Hotel is directly situated on the Onehunga Wharf, and is therefore specially adapted for travellers either leaving or arriving from Wellington and the South via New Plymouth. Good accommodation and table. Only the best brands of liquor kept. Stabling, Boating and Fishing Parties arranged. T. MICHAELS Proprietor.

HUNTLY HOTEL, HUNTLY.

L. B. HARRIS.....PROPRIETOR.

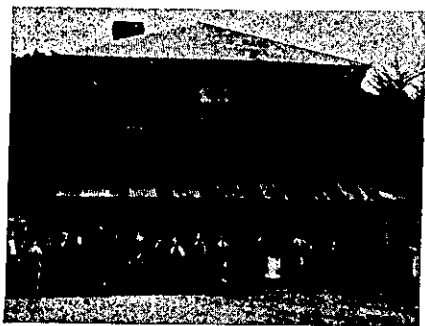
This Hotel is now one of the largest in the Waikato. All trains stop at Huntly, and the Hotel is a few yards from the Station. First-class Accommodation and Excellent Table.



LAKE HOTEL, TAKAPUNA.

MR. H. S. BOOKER desires to intimate that he has taken over the above House, which has been re-painted and decorated throughout. Visitors will find every home comfort, whilst the position of the house and grounds is unequalled in the Colony. Terms have been fixed on the most moderate scale, and no effort will be spared to make visitors' stay most enjoyable. Fresh and Saltwater Bathing, Fishing, etc. Only One Hour's Journey from Auckland.

H. S. BOOKER Proprietor.



TRAMWAY HOTEL, KARANGAHAKE Across the Bridge.

MR P. CROSBY Proprietor.

This is the best hotel in the district, is lighted up by electricity, and has the reputation of only keeping first-class ales and spirits. The table is excellent. Hot and Cold Baths always ready. Attached to the hotel is the well-known Lyceum Hall, which is also lighted up with electricity.

OWHARO A HOTEL, MAIN-STREET, WAIKINO.

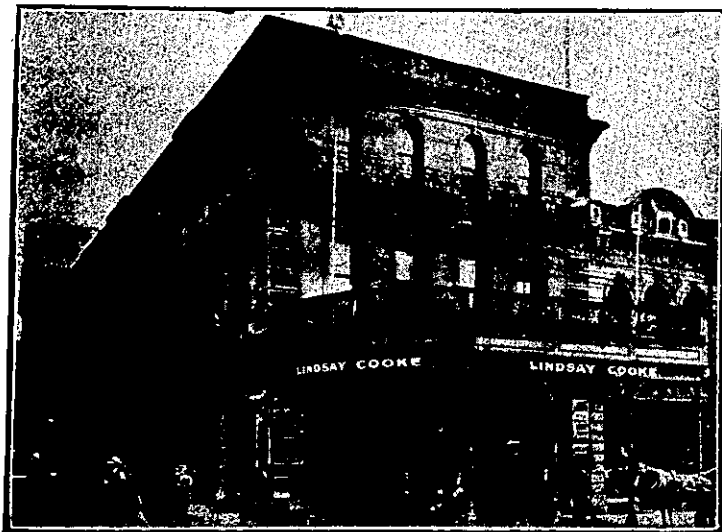
RALPH MONTGOMERY Proprietor.

RALPH MONTGOMERY (lately manager of the above Hotel) has taken it over on his own, and trusts to see all his old patrons. Extensive additions are now being made, and when complete the Hotel will be second to none in the district. Don't forget to call on RALPH MONTGOMERY.

S. W. BUCK, SUFFOLK HOTEL, PONSONBY, AUCKLAND.

Having taken possession of the above Hotel I shall be glad to see all my Old Friends and Customers. Wines and Spirits of the Best Brands only. Billiards.

S. W. BUCK Proprietor.



METROPOLITAN HOTEL, QUEEN STREET, AUCKLAND.

LINDSAY COOKE Proprietor.

The new proprietor has much pleasure in announcing that this popular House has been thoroughly renovated and re-furnished throughout and now offers accommodation equal to any other in the colony. Entirely New Stock of Wines, Spirits, and Ales have been laid down, and the Cuisine is Unexcelled.



STOCK PATTERNS.—Dozens of Matching Patterns in Tea and Dinner Ware to select from.

China & Glassware.

We hold the most up-to-date Stock of Lines required by Hotels, Clubs, Restaurants, Boarding Houses, etc. We quote Special Prices to the Trade.

We make a Speciality of Wedding Presents, New Epergnes, Pots and Pedestals, Vases, Ornaments. HIRE.—We hire, for special occasions, China, Glass, Cutlery, etc.

TANFIELD, POTTER & CO., RETAIL, 242 Queen St.

Wholesale Dept. Lorne St.



WELLINGTON PROVINCE.



DUKE OF EDINBURGH HOTEL, WELLINGTON.

Having purchased the interest of Mrs Isaacs in the above well-known hostelry, I trust that by carefully studying the comfort of the travelling and general public, a continuance of former patronage will be extended the present proprietor, who for many years has conducted well-known hotels in other parts of the province. This hotel offers superior accommodation to travellers, and is a first-class family house in every respect. Every attention and excellent meals, and only best meals, and only best drinks on tap.

ROBERT HUNT (late of Marton), Proprietor.

ALHAMBRA HOTEL, CUBA-STREET, WELLINGTON.

MR S. J. FLEWELLYN (late of the Clarendon, Christchurch), has taken over the above popular hostelry, which will be found thoroughly up-to-date. The bars are as bright and new as to be found anywhere and are stocked with the best liquors procurable.

S. J. FLEWELLYN ... Proprietor.

THE EMPIRE HOTEL (LIMITED).

THE LEADING AND MOST CENTRAL HOTEL IN WELLINGTON.

RAILWAY HOTEL, (Opp. Railway Station), MARTON JUNCTION.

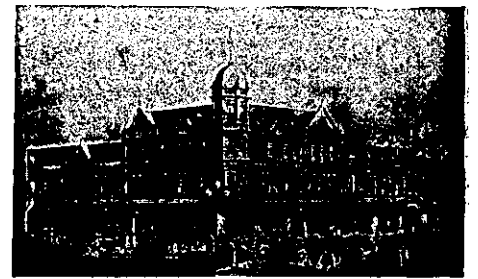
W. CLARKE.....Proprietor.

All trains stop sufficient time at station to enable passengers to obtain refreshments. Good accommodation for the travelling public; also good stabling.

BARRETT'S NEW HOTEL, LAMBTON QUAY, WELLINGTON.

THIS Hotel has just been completed and furnished throughout in the best style, making it a hostelry second to none in the colony. Its close proximity to the wharf, trains, and trams renders it an excellent and convenient Hotel for visitors and travellers to be accommodated. The general features of Barrett's New Hotel will be found to be thoroughly up-to-date in every way. Best of everything for permanent boarders, visitors, families, and the travelling public, at moderate rates. Nothing but the finest quality of Wines, Ales, and Spirits stocked. Civility and attention to all patrons.

J. J. KELLY Proprietor.



RUTLAND HOTEL, WANGANUI.

F. O. FABER ... Proprietor.

THE HOME OF THE TOURIST.

The above hotel has just been rebuilt and newly furnished throughout in an up-to-date style. The reading, writing and smoke rooms are replete with every convenience. The greatest care is taken to maintain a reputation for home comfort. Dark room for photographers.

CLASBY'S FAMILY HOTEL, LOWER HUTT

MR JOHN YOUNG begs to inform the Public that he has taken over the above. The Hotel has been thoroughly renovated, and now offers accommodation second to none in the district. Central position and close to the Gardens.

Excellent Table, and Best Brands of Wines, Spirits, Ales, etc.

Good Stabling and Commodious Loose Boxes.

OEN YOUNG.....Proprietor.

Patronised by His Excellency the Governor.

CLUB HOTEL, MASTERTON

The appointed house for the Commercial Travellers and Warehousemen's Association, Wellington, also Cook's Tourist Travellers. All Appointments up-to-date.

A. C. SCRIMGEOUR Proprietor.

THE NEW RAILWAY HOTEL, OPPOSITE RAILWAY STATION, PALMERSTON NORTH.

J. HURLEY PROPRIETOR.

Forty-five Rooms, 4 Bathrooms (hot and cold water), newly-furnished throughout. Up to date in every respect. First-class Table. Best Liquors only. Terms Moderate.