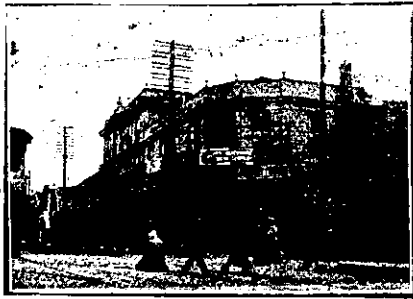


WELLINGTON—Continued.



ALBERT HOTEL, WELLINGTON.

MR D. P. BARRETT Has pleasure in intimating that he has taken over the proprietorship of this well-known Commercial and Family Hotel...

FOXTON FAMILY HOTEL, FOXTON

Excellent Accommodation for the Travelling Public at a Moderate Tariff. Best Win & Spirits, Ales, etc. Good Billiard Table...



PRIVATE HOTEL, WELLINGTON.

First-class Accommodation. Good Table. All Up-to-date conveniences. Terms Moderate. Tel. 1053.

CLUB HOTEL, MARTON.

First-class accommodation for visitors and the travelling public. Only the Best Brands of Ales, Wines and Spirits kept.

CLUB HOTEL, WELLINGTON.

LAMBTON QUAY, WELLINGTON.

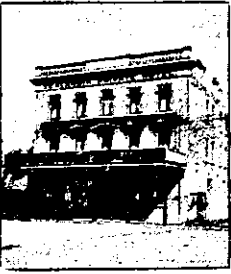
First-class accommodation at a moderate tariff. Every attention and all home comforts.

Wines, Spirits, Ales, etc., of the Best Quality.

E. SHERATT Proprietor.

ZEALANDIA PRIVATE HOTEL, WELLINGTON.

(Opp. Clyde Quay School). Tel. 1656.



First-class Accommodation for Boarders and the Travelling Public. GOOD TABLE. MODERATE TARIFF.

This New and Commodious Building comprises 45 Rooms, and its Accommodation is equal to any in Wellington.

COCKAYNE'S LEVIATHAN, MANCHESTER and ST. ASAPH STREETS, CHRISTCHURCH.

Visitors to Christchurch should secure accommodation at the Leviathan. It offers all the advantages of an up-to-date home...

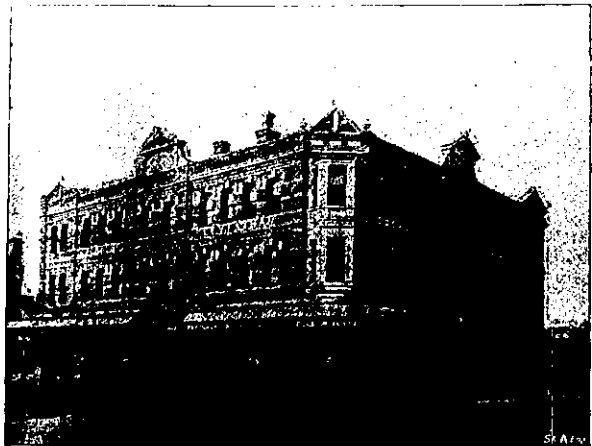
PRIVATE ROOMS FOR LADIES. Hot and Cold Baths, Fire Escapes, etc.

Within Five Minutes' Walk from Christchurch Railway Station.

TARIFF: 4/6 PER DIEM. 30/- PER WEEK.

Comfort, Cleanliness, and Civility Guaranteed. Letters and Telegrams Receive prompt attention.

TELEPHONE 747.



WELLINGTON—Continued.

DEVINE'S EMPIRE HOTEL, MAIN STREET, PALMERSTON NORTH.

Patrons can rely on being supplied with all leading brands of Whiskies, Wines, and Brandies. Special feature: First-class luncheon from 12 o'clock to 2 p.m. for One...

CALEDONIAN HOTEL, OPPOSITE BARRIS RESERVE, WELLINGTON.

Trams Pass the Hotel every few minutes. I beg to announce that the house, which has only lately been rebuilt and refurnished, is now open to the travelling public...

PRINCESS HOTEL, TERRACE END, PALMERSTON NORTH.

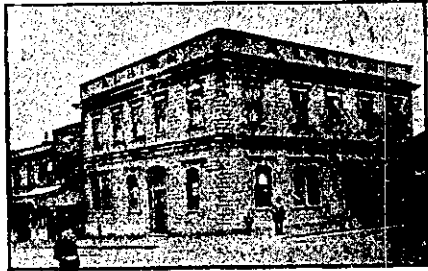
The travelling public can rely on being supplied with the best liquors, comfortable bedrooms, and first-class table. Finest Billiard Room and Table on the Coast.

GRAND NATIONAL HOTEL, PETONE, WELLINGTON.

MR JOHN PYKE (late of the Cambridge and Imperial Hotels, Wellington) begs to notify his friends and the public generally that he has taken over this old-established and popular hostelry...

THE NEW RAILWAY HOTEL, OPPOSITE RAILWAY STATION, PALMERSTON NORTH.

Forty-five Rooms, 4 Bathrooms (hot and cold water), newly-furnished throughout. Up to date in every respect. First-class Table. Best Liquors only.



ALBION HOTEL, WANGANUI.

Desires to intimate to friends and the public generally that he has had the premises thoroughly renovated and refurnished throughout. The Best Wines and Spirits stocked.



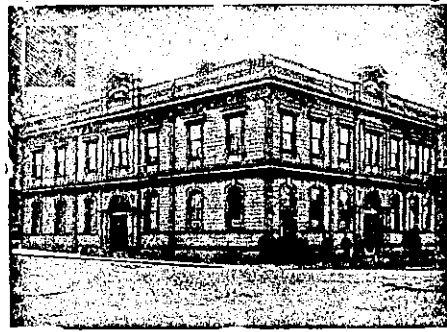
SIDDELES FEDERAL HOTEL, WANGANUI.

Opposite the Up-river Piers and Wharves and Boating-sheds. Three minutes' walk from Railway Station and Post Office.

RAILWAY HOTEL, (OPPOSITE RAILWAY STATION), MARTON JUNCTION.

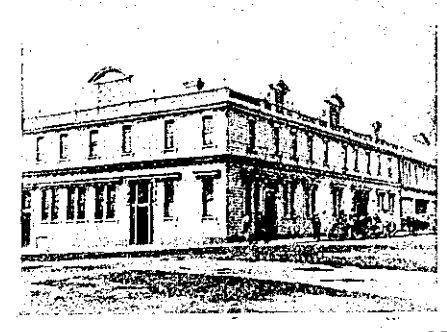
All trains stop sufficient time at station to enable passengers to obtain refreshments. Good accommodation for the travelling public; also good stabling.

WELLINGTON—Continued.



METROPOLITAN HOTEL, WANGANUI.

This commodious and well furnished family and commercial hotel is almost opposite railway station and town wharves. It has a lovely promenade roof which commands a splendid view of the town.



CRITERION HOTEL, WANGANUI.

This well-known hotel is in close proximity to the railway-station, thereby offering great facility to the travelling public of being able to leave by the early trains.



PROVINCIAL HOTEL, WANGANUI.

FIRST-CLASS ACCOMMODATION FOR THE TRAVELLING PUBLIC. ONLY THE BEST OF ALES, WINES, AND SPIRITS KEPT IN STOCK.

THE COMMERCIAL PRIVATE HOTEL, FEILDING.

Recently opened. Has been built in the most up-to-date style, and offers superior accommodation, together with the comforts of a home.

Excellent Cuisine. Hot, Cold, and Shower Baths. Moderate Tariff.

R. McFALRANE Proprietor.

THE COMMERCIAL HOTEL, PALMERSTON NORTH.

The Proprietor of this conveniently situated Hotel having had the premises entirely renovated and remodelled, is prepared to receive travellers and the public generally...

WELLINGTON—Continued.

WAIRARAPA HOUSE, 51, KENT TERRACE, WELLINGTON.

SITUATED in the quietest and healthiest part of Wellington, yet only a few minutes (per tram) to the heart of the city.

Lit up by electricity, hot and cold baths, smoking, reading, and ladies' sitting rooms, piano, lofty bedrooms, spacious dining room. First class table.

Trams stop at the door. Tariff from 4s per day. Special arrangements for Families and Permanent Boarders.

GEORGE COKER (Late of the Wairarapa), PROPRIETOR.

CENTRAL HOTEL, WELLINGTON.

(Two Minutes walk from Queen's Wharf). A. M. GOW (late of Dunedin) Proprietor. ONLY BEST BRANDS OF LIQUOR KEPT. MODERATE CHARGES.

TARANAKI PROVINCE.

IMPERIAL HOTEL, DEVON STREET, NEW PLYMOUTH.

JAMES SMITH Proprietor.

This popular house of call is under entirely new management, and is one of the most centrally situated hotels in New Plymouth. Guests may depend on being called to meet early trains, a porter being kept for that purpose.

Only Best Brands of Ales, Wines, and Spirits kept. Every possible convenience for the general and travelling public.

Terms, 6s 6d per day. TELEPHONE 123. Box 83.

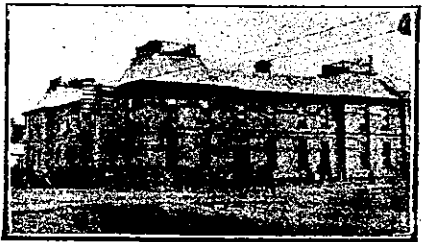


MASONIC HOTEL, WAITARA.

This hotel combines all the conveniences of first-class House, together with a moderate tariff.

Hot, Cold, and Shower Baths. Wines, Spirits, Ales, etc., of the Best Brand.

A. SMYTH Proprietor.



EGMONT HOTEL, HAWERA.

The Proprietor (late of the Okaiawa Hotel, and formerly of the Shamrock) begs to inform his friends and the public generally that he has taken over the above popular hotel, and by keeping only the best liquors, to retain their patronage.

Advertisement for THE METROPOLITAN Grand Central Coffee Palace and Restaurant, located at the corner of Devon & Egmont Streets, New Plymouth. Includes details about the proprietor, Arrowsmith, and the quality of the food and service.