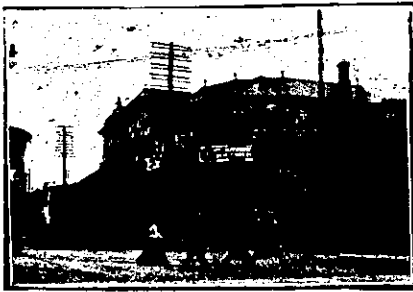


WELLINGTON—Continued.



ALBERT HOTEL, WELLINGTON.

MR D. P. BARRETT
Has pleasure in intimating that he has taken over the proprietorship of this well-known Commercial and Family Hotel, and trusts that his long experience in first-class hotel-keeping will add to the comfort of visitors.

FOXTON FAMILY HOTEL, FOXTON

Excellent Accommodation for the Travelling Public at Moderate Tariff.
Best Wines, Spirits, Ales, etc. Good Billiard Table
Ample Stabling and Paddockings.
Coaches run twice daily to Shannon.
ANDREW LAING (late of Dannevirke).....Proprietor



PRIVATE HOTEL, No 70, INGESTRE-STREET, WELLINGTON.

First-class Accommodation. Good Table. All Up-to-date conveniences. Terms Moderate. Tel. 1053.
JOSEPH ROSS ... Proprietor.

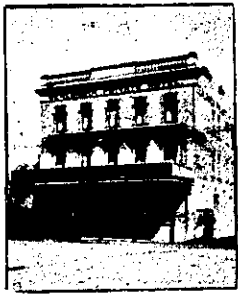
CLUB HOTEL, MARTON.

R. J. WALTERS ... Proprietor.
First-class accommodation for visitors and the travelling public.
Only the Best Brands of Ales, Wines and Spirits kept.
First-class Billiard-room.

CLUB HOTEL, LAMBTON QUAY, WELLINGTON.

First-class accommodation at a moderate tariff.
Every attention and all home comforts
Wines Spirits, Ales, etc., of the Best Quality.
E. SHERATT ... Proprietor

ZEALANDIA PRIVATE HOTEL, CAMBRIDGE TER., WELLINGTON. (Opp. Clyde Quay School). Tel. 1656.



First-class Accommodation for Boarders and the Travelling Public.
GOOD TABLE. MODERATE TARIFF.
Baths: Hot, Cold and Shower.
Trams to all parts of Town and Suburbs at corner.

This New and Commodious Building comprises 45 Rooms, and its Accommodation is equal to any in Wellington.
MRS E. RUSHETT ..... Proprietress.

COCKAYNE'S LEVIATHAN,

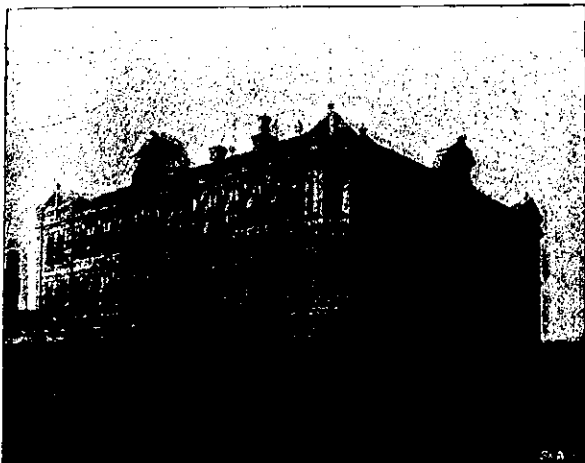
MANCHESTER and ST. ASAPH STREETS, CHRISTCHURCH.

Visitors to Christchurch should secure accommodation at the Leviathan. It offers all the advantages of an up-to-date home, and is furnished throughout in such a manner as to provide the Best Accommodation for Boarders, Visitors, and Travellers.
PRIVATE ROOMS FOR LADIES.
Hot and Cold Baths, Fire Escapes, etc.

Within Five Minutes' Walk from Christchurch Railway Station.

TARIFF: 4/6 PER DIEM. 30/- PER WEEK.

Comfort, Cleanliness, and Civility Guaranteed. Letters and Telegrams Receive prompt attention. TELEPHONE 747.



WELLINGTON—Continued.

DEVINE'S EMPIRE HOTEL, MAIN STREET, PALMERSTON NORTH.

Patrons can rely on being supplied with all leading brands of Whiskies, Wines and Brandies.
Special feature: First-class luncheon from 12 o'clock to 2 p.m. for One
Upstairs and dining-room under supervision of Mrs Devine.
Up-to-date Billiard Room, under capable management.
W. DEVINE (Late of Marton Hotel).....Proprietor

CALEDONIAN HOTEL, OPPOSITE BASIN RESERVE, WELLINGTON.

Trams Pass the Hotel every few minutes.
I beg to announce that the house, which has only lately been rebuilt and refurnished, is now open to the travelling public. Good table kept at a reasonable tariff None but the best brands of Wines and Spirits stocked, and only Speight's best draught Ales on tap.
GEO. A. ALLEN,
Late of the Albert Hotel, Wellington, Proprietor.

PRINCESS HOTEL, TERRACE END, PALMERSTON NORTH.

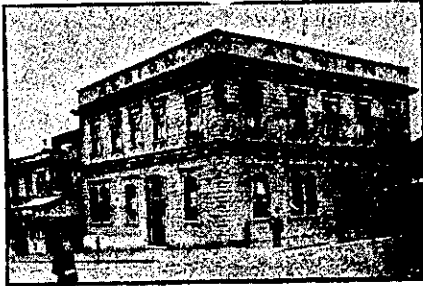
The travelling public can rely on being supplied with the best liquors, comfortable bedrooms, and first-class table. Finest Billiard Room and Table on the Coast. Terms moderate.
C. J. BARFORD .. Proprietor.

GRAND NATIONAL HOTEL, PETONE, WELLINGTON.

MR JOHN PYKE (late of the Cambridge and Imperial Hotels, Wellington) begs to notify his friends and the public generally that he has taken over this old-established and popular hostelry, which will be found replete with every modern convenience, and liquors of the best brands obtainable.
Excellent stabling, loose boxes, and paddocking.
JOHN PYKE - - - Proprietor.

THE NEW RAILWAY HOTEL, OPPOSITE RAILWAY STATION, PALMERSTON NORTH. J. HURLEY ..... PROPRIETOR.

Forty-five Rooms, 4 Bathrooms (hot and cold water), newly-furnished throughout. Up to date in every respect. First-class Table. Best Liquors only. Terms Moderate.



ALBION HOTEL, WANGANUI. (Opposite the Courthouse and Public Library).

PETER HARRISHORN
Desires to intimate to friends and the public generally that he has had the premises thoroughly renovated and refurnished throughout. The Best Wines and Spirits stocked. Speight's and Swan's Ales always on tap. Cuisine a Speciality. Luncheon from 12 to 2 o'clock. Excellent Accommodation for Boarders. Every convenience. Telephone
PETER HARRISHORN ... Proprietor.



SIDDELLS FEDERAL HOTEL, WANGANUI.

Opposite the Up-river Piers and Wharves and Boat-sheds. Three minutes' walk from Railway Station and Post Office. The beautiful and well-laid-out Moutoa Gardens across the road. First-class accommodation at reasonable tariff. Patrons can rely on Wines, Spirits, etc., being A1. Stock only Best Brands. Dine and Local Beer always on tap.
CHAR. SIDDELLS ... Proprietor.

RAILWAY HOTEL (OPPOSITE RAILWAY STATION), MARTON JUNCTION.

W. CLARKE .. Proprietor.
All trains stop sufficient time at station to enable passengers to obtain refreshments.
Good accommodation for the travelling public; also good stabling.

WELLINGTON—Continued.



METROPOLITAN HOTEL, WANGANUI. B. T. BENNETT ... Proprietor.

This commodious and well furnished family and commercial hotel is almost opposite railway station and town wharves. It has a lovely promenade roof which commands a splendid view of the town. The cuisine is in charge of an experienced chef. Mr Bennett's name is sufficient guarantee that nothing but the best of wines and spirits will be kept. Night Porter always in attendance. Visitors can rely upon getting the best of attention together with civility. Letters and telegrams promptly attended to. P.O. Box 138. Telephone 84.



CRITERION HOTEL, WANGANUI

This well-known hotel is in close proximity to the railway-station, thereby offering great facility to the travelling public of being able to leave by the early trains. Guests may depend upon being called in time, a porter being kept for that purpose. The bedrooms are well and comfortably furnished, and the fittings and accommodation throughout are all that can be desired. The wines and spirits are all of the choicest and best brands. Table d'Hote daily from 12 to 2, and meals at all hours for travellers.
W. H. BLEASEL ... Proprietor.



PROVINCIAL HOTEL, WANGANUI.

FIRST-CLASS ACCOMMODATION FOR THE TRAVELLING PUBLIC. ONLY THE BEST OF ALES, WINES, AND SPIRITS KEPT IN STOCK.
W. TUCK ..... Proprietor.

THE COMMERCIAL PRIVATE HOTEL, FEILDING.

Recently opened. Has been built in the most up-to-date style, and offers superior accommodation, together with the comforts of a home.
Excellent Cuisine.
Hot, Cold, and Shower Baths.
Moderate Tariff.

R. McFALRANE ..... PROPRIETOR.

THE COMMERCIAL HOTEL, PALMERSTON NORTH.

F. CHILDS ... Proprietor
The Proprietor of this conveniently situated Hotel having had the premises entirely renovated and remodelled, is prepared to receive travellers and the public generally, and guarantees strict attention, the best of wines and spirits, and trusts to obtain by these means a fair share of patronage.

WELLINGTON—Continued.

WAIRARAPA HOUSE, 51, KENT TERRACE, WELLINGTON.

SITUATED in the quietest and healthiest part of Wellington, yet only 6 minutes (per tram) to the heart of the city.

Lit up by electricity, hot and cold baths, smoking, reading, and ladies' sitting rooms, piano, lofty bedrooms, spacious dining room. First class table.

Trams stop at the door.
Tariff from 4s per day. Special arrangements for Families and Permanent Boarders.

GEORGE COKER (Late of the Wairarapa), PROPRIETOR.

CENTRAL HOTEL, WELLINGTON

(Two Minutes walk from Queen's Wharf).
A. M. GOW (late of Dunedin)..... Proprietor
ONLY BEST BRANDS OF LIQUOR KEPT
MODERATE CHARGES.

TARANAKI PROVINCE.

IMPERIAL HOTEL, DEVON STREET, NEW PLYMOUTH.

JAMES SMITH.....PROPRIETOR.

This popular house of call is under entirely new management, and is one of the most centrally situated hotels in New Plymouth. Guests may depend on being called to meet early trains, a porter being kept for that purpose.

Only Best Brands of Ales, Wines, and Spirits kept. Every possible convenience for the general and travelling public.

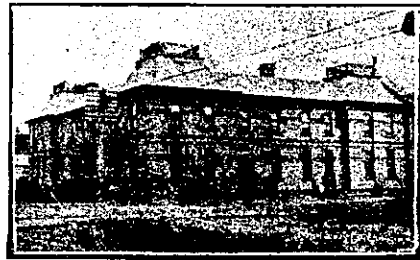
Terms, 6s 6d per day. TELEPHONE 123. Box 83.



MASONIC HOTEL, WAITARA

This hotel combines all the conveniences of a first-class House, together with a moderate tariff.

Hot, Cold, and Shower Baths.
Wines, Spirits, Ales, etc., of the Best Brands.
J. A. SMYTH.....PROPRIETOR



EGMONT HOTEL, HEATWENA

A. J. JURY ... Proprietor.
The Proprietor (lately of the Okaiawa Hotel, and formerly of the Shamrock) begs to inform his friends and the public generally that he has taken over the above popular hotel, and trusts that, by strict attention to their comfort, and by keeping only the best of liquors, to retain their patronage.

Advertisement for THE METROPOLITAN Grand Central Coffee Palace and Restaurant, located at the corner of Devon & Egmont Streets, New Plymouth. Includes details about the chef and proprietor Arrowsmith.