

WELLINGTON—Continued.



ALBERT HOTEL, WELLIS STREET, WELLINGTON.

MR D. P. BARRETT Has pleasure in intimating that he has taken over the proprietorship of this well-known Commercial and Family Hotel, and trusts that his long experience in first-class hotel-keeping will add to the comfort of visitors. Suits of Rooms and all first class Accommodation for Tourists and Boarders. Excellent Table kept.

FOXTON FAMILY HOTEL, FOXTON

Excellent Accommodation for the Travelling Public at a Moderate Tariff. Best Wines, Spirits, Ales, etc. Good Billiard Table Ample Stabling and Paddockings. Coaches run twice daily to Shannon. ANDREW LAING (late of Dannevirke).....Proprietor



PRIVATE HOTEL, No 70, INGESTRE-STREET, WELLINGTON.

First-class Accommodation. Good Table. All Up-to-date conveniences. Terms Moderate. Tel. 1063. JOSEPH ROSS ... Proprietor.

MASTERTON REFRESHMENT ROOMS.

Trains remain at Station to enable Passengers to obtain Refreshments. Fresh Tea made for every train. Tea, Coffee, Sandwiches, Cakes, Confectionery. Best Brands of Ales, Wines, Spirits, Cigars and Cigarettes. H. McMANAWAY ..... Proprietor.

CLUB HOTEL, LAMBTON QUAY, WELLINGTON.

First-class accommodation at a moderate tariff. Every attention and all home comforts Wines Spirits, Ales, etc., of the Best Quality. E. SHERATT ... Proprietor

CASBY'S FAMILY HOTEL, LOWER HUTT.

MR JOHN YOUNG begs to inform the Public that he has taken over the above. The Hotel has been thoroughly renovated, and now offers accommodation second to none in the district. Central position and close to the Gardens. Excellent Table, and Best Brands of Wines, Spirits, Ales, etc. Good Stabling and Commodious Loose Boxes. JOHN YOUNG.....Proprietor.

CLUB HOTEL, MASTERTON

The appointe! house for the Commercial Travellers and Warehousemen's Association, Wellington, also Cook's Tourist Travellers. All Appointments up-to-date. A. G. SCRINGBOUR .....Proprietor.

WELLINGTON—Continued.

DEVINE'S EMPIRE HOTEL, MAIN STREET, PALMERSTON NORTH.

Patrons can rely on being supplied with all leading brands of Whiskies, Wines and Brandies. Special feature: First-class luncheon from 12 o'clock to 2 p.m. for One ... Upstairs and dining-room under supervision of Mrs Devine. Up-to-date Billiard Room, under capable management. W. DEVINE (Late of Marton Hotel).....Proprietor

CALEDONIAN HOTEL, OPPOSITE BASIN RESERVE, WELLINGTON.

Trains Pass the Hotel every few minutes. I beg to announce that the house, which has only lately been rebuilt and refurbished, is now open to the travelling public. Good table kept at a reasonable tariff. None but the best brands of Wines and Spirits stocked, and only Speight's best draught Ales on tap. GEO. A. ALLEN, Late of the Albert Hotel, Wellington, Proprietor.

PRINCESS HOTEL, TERRACE END, PALMERSTON NORTH.

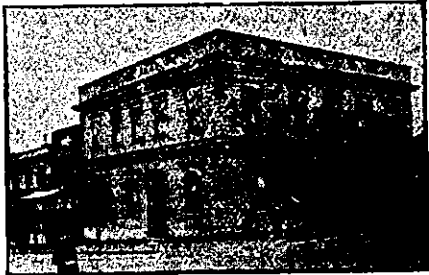
The travelling public can rely on being supplied with the best liquors, comfortable bedrooms, and first-class table. Finest Billiard Room and Table on the Coast. Terms moderate. C. J. BARFORD .. Proprietor.

GRAND NATIONAL HOTEL, PETONE, WELLINGTON.

MR JOHN PYKE (late of the Cambridge and Imperial Hotels, Wellington) begs to notify his friends and the public generally that he has taken over this old-established and popular hostelry, which will be found replete with every modern convenience, and liquors of the best brands obtainable. Excellent stabling, loose boxes, and paddocking. JOHN PYKE - - - Proprietor.

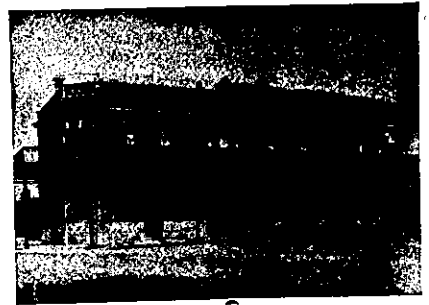
HAVANNE'S VICTORIA HOTEL, WANGANUI.

THE TOURIST'S HOTEL. Choicest Wines, Spirits and Cigars. Night Porter kept. Write or wire for rooms to T. S. ALMER, Proprietor.



ALBION HOTEL, WANGANUI. (Opposite the Courthouse and Public Library).

PETER HARTSHORN Desires to intimate to friends and the public generally that he has had the premises thoroughly renovated and refurbished throughout. The Best Wines and Spirits stocked. Speight's and Swan's Ales always on tap. Cuisine a Speciality. Luncheon from 12 to 2 o'clock. Excellent Accommodation for Boarders. Every convenience. Telephone. PETER HARTSHORN ... Proprietor.



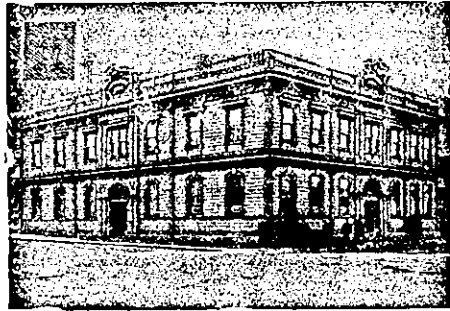
SIDDELLS FEDERAL HOTEL, WANGANUI.

Opposite the Up-river Piers and Wharves and Boat- ing-sheds. Three minutes' walk from Railway Station and Post Office. The beautiful and well-laid-out Montea Gardens across the road. First-class accommo- dation at reasonable tariff. Patrons can rely on Wines, Spirits, etc., being A1. Stock only Best Brands. Dunedin and Local Beer always on tap. CHAS. SIDDELLS ... Proprietor.

RAILWAY HOTEL (OPPOSITE RAILWAY STATION), MARTON JUNCTION.

W. CLARKE .. Proprietor. All trains stop sufficient time at station to enable passengers to obtain refreshments. Good accommodation for the travelling public; also good stabling.

WELLINGTON—Continued.



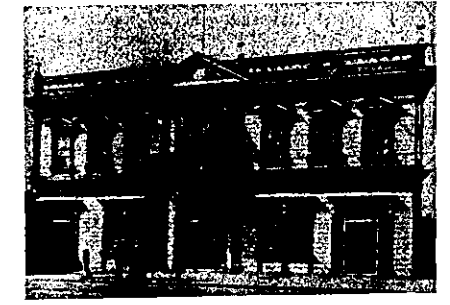
METROPOLITAN HOTEL, WANGANUI. B. T. BENNETT ... Proprietor.

This commodious and well furnished family and com- mercial hotel is almost opposite railway station and town wharves. It has a lovely promenade roof which commands a splendid view of the town. The cuisine is in charge of an experienced chef. Mr Bennett's name is sufficient guarantee that nothing but the best of wines and spirits will be kept. Night Porter always in atten- dance. Visitors can rely upon getting the best of attention together with civility. Letters and telegrams promptly attended to. P.O. Box 135. Telephone 84.



CRITERION HOTEL, WANGANUI

This well-known hotel is in close proximity to the railway-station, thereby offering great facility to the travelling public of being able to leave by the early trains. Guests may depend upon being called in time, a porter being kept for that purpose. The bedrooms are well and comfortably furnished, and the fittings and accommodation throughout are all that can be desired. The wines and spirits are all of the choicest and best brands. Table d'Hote daily from 12 to 2, and meals at all hours for travellers. W. H. BLEASEL ... Proprietor.



PROVINCIAL HOTEL, WANGANUI. FIRST-CLASS ACCOMMODATION FOR THE TRAVELLING PUBLIC. ONLY THE BEST OF ALES, WINES, AND SPIRITS KEPT IN STOCK.

THE COMMERCIAL PRIVATE HOTEL, FEILDING.

Recently opened. Has been built in the most up-to-date style, and offers superior accommodation, together with the com- forts of a home. Excellent Cuisine. Hot, cold, and shower baths. Moderate Tariff.

R. McFARLANE .....Proprietor.

THE COMMERCIAL HOTEL, PALMERSTON NORTH.

T. CHILDS ... Proprietor The Proprietor of this conveniently situated Hotel having had the premises entirely renovated and remodel- ed, is prepared to receive travellers and the public generally, and guarantees strict attention, the best of wines and spirits, and trusts to obtain by these means a fair share of patronage.

WELLINGTON—Continued.

WAIRARAPA HOUSE 51, KENT TERRACE, WELLINGTON

SITUATED in the quietest and health- iest part of Wellington, yet only minutes (per tram) to the heart of the city.

Lit up by electricity, hot and cold baths, smoking, reading, and ladies' sitting rooms, piano, lofty bedrooms, spa- cious dining room. First class table.

Trams stop at the door. Tariff from 4s per day. Special ar- rangements for Families and Permanent Boarders.

GEORGE COKER (Late of the Wairarapa), PROPRIETOR.

CENTRAL HOTEL WELLINGTON

(Two Minutes walk from Queen's Wharf).

A. M. GOV (late of Dunedin).....Proprietor

ONLY BEST BRANDS OF LIQUOR KEPT MODERATE CHARGES.

TARANAKI PROVINCE.

IMPERIAL HOTEL DEVON STREET, NEW PLYMOUTH

JAMES SMITH.....Proprietor.

This popular house of call is under en- tirely new management, and is one of the most centrally situated hotels in New Plymouth. Guests may depend on being called to meet early trains, a porter being kept for that purpose.

Only Best Brands of Ales, Wines, and Spirits kept. Every possible convenience for the general and travelling public.

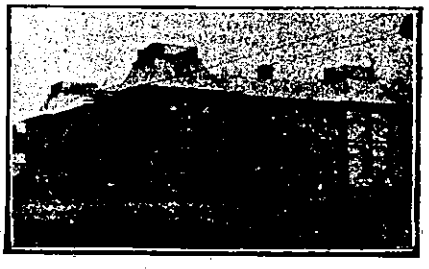
Terms, 6s 6d per day. TELEPHONE 123. Box 83.



MASONIC HOTEL, WAITARA

This hotel combines all the conveniences of first-class House, together with a modern tariff.

Hot, Cold, and Shower Baths. Wines, Spirits, Ales, etc., of the Best Brand J. A. SMYTH.....Proprietor



EGMONT HOTEL, HAWERA

A. J. JURY ... Proprietor. The Proprietor (late of the Okaiawa Hotel, and formerly of the Shamrock) begs to inform his friends and the public generally that he has taken over the above popular hotel, and trusts that, by strict attention to their comfort, and by keeping only the best of liquors, to retain their patronage.

COCKAYNE'S LEVIATHAN, MANCHESTER and ST. ASAPH STREETS, CHRISTCHURCH.

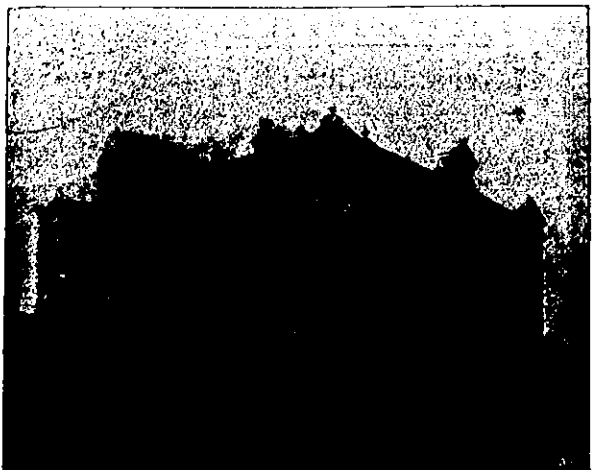
Visitors to Christchurch should secure accommodation at the Leviathan. It offers all the advantages of an up-to-date home, and is furnished throughout in such a manner as to provide the Best Accommodation for Boarders, Visitors, and Travellers.

PRIVATE ROOMS FOR LADIES. Hot and Cold Baths, Fire Escapes, etc.

Within Five Minutes' Walk from Christchurch Railway Station.

TARIFF: 4/6 PER DIEM. 30/- PER WEEK.

Comfort, Cleanliness, and Civility Guaranteed. Letters and Telegrams Receive prompt attention. TELEPHONE 747.



THE METROPOLITAN Grand Central Coffee Palace and Restaurant CORNER OF DEVON & BROMPTON STREETS, NEW PLYMOUTH. Within one minute's walk of Railway Station, Post Office and Banks. (Recognized as the Leading Unlicensed Hotel in Taranaki.) The above is specially adapted for the Convenience and Comfort of the Commercial and Social Travelling Public, and in every way equal to a First-class Hotel. Lofty and airy bedrooms, Ladies' Tea Rooms, Drawing-rooms, Spacious Dining-rooms, Commercial Kitchens, Hot, Cold, and Shower Baths, Convenient and Commodious Sample Rooms. THE PROPRIETOR IS UNDER AN EXPERIENCED CHEF. Terms: Per Day, 4s; Per Week, 22s. ARROWSMITH, PROPRIETOR.