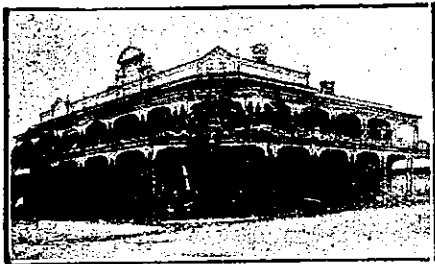


TARANAKI—Cont.



RED HOUSE HOTEL, DEVON-ST., NEW PLYMOUTH. EDWIN WHITTLE.....PROPRIETOR.

Rebuilt and refurnished, this well-known hostelry now contains every comfort for guests. The Liquors stocked are the Choicest to be bought in the Market. PAUL'S XXXX ALES ON DRAUGHT.

COMMERCIAL HOTEL, WAVERLEY. CHAS. A. HARRISON.....PROPRIETOR.

First-class Accommodation for Travellers. Moderate Tariff. Wines, Spirits, Ales, etc., best quality procurable.

TARANAKI HOTEL BROUGHAM-STREET, NEW PLYMOUTH.

N. J. JULIAN (late Railway Hotel, Inglewood), Proprietor.

All Wines and Spirits stocked of the Best Quality. Twenty-year-old, Guaranteed Liqueur Whisky a Specialty. Paul's XXXX Ales.

BREAKWATER HOTEL, MOTUROA, NEW PLYMOUTH.

Situated three minutes' walk from the Wharf. Only the best of Ales, Wines and Spirits Kept. Excellent Accommodation and Good Fishing. Telephone 152.

TOMMY KNOWLES .. Proprietor

CLARENDON HOTEL, WAVERLEY.

MR GEORGE OAKENFULL (Late of Waipawa) begs to inform the travelling public and residents of Waverley that he has taken over the Clarendon Hotel. He hopes that with strict attention to the comfort of his guests, a good table, and the best of ales, wines, spirits, etc., to be favoured with their patronage.

THE NEW "TROCADERO" TEMPERANCE HOTEL. EGMONT-STREET, NEW PLYMOUTH.

One minute from Railway Station. Every convenience provided for the Travelling public. Meals, 1s. Beds, 1s 6d. Meals served on arrival of trains and steamers. New building with brick walls. Complete fire escapes. Commodious and airy bedrooms and sitting-rooms. Hot, cold, and shower baths. Terms: From 4s 6d per day; weekly as per arrangement. HALE & Co., Proprietors.

EMPIRE HOTEL, HAWERA.

MRS TODD begs to announce that she has purchased Mr McLennan's interest in the above hotel, and that she intends to run it on up-to-date lines. The house is being thoroughly renovated, and patrons may rely upon getting comfortable rooms.

Only the best wines and spirits are kept in stock. A first-class table; tariff, 4/6 a day. MRS TODD (late of Railway Hotel, Palmerston), Proprietress.

THE "TROCADERO" PRIVATE HOTEL AND RESTAURANT.

CORNER OF EAST ROAD AND JULIET-STREET, STRATFORD. Under Entirely New Management. Specially adapted for the Convenience and Comfort of the Travelling Public. Commodious and Airy Bed and Sitting Rooms. Electric Light. Hot and Cold Baths. The Kitchen is under the supervision of an experienced Chef. Terms per Day, 4s 6d; per Week, 20s. Permanent Boarders, 18s. MRS M. JONES, Proprietress (Late of Queen-street Auckland).

HAWKE'S BAY PROVINCE.

TARADALE HOTEL, TARADALE (NEAR NAPIER).

This hotel just rebuilt and refurnished in modern style, offers excellent accommodation to the travelling public. Hot and cold baths. Liquors of the best brands procurable. Splendid and ample paddocking, stables and loose boxes. A. FITZWILLIAM .. Proprietor.

THE COMMERCIAL HOTEL, WOODVILLE (CLOSE TO RAILWAY STATION).

MR C. T. GRAY has lately taken over the above well-known and popular house, and trusts by attention to business, and keeping everything of the best only, to merit a continuance of the patronage bestowed on his predecessors. Passengers by early trains can rely on being called. C. T. GRAY .. Proprietor.

COMMERCIAL HOTEL, WAIPAWA Private Suites of Apartments and every Convenience for the Accommodation of the public.

WINE, SPIRITS & BEER of the Best Quality—Only A FIRST-CLASS BILLIARD TABLE. Good Stabling and Paddock Accommodation. W. PELLOW PROPRIETOR

RAILWAY HOTEL HASTINGS, PERCY MARTIN - Proprietor.

First-class Accommodation to the Travelling Public. Wines and Spirits of the best brands. First-class Billiard Room.

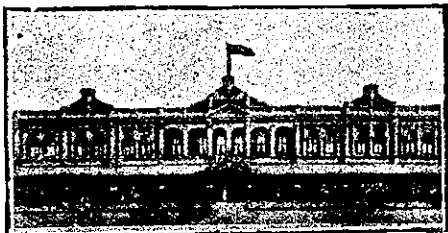
HAWKE'S BAY—Cont.

E. J. WARREN.

(Formerly of the Havelock and Taradale Hotels).

HAS taken over the Albert Hotel, Hastings, which now replete with every comfort and convenience, and he will be glad to see all friends, both new and old. First-class Accommodation for Boarders and Travellers. Terms Moderate. Luncheon 12 noon to 2 p.m. Bel John's Prize Ale on Draught. Ward's Speight's at Manning's in bottle. Nothing but Best Brands of Wines and Spirits stocked. Telephone No. 11

CANTERBURY PROVINCE.



TROCADERO PRIVATE HOTEL, MANCHESTER STREET, CHRISTCHURCH. One Minute's Walk from Railway Station.

R. C. DAVID, PROPRIETOR.

First-class Accommodation for Permanent and Travelling Public.

Motor Buses Pass the Door Every Few Minutes. Luncheon from 12 to 2 p.m. Furnished in the Best Style. Hot and Cold Shower Baths. Letters and Telegrams receive Prompt Attention. Night Porter in Attendance. Phone 1591. MODERATE TARIFF.

CRITERION HOTEL, TIMARU.

WILLIAM TOBIN (late of the Timaru Hotel) Has Leased the above Hotel, and will be glad to receive Friends and Visitors to Timaru. First-class Accommodation. Well-appointed Billiard Rooms, Hot and Cold Water Baths. The Best Brands of Spirits and Ale in Stock. Terms Reasonable. Theatricals Privately Catered For. WM. TOBIN .. PROPRIETOR.

CLUB HOTEL, TIMARU.

Close to Railway Station, and offering Excellent Accommodation to Travellers. Liberal Cuisine. Hot and Cold Baths. Best Brands of Liquors Stocked. Moderate Tariff. E. WARD, Proprietor.

WALLINGFORD HOTEL, TEMUKA.

J. REILLY (late of the Criterion Hotel, Temuka).

First-class Accommodation for Travellers and Boarders. Baths, Hot, Cold and Shower. Best Brands of Wines, Spirits and Ales. Good Billiard-room. Free Stabling. One minute's walk and first house from Railway Station.

MASONIC HOTEL, CHRISTCHURCH

VISITORS to above Hotel will find a comfortable HOME, with Moderate Tariff. EDWARD POWER, (Late Dunedin) Proprietor.

THE GLADSTONE HOTEL, OFF PAPANUI ROAD, CHRISTCHURCH.

AN UP-TO-DATE HOUSE. Excellent Accommodation. Liquors of Special Quality and Great Variety. Manning's Ales on Draught. H. PIPER Proprietor.

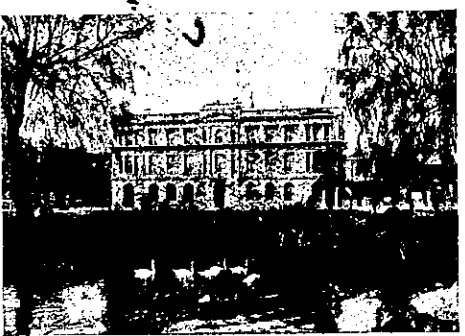
Where to Stay in Christchurch!

STOREY'S TERMINUS HOTEL

(Opposite Christchurch Railway Station.) LICENSEE .. F. W. MILLWARD.

Visitors to this spacious hotel receive every possible attention and modern comfort. Letters and telegrams are promptly attended to. Telephone 795. SPEIGHT'S PRIZE ALES ON DRAUGHT.

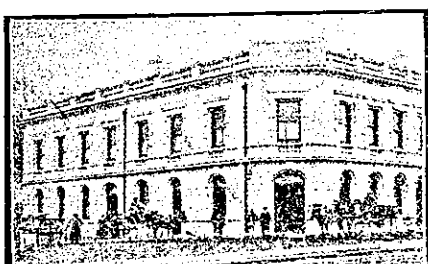
Special Arrangements made with Permanent Boarders and Theatrical Parties, etc. Tariff .. 8s per Day. £2 2s per Week.



THE NEW CLARENDON HOTEL, CHRISTCHURCH. CORNER OF OXFORD TERRACE AND WORCESTER-STREET (One minute's walk from General Post Office.)

Recently Re-built. Superior Accommodation for Tourists and Travellers. All Modern Conveniences. Splendidly Situated. D. COLLINS .. PROPRIETOR.

CANTERBURY—Cont.



THE CARL ON HOTEL, NORTH BELT AND PAPANUI ROAD, CHRISTCHURCH.

F. DAVY..... Proprietor. This old-established Hotel, containing 26 rooms, being recently re-built in brick and stone offers special advantages to Tourists, Travellers, and others, who will find all the comforts of a home at this fine hostelry. The House is within eight minutes' walk from Cathedral Square. Trams pass every twenty minutes. Ventilation throughout has been made a special feature in the construction of this House. Numerous fine escapes. Hot, Cold and Shower Baths. (Using a Specialty Tariff Moderate. Only the Best Brands of Liquor Dispensed. Ward's XXX and XXXX Ales Stabling Commodious Stalls and Loose Boxes. Groom in charge. Letters and Telegrams receive Prompt Attention. Telephone.

OTAGO PROVINCE.

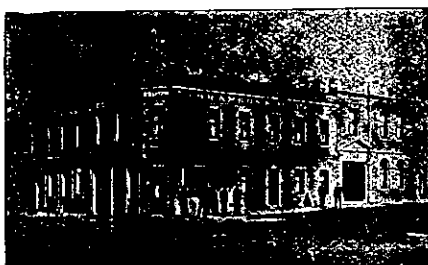
METROPOLE PRIVATE HOTEL, 228 PRINCES STREET, DUNEDIN (8 Min. from Post Office).

MRS WAITS .. PROPRIETRESS. Ideal Home for Families, Tourists, Visitors, and Commercial.

TARIFF FROM 4s 6d. PER DAY. Permanent Boarders special arrangement. Electric Tram stops at door. Metropole Express meets Trains and Steamers. Tel. 1804.

BOWLING GREEN HOTEL, CORNER OF FREDERICK AND CUMBERLAND STREETS, DUNEDIN.

W. D. WYATT, late of Wellington, begs to inform his Friends and Country Visitors that he has taken the above well-known Hotel, which has been thoroughly Renovated and Re-furnished, and is now in a position to offer his Patrons First class Accommodation. TERMS MODERATE. NOTED HOUSE FOR THE BEST WINES & SPIRITS



BRANSON'S HOTEL, DUNEDIN.

A HOUSE NEWLY BUILT. NEWLY FURNISHED. PERFECT IN ALL PARTS. GO TO..... ST. ANDREW STREET. CHAS. B. M. BRANSON Proprietor.

CALEDONIAN HOTEL, WALKER-STREET, DUNEDIN

W. H. SKITCH having purchased the above commodious Hotel, which has recently been renovated, is now prepared to make provision for Country Travellers. Hot and Cold Showers. Terms—4/6 per Day; 20/- per Week.

CHICK'S PRIVATE HOTEL, MOUNT-STREET, PORT CHALMERS.

Best of Accommodation at a Moderate Tariff. Cuisine a Speciality.

VISITORS to Oamaru will find Up-to-Date Accommodation and the best of Liquors at the

IMPERIAL.

MRS PARKER, Proprietress.

GLADSTONE HOTEL, MACLAGGAN-STREET, DUNEDIN.

JOHN COLLINS.....PROPRIETOR. (Late of Al Hotel, Pelichet Bay.)

The most centrally-situated Hotel in the City. First-class Accommodation for Tourists, Travellers and Boarders. Suites of rooms for families. Charges moderate. A Special Feature: 1s Lunch from 12 to 2 o'clock. Hot, cold, and shower baths. The very best of Wines, Ales, and Spirits supplied.

SOUTHLAND PROVINCE.

DESCHLER'S COMMERCIAL, FAMILY AND PRIVATE HOTEL. 88K-STREET, INVERCARGILL

Lately re-built and newly furnished throughout. Within two minutes' walk of Railway Station Post and Telegraph Offices. Sample Rooms. P. Box 40. Telephone 300.

RAILWAY HOTEL (OPPOSITE R.S.) INVERCARGILL.

This Hotel is justly noted for its Superior Table, and its proximity to the Station makes it most convenient for Travellers in Invercargill. Splendidly furnished throughout, and equipped in every respect. Terms moderate. Telephone 273.

THE NEW CLUB HOTEL, BLUFF.

C. SUTHERLAND .. PROPRIETOR.

Lighted throughout with Electric Light.

A New Town Hall has lately been erected by the above Proprietor.

GREYMOOUTH.

WAVERLEY HOTEL, GREYMOOUTH.

This hotel is centrally situated, and offers the comfort of a home.

Best Brands of Wines, Spirits, and Ales.

MRS E. GILMER ... PROPRIETRESS.

NELSON.

MASONIC HOTEL, NELSON.

CHANGE OF OWNERSHIP.

This long-established Hotel, which has always been the Headquarters in Nelson for Tourist and Commercial Travellers, has recently been purchased by Mr H. Baggett. The Hotel has been thoroughly Renovated and all the Rooms are being refitted in modern style. No effort will be spared to make all visitors thoroughly comfortable.

HOKITIKA.

OCCIDENTAL HOTEL, WHARF STREET, HOKITIKA.

Centrally and conveniently situated, offering the best accommodation at a moderate tariff. Wines, Spirits, Ales etc., of the best quality procurable. Cuisine excellent, under the personal supervision of Mrs Woolhouse. TARIFF—5/- per diem, £1 1/- per week. Mrs N. M. WOOLHOUSE, PROPRIETRESS.

REEFTON

ROXBOROUGH'S RAILWAY HOTEL, REEFTON.

A Really First-class Hotel. The Comfort and Convenience of Visitors is studied in every way. The Table is maintained at a Standard of Excellence, therefore Guests can be certain of obtaining the Best Menu in Reefton. Splendid Sample Room. Hot, Cold, and Crescent Showers Available. The Best of Wines, Spirits, and Ales procurable. Telephone No. 28. J. ROXBOROUGH ... Proprietor.

GLADSTONE HOTEL, REEFTON.

This Hotel, having been thoroughly renovated and refurnished throughout, now offers Superior Accommodation at a moderate tariff. Best Brands of Wines, Spirits, Ales, etc. TARIFF: 4/6 PER DIEM. R. DUNPHY..... Proprietor

WESTPORT.



EMPIRE HOTEL, WESTPORT H. McMASTER .. PROPRIETOR (Late Chief Steward White Star Line and N.Z. Shipping Company).

Recently Refurnished and Renovated throughout. This Hotel will be found to offer every Modern convenience to Commercial Travellers and Visitors. Night Porter kept. Cuisine a Speciality. Two Alcock's Billiard Tables. Six Sample Rooms. Good Stabling. Speight's Beer always on Draught.



GRAND HOTEL, PALMERSTON STREET, WESTPORT.

DAVID LEECH - - PROPRIETOR.