

TARANAKI PROVINCE

IMPERIAL HOTEL, DEVON STREET, NEW PLYMOUTH. JAMES SMITH Proprietor.

This popular house of call is under entirely new management, and is one of the most centrally situated hotels in New Plymouth.

Only Best Brands of Ales, Wines and Spirits kept. Every possible convenience for the general and travelling public.

Terms, 6s. 6d. per day. Tel. 64.



MASONIC HOTEL, WAITARA. This hotel combines all the conveniences of a first-class House, together with a moderate tariff.

TARANAKI HOTEL, BROUGHAM STREET, NEW PLYMOUTH. N. J. JULIAN (late Railway Hotel, Inglewood), Proprietor.

All Wines and Spirits stocked of the Best Quality. Twenty-year-old Guaranteed Liqueur Whisky a Speciality.

WANGANUI



METROPOLITAN HOTEL, WANGANUI. B. T. BENNETT Proprietor. This commodious and well furnished family and commercial hotel is almost opposite railway station and town wharves.

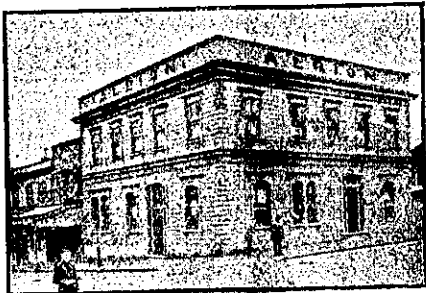
CLARENDON HOTEL, WAVERLEY. This old-established House has recently been taken over by Mrs C. K. Quin, who is thoroughly acquainted with the requirements of the district.



RUTLAND HOTEL, WANGANUI. F. C. FABER Proprietor. THE HOME OF THE TOURIST. The above hotel has just been rebuilt and newly furnished throughout in an up-to-date style.

CHAVANNES' VICTORIA HOTEL, WANGANUI. THE TOURIST'S HOTEL. Choicest Wines, Spirits and Cigars. Night Porter kept.

WANGANUI—Continued.



ALBION HOTEL, WANGANUI. (Opposite the Courthouse and Public Library). PETER HARTSHORN Desires to intimate to friends and the public generally that he has had the premises thoroughly renovated and refurnished throughout.

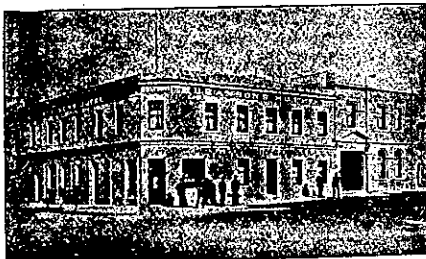
CLARENDON HOTEL, WAVERLEY. MR GEORGE OAKENFULL (Late of Waipawa) Begs to inform the travelling public and residents of Waverley that he has taken over the Clarendon Hotel.

OTAGO PROVINCE.

METROPOLE PRIVATE HOTEL, 228 PRINCES STREET, DUNEDIN (3 Min. from Post Office). MRS WAITS Proprietress. Ideal Home for Families, Tourists, Visitors, and Commercial.

BOWLING GREEN HOTEL, CORNER OF FREDERICK AND CUMBERLAND STREETS, DUNEDIN.

W. D. WYATT, late of Wellington, begs to inform his Friends and Country Visitors that he has taken the above well-known Hotel, which has been thoroughly renovated and re-furnished.



BRANSON'S HOTEL, DUNEDIN. A HOUSE NEWLY BUILT. NEWLY FURNISHED. PERFECT IN ALL PARTS. GO TO..... ST. ANDREW STREET. CHAS. B. M. BRANSON Proprietor.

CALEDONIAN HOTEL, WALKER-STREET, DUNEDIN. W. H. SKITCH having purchased the above commodious Hotel, which has recently been renovated, is now prepared to make provision for Country Travellers.

CHICK'S PRIVATE HOTEL, MOUNT-STREET, PORT CHALMERS. Best of Accommodation at a Moderate Tariff. Cuisine a Speciality.

VISITORS to Oamaru will find Up-to-Date Accommodation and the best of Liquors at the IMPERIAL. MRS PARKER, Proprietress.

GLADSTONE HOTEL, MAOLAGGAN STREET, DUNEDIN. JOHN COLLINS Proprietor. (Late of Al Hotel, Pelichet Bay.) The most centrally situated Hotel in the City.

SOUTHLAND PROVINCE.

DESCHLER'S COMMERCIAL, FAMILY AND PRIVATE HOTEL. ESK-STREET, INVERCARGILL. Lately re-built and newly furnished throughout. Within two minutes' walk of Railway Station Post and Telegraph Offices. Sample Rooms. P. O. Box 40. Telephone 300.

RAILWAY HOTEL (OPPOSITE R.S.) INVERCARGILL. This Hotel is justly noted for its Superior Table, and its proximity to the Station makes it most convenient for Travellers in Invercargill.

THE NEW CLUB HOTEL, BLUFF. C. SUTHERLAND Proprietor. Lighted throughout with Electric Light. A New Town Hall has lately been erected by the above Proprietor.

GREYMOOUTH. WAVERLEY HOTEL, GREYMOOUTH. This hotel is centrally situated, and offers the comfort of a home. Best Brands of Wines, Spirits, and Ales. MRS E. GILMER Proprietress.

NELSON. MASONIC HOTEL, NELSON. CHANGE OF OWNERSHIP. This long-established Hotel, which has always been the Headquarters in Nelson for Tourist and Commercial Travellers, has recently been purchased by Mr H. Bagent.

HOKITIKA. OCCIDENTAL HOTEL, WHARF STREET, HOKITIKA. Centrally and conveniently situated, offering the best accommodation at a moderate tariff. Wines, Spirits, Ales, etc., of the best quality procurable.

REEFTON.

ROXBOROUGH'S RAILWAY HOTEL, REEFTON. A Really First-class Hotel. The Comfort and convenience of Visitors is studied in every way. The Table is maintained at a Standard of Excellence.

GLADSTONE HOTEL, REEFTON. This Hotel, having been thoroughly renovated and refurnished throughout, now offers Superior Accommodation at a moderate tariff. Best Brands of Wines, Spirits, Ales, etc. TARIFF: 4/6 PER DIEM. R. DUNPHY Proprietor.

WESTPORT.



EMPIRE HOTEL, WESTPORT. H. McMASTER Proprietor. (Late Chief Steward White Star Line and N.Z. Shipping Company). Recently Refurnished and Renovated throughout.

GRAND HOTEL, PALMERSTON STREET, WESTPORT. DAVID LEECH Proprietor.

Visitors to New Zealand...

And those who Purpose Travelling through the Colony should Buy a Copy of the New Guide just issued,

“WHERE TO GO and WHERE TO STAY. in NEW ZEALAND.”

Contains Reliable information as to the Best Hotels and Boarding Houses in the Principal Towns of New Zealand.

The Towns are arranged Alphabetically, with short descriptive notes, particulars of Tourist Routes, Health and Pleasure Resorts, etc.

Price, 1s. - - All Booksellers.