

WELLINGTON—Continued.

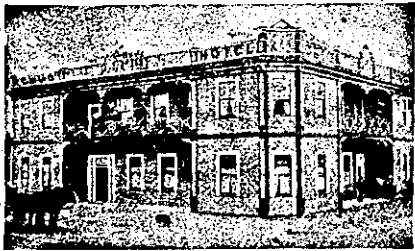


EMPIRE HOTEL MASTERTON.

J. CRESS Proprietor. This popular house of call is under entirely new management, and is one of the most centrally situated hotels in Masterton. Cab meets all Trains. Guests may depend on being called to meet early trains, a porter being kept for that purpose. Only Best Brands of Ales, Wines, and Spirits kept. Every possible convenience for the general and travelling public. Terms, 4s 6d per Day. Telephone 64.

FEILDING HOTEL KIMBOLTON ROAD, FEILDING.

Under Patronage of His Excellency Lord Ranfurly. This favourite hostelry has been renovated and re-furnished throughout. Private and Public Drawing Rooms upstairs en suite. First class Billiard Room. The most commodious Sample Rooms bet een Wellington and Wanganui. The cuisine is under the supervision of an experienced cook. Noted for best Wines, Spirits, and Beers of any house on the Coast. The Feilding Club have rooms at the above Hotel. Superior stable accommodation with groom in charge. D. ZANDER Proprietor



THE CLUB HOTEL, CARTERTON.

Has been taken possession of by MR AND MRS R. BUCKERIDGE, Late of Martinborough. Who have obtained the Freehold of this Hostelry. Being a Free House, none but the Best Ales and Spirits are kept. Speight's, Joel's, Strachan's, Staple's, and Manning's Beer always on tap. Meals and Beds a Speciality. An Up-to-date Billiard-room and Alcock's Billiard Table. The Travelling Public are requested to observe it's close proximity to the Railway station. THE CLUB HOTEL, Belvedere Road, Carterton.

FOXTON FAMILY HOTEL, FOXTON

Excellent Accommodation for the Travelling Public at a Moderate Tariff. Best Wines, Spirits, Ales, etc. Good Billiard Table Ample Stabling and Paddocking. Coaches run twice daily to Shannon. ANDREW LAING (late of Dannevirke) Proprietor

LEVIN HOTEL

(To which is attached the Horowhenua County Club and the Levin Aerated Water Factory.) D HANNAN Proprietor.

The Proprietor wishes to inform the travelling public that the above well and favourably-known Hotel has recently been enlarged and renovated, making it now one of the Best Hotels in the North Island, where patrons may rely on receiving every attention and the comforts of a home, while the tariff is moderate and the chef at Town Hall for theatrical and other performances, recently enlarged and improved. Best wines and spirits stocked. Dunedin and other celebrated colonial ales on tap. Large billiard and sample rooms. Cyclist Touring Club's "Rest," the visitors' resort. Horses and traps on hire. Beautiful view of Horowhenua Lake from balcony. Hot and cold water laid on. Separate apartments for families and ladies. Coaches meet all trains in valde, holiday makers, and persons seeking change of air cannot do better than patronise this establishment, as the climate of Levin is superb. Telegraphic address, "Levin Hotel, Levin."

WELLINGTON—Continued.

BARRETT'S NEW HOTEL, LAMBTON QUAY, WELLINGTON.

THIS Hotel has just been completed and furnished throughout in the best style, making it a hostelry second to none in the colony. Its close proximity to the wharf, trains, and trams renders it an excellent and convenient Hotel for visitors and travellers to be accommodated. The general features of Barrett's New Hotel will be found to be thoroughly up-to-date in every way. Best of everything for permanent boarders, visitors, families, and the travelling public, at moderate rates. Nothing but the finest quality of Wines, Ales, and Spirits stocked. Civility and attention to all patrons. J. J. KELLY Proprietor.

CENTRAL HOTEL WELLINGTON

(Two Minutes walk from Queen's Wharf). A. M. GOW (late of Dunedin) Proprietor ONLY BEST BRANDS OF LIQUOR KEPT MODERATE CHARGES.

DEVINE'S EMPIRE HOTEL, MAIN STREET, PALMERSTON NORTH.

Patrons can rely on being supplied with all leading brands of Whiskies, Wines, and Brandies. Special feature: First-class luncheon from 12 o'clock to 2 p.m. for One ... Upstairs and dining-room under supervision of Mrs Devine. Up-to-date Billiard Room, under capable management. W. DEVINE (Late of Marton Hotel) Proprietor

POST OFFICE HOTEL, WELLINGTON.

Best Dinner for One Shilling in the Antipodes. McCarthy's, Staple's, and Speight's Beer. E. WILSON Proprietor.

GRAND NATIONAL HOTEL, PETONE, WELLINGTON.

MR JOHN PYKE (late of the Cambridge and Imperial Hotels, Wellington) begs to notify his friends and the public generally that he has taken over this old-established and popular hostelry, which will be found replete with every modern convenience, and liquors of the best brands obtainable. Excellent stabling, loose boxes, and paddocking. JOHN PYKE Proprietor.

CENTRAL HOTEL, LOWER HUTT

M. J. HODGINS Proprietor. This Hotel is now under entirely new management, and has been thoroughly renovated throughout, affording the best accommodation for the travelling public. Being in close proximity to the Hutt Racecourse, the Hotel offers every facility to visiting owners and trainers. Wines, Ales and Spirits of the best quality only kept in stock. First-class Billiard Table. Letters and Telegrams receive prompt attention. Stabling—eight large and commodious loose boxes.

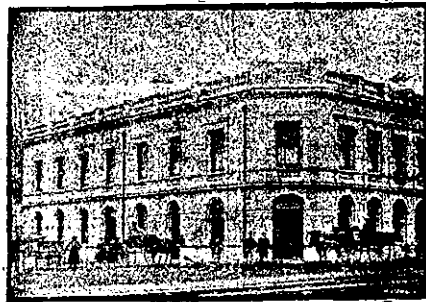
CHRISTCHURCH.

Where to Stay in Christchurch!

STOREY'S TERMINUS HOTEL

(Opposite Christchurch Railway Station.) LICENSEE .. F. W. MILLWARD. Visitors to this spacious hotel receive every possible attention and modern comfort. Letters and telegrams are promptly attended to. Telephone 795. SPEIGHT'S PRIZE ALES ON DRAUGHT. Special Arrangements made with Permanent Boarders and Theatrical Parties, etc. Tariff .. 8s per Day £2 2s per Week

CHRISTCHURCH—Continued.



THE CARLTON HOTEL, NORTH BELT (AND PAPANUI ROAD, CHRISTCHURCH). F. DAVY Proprietor. This old-established Hotel, containing 26 rooms, being recently re-built in brick and stone, offers special advantages to Tourists Travellers, and others, who will find all the comforts of a home at this fine Hostelry. The House is within eight minutes' walk from Cathedral Square. Trams pass every twenty minutes. Ventilation throughout has been made a special feature in the construction of this House. Numerous Fire Escapes. Hot, Cold and Shower Baths. Cuisine a Specialty. Tariff Moderate. Only the Best Brands of Liquors Dispensed. Ward's XXX and XXXX Ales. Stabling—Commodious Stalls and Loose Boxes. Groom in charge. Letters and Telegrams receive Prompt Attention. Telephone.



NEW CRITERION HOTEL, GLOUCESTER STREET, CHRISTCHURCH.

Being now Thoroughly Complete, this is one of the best-appointed Houses in the City. Every room, including bedrooms, electrically lighted and newly furnished. Ample accommodation for Travellers, Tourists, and Families. Special Arrangements for Theatrical Companies. Liberal Cuisine. Choicest Liquors, Terms Moderate. Night Porter. Telephone 914. GEORGE FOX, Manager.



THE NEW CLARENDON HOTEL, CHRISTCHURCH.

CORNER OF OXFORD TERRACE AND WORCESTER STREET (One minute's walk from General Post Office.) Recently Re-built. Superior Accommodation for Tourists and Travellers. All Modern Conveniences. Splendidly Situated. D. COLLINS Proprietor.

CHRISTCHURCH-DUNEDIN EXPRESS DINING-CARS.

T. FAIRHURST Caterer. Grills and Light Refreshments at all times on the Journey. All Fruits in Season of the Best Quality. Favourite Brands of Cigars, Cigarettes, and Tobacco.

THE GLADSTONE HOTEL (Of Papanui Road), CHRISTCHURCH.

AN UP-TO-DATE HOUSE. Excellent Accommodation. Liquors of Special Quality and in Great Variety. H. PIPER Proprietor

CHRISTCHURCH—Continued.

RICHARDSON'S BRITISH HOTEL, LYTTELTON.

The Leading Hotel of Lyttelton. Excellent Accommodation. Liberal Table. Hot, Cold and Shower Baths. Best Brands of Wines and Spirits and Dunedin Beer on tap. F. F. KEPPLER (late of Devanahelle's Bay) Proprietor.

MASONIC HOTEL, CHRISTCHURCH.

VISITORS to above Hotel will find a comfortable HOME, with Moderate Tariff. EDWARD POWER, (Late Dunedin) Proprietor.

HAWKE'S BAY PROVINCE.



CALEDONIAN HOTEL, HASTINGS STREET, NAPIER.

A. C. BARNES Proprietor

E. J. WARREN.

(Formerly of the Havelock and Taradale Hotels). HAS taken over the Albert Hotel, Hastings, which is now replete with every comfort and convenience, and he will be glad to see all friends, both new and old. First-class Accommodation for Boarders and Travellers. Terms Moderate. Luncheon 12 noon to 2 p.m. Robjohn's Prize Ale on draught. Ward's, Speight's and Manning's in bottle. Nothing but Best Brands of Wines and Spirits stocked. Telephone No. 11.

PROVINCIAL HOTEL, CLIVE SQUARE, NAPIER.

J. W. McDUFF Proprietor. The above Hotel has been entirely rebuilt in brick, and furnished and fitted up in the latest and most up-to-date manner. Has fine roomy and well-ventilated bedrooms, with numerous sitting, smoking, and waiting rooms. The Billiard Room is the Best in the District, fitted up with two first-class tables, and under the charge of a competent marker. Best Brands of Wines, Spirits etc., Only Kept.

UNDER THE PATRONAGE OF THE EARL OF HANFORD

WAIKURAU HOTEL, WAIKURAU.

Tourists, Commercials and Families will find this Hotel replete and most up-to-date. Good trout-fishing in Waikurau and Tukiuki Rivers. Shooting on lake three-quarters of a mile from Hotel. Stabling and Paddocks. R. HUNTER Proprietor.

CAFE DE PARIS, DANNEVIRKE, NEARLY OPPOSITE TELEGRAPH OFFICE (LATE POST OFFICE BOARDING HOUSE).

MR E. Q. TATTERSALL desires to announce that he has taken over the above well-known premises (which have recently been enlarged and refurbished throughout), and trusts by keeping everything in an up-to-date style to merit a fair share of support. First-class Accommodation offered to Boarders and the General Public. Baths—Hot, Cold, and Spray. Upstairs and Dining-Room under the supervision of Mrs TATTERSALL.

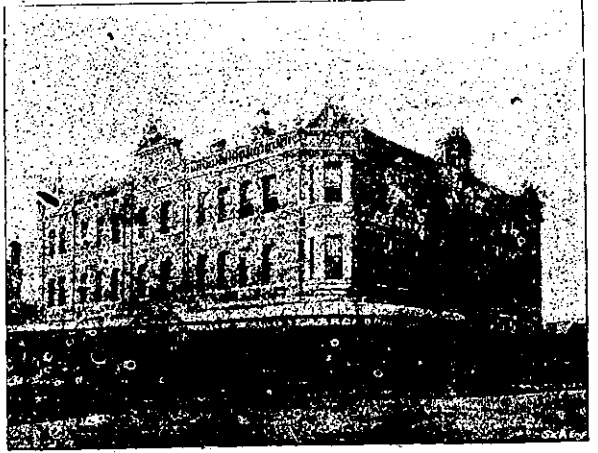
COMMERCIAL HOTEL, WAIKAWA

Private Suites of Apartments and every Convenience for the Accommodation of the public. WINES, SPIRITS & BEER of the Best Quality Only. A FIRST-CLASS BILLIARD TABLE. Good Stabling and Paddock Accommodation. W. PELLOW Proprietor

COCKAYNE'S LEVIATHAN,

MANCHESTER and ST. ASAPH STREETS, CHRISTCHURCH.

Visitors to Christchurch should secure accommodation at the Leviathan. It offers all the advantages of an up-to-date home, and is furnished throughout in such a manner as to provide the Best Accommodation for Boarders, Visitors, and Travellers. PRIVATE ROOMS FOR LADIES. Hot and Cold Baths, Fire Escapes, etc. Within Five Minutes' Walk from Christchurch Railway Station. TARIFF: From 4/6 PER DIEM. 30/- PER WEEK. Comfort, Cleanliness, and Civility Guaranteed. Letters and Telegrams Receive prompt attention. TELEPHONE 747.



THE METROPOLITAN Grand Central Coffee Palace and Restaurant. CORNER OF DEVON & EGMONT STREETS, NEW PLYMOUTH. Within one minute's walk of Railway Station, Post Office and Banks. (Recognised as the Leading Unlicensed Hotel in Taranaki.) The above is specially adapted for the Convenience and Comfort of the Commercial and Social Travelling Public, and is every way equal to a First-class Hotel. lofty and airy bedrooms, Ladies' Ten Rooms, Drawing-room, Spacious Dining-room, Commercial Room, Hot, Cold, and Shower Baths, Convenient and Commodious Sample Rooms. THE KITCHEN IS UNDER AN EXPERIENCED CHEF. TERMS: Per Day, 4/6; Per Week, 23/-. ARROWSMITH, PROPRIETOR.