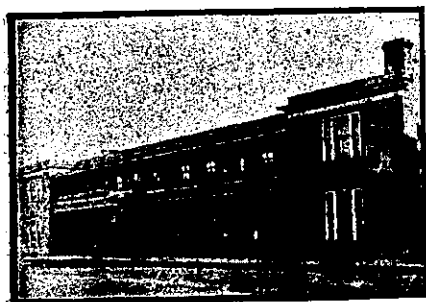


WELLINGTON—Continued.



EMPIRE HOTEL MASTERTON.

J. CRESS Proprietor. This popular house of call is under entirely new management, and is one of the most centrally situated hotels in Masterton.

FEILDING HOTEL KIMBOLTON ROAD, FEILDING.

Under Patronage of His Excellency Lord Ranfurly. This favourite hostelry has been renovated and refurnished throughout. Private and Public Drawing Rooms upstairs en suite.



THE CLUB HOTEL, CARTERTON.

Has been taken possession of by MR AND MRS R. BUCKERIDGE, Late of Martinborough. Who have obtained the Freehold of this Hostelry.

FOXTON FAMILY HOTEL, FOXTON

Excellent Accommodation for the Travelling Public at a Moderate Tariff. Best Wines, Spirits, Ales, etc. Good Billiard Table.

LEVIN HOTEL

(To which is attached the Horowhenua County Club and the Levin Aerated Water Factory.)

MARTON HOTEL, MARTON.

Excellent Accommodation for the Travelling Public at a Moderate Tariff. Best Wines, Spirits, Ales, etc. The Proprietor wishes to inform the travelling public that the above well and favourably known Hotel has recently been enlarged and renovated.

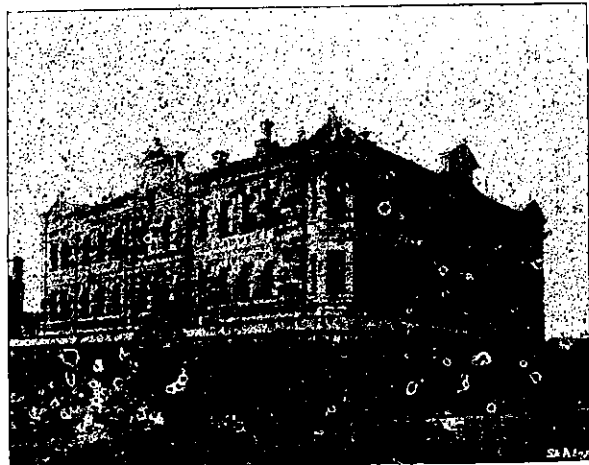
COCKAYNE'S LEVIATHAN,

MANCHESTER and ST. ASAPH STREETS, CHRISTCHURCH.

Visitors to Christchurch should secure accommodation at the Leviathan. It offers all the advantages of an up-to-date home, and is furnished throughout in such a manner as to provide the Best Accommodation for Boarders, Visitors, and Travellers.

PRIVATE ROOMS FOR LADIES. Hot and Cold Baths, Fire Escapes, etc. Within Five Minutes' Walk from Christchurch Railway Station.

TARIFF: From 4/6 PER DIEM. 30/- PER WEEK. Comfort, Cleanliness, and Civility Guaranteed. Letters and Telegrams Receive prompt attention. TELEPHONE 747.



WELLINGTON—Continued.

BARRETT'S NEW HOTEL, LAMBTON QUAY, WELLINGTON.

THIS Hotel has just been completed and furnished throughout in the best style, making it a hostelry second to none in the colony. Its close proximity to the wharf, trains, and trams renders it an excellent and convenient Hotel for visitors and travellers to be accommodated.

CENTRAL HOTEL, WELLINGTON

(Two Minutes walk from Queen's Wharf). A. M. GOW (late of Dunedin) Proprietor. ONLY BEST BRANDS OF LIQUOR KEPT MODERATE CHARGES.

DEVINE'S EMPIRE HOTEL, MAIN STREET, PALMERSTON NORTH.

Patrons can rely on being supplied with all leading brands of Whiskies, Wines, and Brandies. Special feature: First-class luncheon from 12 o'clock to 2 p.m. for One ...

IMPERIAL HOTEL, CUBA-STREET, WELLINGTON.

This hotel, just rebuilt and furnished in modern style, offers excellent accommodation, and the liquors are unsurpassed. J. N. JACKSON (late Empire Hotel, Petone) PROPRIETOR.

POST OFFICE HOTEL, WELLINGTON.

Best Dinner for One Shilling in the Antipodes. McCarthy's, Staple's, and Speight's Beer. E. WILSON Proprietor.

GRAND NATIONAL HOTEL, PETONE, WELLINGTON.

MR JOHN PYKE (late of the Cambridge and Imperial Hotels, Wellington) begs to notify his friends and the public generally that he has taken over this old-established and popular hostelry, which will be found replete with every modern convenience, and liquors of the best brands obtainable.

MARTON HOTEL, MARTON.

Excellent Accommodation for the Travelling Public at a Moderate Tariff. Best Wines, Spirits, Ales, etc. MRS R. ROBERTS (late of Palmerston North), Proprietress.

CLUB HOTEL, MASTERTON

The appointed house for the Commercial Travellers and Warehousemen's Association, Wellington, also Cook's Tourist Travellers. All Appointments up-to-date. A. C. SCRIMGEOUR Proprietor.

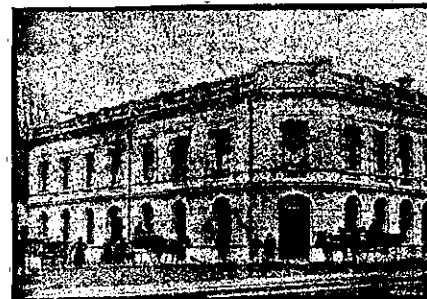
WELLINGTON—Continued.



NEW MASONIC HOTEL, CUBA-STREET, WELLINGTON

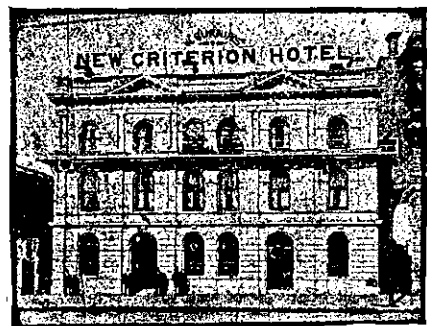
The Masonic is built with all the latest and safest fire escapes, iron balconies and stairs leading from every bedroom. The hotel is newly furnished throughout, and contains suites of rooms, including Private Sitting-rooms, Dining rooms, and Smoking rooms on each floor.

CHRISTCHURCH.



THE CARLTON HOTEL, NORTH BELT AND PAPANUI ROAD, CHRISTCHURCH.

F. DAVY Proprietor. This old-established Hotel containing 26 rooms, being recently re-built in brick and stone, offers special advantages to Tourists, Travellers, and others, who will find all the comforts of a home at this fine Hostelry.



NEW CRITERION HOTEL, GLOUCESTER STREET, CHRISTCHURCH.

Being now Thoroughly Complete, this is one of the best-appointed Houses in the City. Every room, including bedrooms, electrically lighted and newly furnished. Ample accommodation for Travellers, Tourists, and Families.

STOREY'S TERMINUS HOTEL

(Opposite Christchurch Railway Station.) LICENSEE .. F. W. MILLWARD. Visitors to this spacious hotel receive every possible attention and modern comfort. Letters and telegrams are promptly attended to. Telephone 795.

SPEIGHT'S PRIZE ALES ON DRAUGHT.

Special Arrangements made with Permanent Boarders and Theatrical Parties, etc. Tariff .. 8s per Day. £2 2s per Week.

CHRISTCHURCH—Continued.

RICHARDSON'S BRITISH HOTEL, LYTELTON.

The Leading Hotel of Lyttelton. Excellent Accommodation. Liberal Table. Hot, Cold and Shower Baths. Best Brands of Wines and Spirits and Dunedin Beer on tap. F. F. KEPPLER (late of Devanchelle's Bay) PROPRIETOR.

MASONIC HOTEL, CHRISTCHURCH.

VISITORS to above Hotel will find a comfortable HOME, with Moderate Tariff. EDWARD POWER, (Late Dunedin) Proprietor.

CHRISTCHURCH-DUNEDIN EXPRESS DINING-CARS.

T. FAIRHURST Caterer. Grills and Light Refreshments at all times on the Journey. All Fruits in Season of the Best Quality. Favourite Brands of Cigars, Cigarettes, and Tobacco.

THE GLADSTONE HOTEL, (Off Papanui Road), CHRISTCHURCH.

AN UP-TO-DATE HOUSE. Excellent Accommodation. Liquors of Special Quality and in Great Variety. H. PIPER PROPRIETOR.

HAWKE'S BAY PROVINCE.



CALEDONIAN HOTEL, HASTINGS-STREET, NAPIER.

A. C. BARNES Proprietor.

E. J. WARREN.

(Formerly of the Havelock and Taradale Hotels). HAS taken over the Albert Hotel, Hastings, which now replete with every comfort and convenience, and he will be glad to see all friends, both new and old.

PROVINCIAL HOTEL, CLIVE SQUARE, NAPIER.

J. W. McDUFF Proprietor. The above Hotel has been entirely rebuilt in brick, and furnished and fitted up in the latest and most up-to-date manner. Has fine rooms and well-ventilated bedrooms, with numerous sitting, smoking, and waiting rooms.

CAFE DE PARIS, DANNEVIRKE, NEARLY OPPOSITE TELEGRAPH OFFICE (LATE POST OFFICE BOARDING HOUSE).

MR E. Q. TATTERSALL desires to announce that he has taken over the above well-known premises (which have recently been enlarged and refurnished throughout), and trusts by keeping everything in an up-to-date style to merit a fair share of support.

COMMERCIAL HOTEL, WAIPAWA.

Private Suites of Apartments and every Convenience for the Accommodation of the public. WINES, SPIRITS & BEER of the Best Quality Only. A FIRST-CLASS BILLIARD TABLE. Good Stabling and Paddock Accommodation. W. FELLOW Proprietor.

THE METROPOLITAN Grand Central Coffee Palace and Restaurant. CORNER OF DEVON & EGMONT STREETS, NEW PLYMOUTH. (Recognised as the Leading Unlicensed Hotel in Taranaki.) The above is specially adapted for the Convenience and Comfort of the Commercial and Social Travelling Public and in every way equal to a First-class Hotel. TERMS: Per Day, 4/6; Per Week, 23/.