

AUCKLAND PROVINCE—Continued

STAR HOTEL
KARANGAHAPE ROAD, NEWTON.

Opposite Papanui Reservoir.

FINEST BRANDS OF BEERS, WINES
AND SPIRITS.

JAMES McLEOD Proprietor



CLARENDON HOTEL
CORNER OF
WAKEFIELD AND BUTLAND STREETS,
AUCKLAND.

First-class Luncheon from 12 to 2.
Good Accommodation for Travellers and Boarders.
Billiard Table. Hot and Cold Baths.
Mancock's XXXX A es. "Caed mille failthe."
PAT. QUINLAN Proprietor.



ALEXANDRA HOTEL
MANUKAU ROAD, PARNELL.

This well-built and admirably situated
Hotel is fitted up with all the latest
conveniences.
First-class Billiard Table and Large
Saloon.
Best Brands of Wine and Spirits only
kept.

J. R. D. BAKER Proprietor.



GRAND HOTEL
TE AROHA.

Directly opposite the Sanatorium and com-
manding the most Charming Prospect of the
Domain.

This New and Commodious Hotel is replete
with every convenience requisite to the comfort
of the travelling public.

First-class Cuisine, Hot, Cold, and Shower
Baths.

Coaches attend all trains.
Letters and telegrams promptly attended to.

E. W. SHAW Proprietor.
Late of Commercial Hotel Paeroa, and British
Hotel, Auckland.

ROYAL HOTEL
VICTORIA STREET, AUCKLAND.

J. MORRISON Proprietor.

TARIFF, from 8/6 per day.

The Farthest North
JOSEPH EVANS, JUNR.
PROPRIETOR

THE HOHOURA HOTEL
HOHOURA,
MANGONUI COUNTY.

Every Accommodation can be had here.

CHARGES MODERATE.
LIQUORS OF THE BEST.

Don't Forget—

Joseph Evans, Junr.
Proprietor.



TELEPHONE 490.

P.O. BOX 305.

CENTRAL HOTEL

VICTORIA STREET EAST, AUCKLAND.

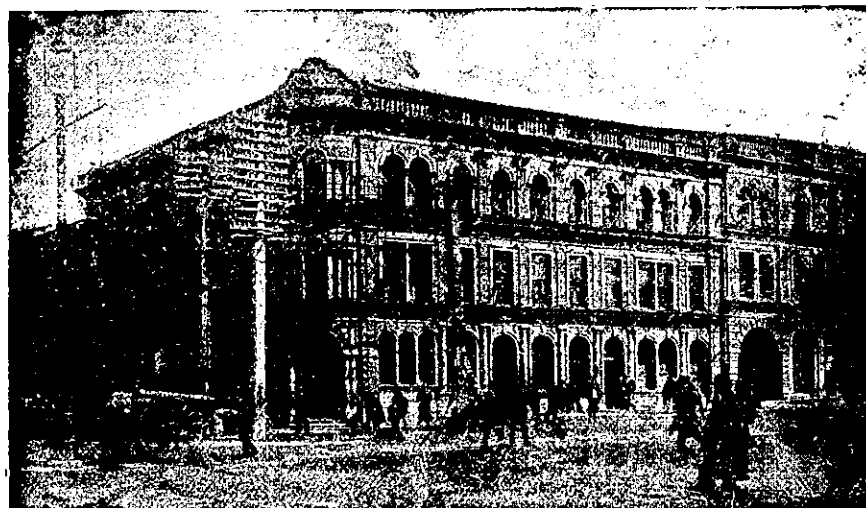
J. W. SPEERS Manager.
(Late of the Grand Hotel, Rotorua).



Kidd's Commercial Hotel

S. J. ATKINS, Proprietor.

SHORTLAND & HIGH STREETS.



WAITEMATA HOTEL

CORNER QUEEN & CUSTOM STREETS, AUCKLAND.

Close to the Wharf and Railway Station.

VISITORS WILL FIND EVERY COMFORT & CONVENIENCE.

JOHN ENDEAN, Proprietor.

TELEPHONE NO. 589.



HOBSON HOTEL
CORNER OF
HOBSON AND VICTORIA STS.
AUCKLAND.

Wines and Spirits of Best Quality.

M. FOLEY Proprietor



ROYAL GEORGE HOTEL
NEWMARKET.

CHRIS. LEEK Proprietor

Mr Chris. Leek begs to notify his numerous friends
that he has taken the above Hotel, which has been
thoroughly renovated, and will afford excellent accom-
modation for boarders and country visitors.
Buses and trams pass the door every three minutes.
Best Brands of Wines and Spirits kept.
Terms Moderate.

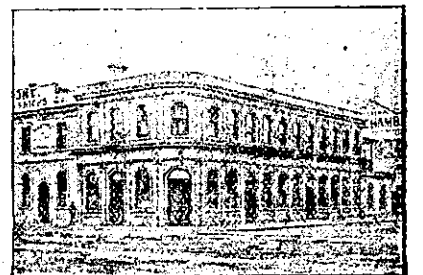


WHANGAREI HOTEL
WHANGAREI.

This fine House, just re-built in brick and furnished
in up-to-date style, now offers unrivalled accommodation
to the travelling public.

Sample Room. Hot and Cold Baths.
Two minutes walk from Saltwater Bathing Place.
Stabling Second to None.

Best Wines, Ales and Spirits Kept in Stock.
SAMUEL McMAHON Proprietor



BRITOMART HOTEL
Custom-street.

BEST WINES, SPIRITS AND ALES
KEPT.

W. J. BAKER Proprietor.



ELLERSLIE HOTEL, ELLERSLIE.

This Spacious and Comfortable Hotel
adjoins the Ellerslie Railway Station,
and has been thoroughly done up and
renovated, and is in first-class order.
Country Visitors and Boarders will find
every convenience, and their comfort
catered for in every way.

The Best Wines and Spirits kept.
Campbell, Ehrenfried and Co.'s Special
Brews always on hand.

A. J. J. MEYER Proprietor.

PAPAKURA HOTEL
PAPAKURA.

Notice to Cyclists, Footballers, and others.—Keep off
friend Thos. McEwin has taken over the above Hotel
and will be pleased to see all old faces. Splendid Accom-
modation and Guides. Large Rooms for use of Clubs.

THOS. McEWIN Proprietor