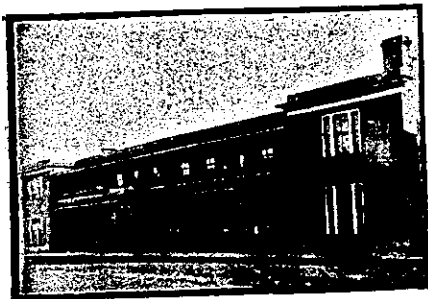


WELLINGTON—Continued.

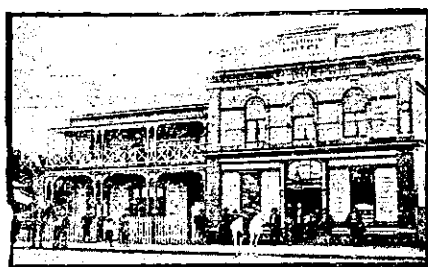


EMPIRE HOTEL MASTERTON.

J. CRESS ... Proprietor. This popular house of call is under entirely new management, and is one of the most centrally situated hotels in Masterton.

EMPIRE HOTEL, FEILDING.

MR J. WAREHAM, late of the Club Hotel, Stratford, has taken over the above Hotel, and has had the same thoroughly renovated and re-furnished throughout.



POST OFFICE HOTEL, FOXTON.

This Hotel, having just been Rebuilt and Refurnished throughout, now affords the Best of Accommodation for Travellers, etc.

ALBERT HOTEL, WILLIS STREET, WELLINGTON.

MR GEO. A. ALLEN Has pleasure in intimating that he has taken over the proprietorship of this well-known Commercial and Family Hotel.

LEVIN HOTEL

(To which is attached the Horowhenua County Club and the Levin Filtered Water Factory.)

D. HANNAN ... Proprietor.

The Proprietor wishes to inform the travelling public that the above well and favourably-known Hotel has recently been enlarged and renovated, making it now one of the Best Hotels in the North Island.

WELLINGTON—Continued.

BARRETT'S NEW HOTEL, LAMBTON QUAY, WELLINGTON.

THIS Hotel has just been completed and furnished throughout in the best style, making it a hostelry second to none in the colony.

J. J. KELLY ... Proprietor.

CENTRAL HOTEL, WELLINGTON

(Two Minutes walk from Queen's Wharf). A. M. GOW (late of Dunedin).....Proprietor ONLY BEST BRANDS OF LIQUOR KEPT MODERATE CHARGES.

DEVINE'S EMPIRE HOTEL, MAIN STREET, PALMERSTON NORTH.

Patrons can rely on being supplied with all leading Brands of Whiskies, Wines, and Brandies. Special feature: First-class luncheon from 12 o'clock to 2 p.m. for One ...

IMPERIAL HOTEL, CUBA-STREET, WELLINGTON.

This hotel, just rebuilt and furnished in modern style, offers excellent accommodation, and the liquors are unsurpassed.

J. N. JACKSON (late Empire Hotel, Petone) PROPRIETOR.

POST OFFICE HOTEL, WELLINGTON.

Best Dinner for One Shilling in the Antipodes.

McCarthy's, Staple's, and Speight's Beer.

E. WILSON - - Proprietor.

GRAND NATIONAL HOTEL, PETONE, WELLINGTON.

MR JOHN PYKE (late of the Cambridge and Imperial Hotels, Wellington) begs to notify his friends and the public generally that he has taken over this old-established and popular hostelry.

JOHN PYKE - - Proprietor.

MARTON HOTEL, MARTON.

Excellent Accommodation for the Travelling Public at a Moderate Tariff.

Best Wines, Spirits, Ales, etc.

MRS R. ROBERTS (late of Palmerston North), Proprietress.

Patronised by His Excellency the Governor.

CLUB HOTEL, MASTERTON

The appointed house for the Commercial Travellers and Warehousemen's Association, Wellington, also, Cook's Tourist Travellers.

A. C. SCRIMGEOUR ... Proprietor.

WELLINGTON—Continued.



NEW MASONIC HOTEL, CUBA-STREET, WELLINGTON.

The Masonic is built with all the latest and safest fire escapes, iron balconies and stairs leading from every bedroom. The hotel is newly furnished throughout.

MRS T. WHITE.....Proprietress.

CHRISTCHURCH.



THE CARLION HOTEL, NORTH BELT AND PAPANUI ROAD, CHRISTCHURCH.

F. DAVY.....Proprietor. This old-established Hotel, containing 26 rooms, being recently re-built in brick and stone, offers special advantages to Tourists, Travellers, and others.



NEW CRITERION HOTEL, GLOUCESTER-STREET, CHRISTCHURCH.

Being now Thoroughly Complete, this is one of the best-appointed Houses in the City. Every room, including bedrooms, electrically lighted and newly furnished.

W BURNIP, Owner and Licensee.

STOREY'S TERMINUS HOTEL

(Opposite Christchurch Railway Station.) LICENSEE .. F. W. MILLWARD.

Visitors to this spacious hotel receive every possible attention and modern comfort. Letters and telegrams are promptly attended to.

SPEIGHT'S PRIZE ALES ON DRAUGHT.

Special Arrangements made with Permanent Boarders and Theatrical Parties, etc.

Tariff .. 8s per Day £2 2s per Week.

CHRISTCHURCH—Continued.

RICHARDSON'S BRITISH HOTEL, LYTTLETON.

The Leading Hotel of Lyttelton. Excellent Accommodation. Liberal Table. Hot, Cold and Shower Baths.

F. F. KEPPLER (late of Devanahelle's Bay) PROPRIETOR.

MASONIC HOTEL, CHRISTCHURCH.

VISITORS to above Hotel will find a comfortable HOME, with Moderate Tariff.

EDWARD POWER, (Late Dunedin) Proprietor.

CHRISTCHURCH-DUNEDIN EXPRESS DINING-CARS.

T. FAIRHURST ... Caterer.

Grills and Light Refreshments at all times on the Journey.

All Fruits in Season of the Best Quality.

Favourite Brands of Cigars, Cigarettes, and Tobacco.

THE GLADSTONE HOTEL (Off Papanui Road), CHRISTCHURCH.

AN UP-TO-DATE HOUSE.

Excellent Accommodation. Liquors of Special Quality and in Great Variety.

I. PIPEB ..... PROPRIETOR

HAWKE'S BAY PROVINCE.



CALEDONIAN HOTEL, HASTINGS-STREET, NAPIER.

A. C. BARNES.....Proprietor

E. J. WARREN.

(Formerly of the Havelock and Taradale Hotels).

HAS taken over the Albert Hotel, Hastings, which now replete with every comfort and convenience, and he will be glad to see all friends, both new and old.

PROVINCIAL HOTEL, CLIVE SQUARE NAPIER.

J. W. McDUFF.....Proprietor

The above Hotel has been entirely rebuilt in brick, and furnished and fitted up in the latest and most up-to-date manner.

The Billiard Room is the Best in the District, fitted up with two first-class tables, and under the charge of a competent marker.

Best Brands of Wines, Spirits etc., Only Kept.

CAFE DE PARIS, DANNEVIRKE, NEARLY OPPOSITE TELEGRAPH OFFICE (LATE POST OFFICE BOARDING HOUSE).

MR E. Q. TATTERSALL desires to announce that he has taken over the above well-known premises (which have recently been enlarged and refurbished throughout).

First-class Accommodation offered to Boarders and the General Public. Baths—Hot, Cold, and Spray. Upstairs and Dining-Room under the supervision of Mrs TATTERSALL.

COMMERCIAL HOTEL, WAIPAWA

Private Suites of Apartments and every Convenience for the Accommodation of the public.

WINES, SPIRITS & BEER of the Best Quality Only.

A FIRST-CLASS BILLIARD TABLE.

Good Stabling and Paddock Accommodation.

W. FELLOW ..... PROPRIETOR

COCKAYNE'S LEVIATHAN,

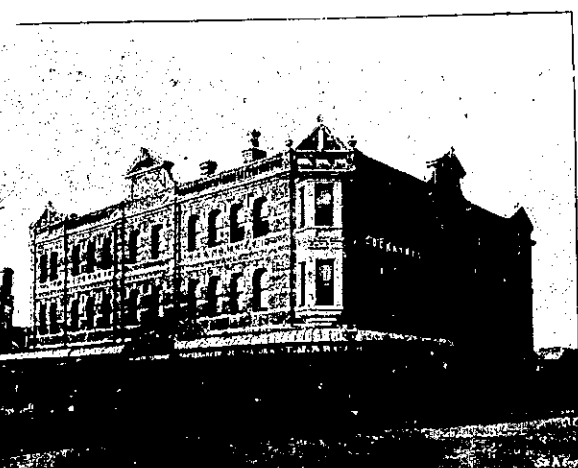
MANCHESTER and ST. ASAPH STREETS, CHRISTCHURCH.

Visitors to Christchurch should secure accommodation at the Leviathan. It offers all the advantages of an up-to-date home, and is furnished throughout in such a manner as to provide the Best Accommodation for Boarders, Visitors, and Travellers.

PRIVATE ROOMS FOR LADIES. Hot and Cold Baths, Fire Escapes, etc.

Within Five Minutes' Walk from Christchurch Railway Station.

TARIFF: From 4/6 PER DIEM. 30/- PER WEEK. Comfort, Cleanliness, and Civility Guaranteed. Letters and Telegrams Receive prompt attention. TELEPHONE 745.



THE METROPOLITAN Grand Central Coffee Palace and Restaurant CORNER OF DEVON & EGMONT STREETS, NEW PLYMOUTH Within one minute's walk of Railway Station, Post Office and Banks. (Recognised as the Leading Unlicensed Hotel in Taranaki.)