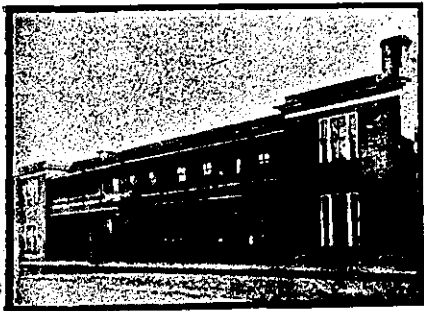


WELLINGTON—Continued.



EMPIRE HOTEL MASTERTON.

J. CRESS ... Proprietor. This popular house of call is under entirely new management, and is one of the most centrally situated hotels in Masterton.

EMPIRE HOTEL, FIELDING.

MR J. WAREHAM, late of the Club Hotel, Stratford, has taken over the above Hotel, and has had the same thoroughly renovated and re-furnished throughout.



POST OFFICE HOTEL, FOXTON.

This Hotel, having just been Rebuilt and Refurnished throughout, now affords the Best of Accommodation for Travellers, etc.

ALBERT HOTEL, WILLIS STREET, WELLINGTON.

MR GEO. A. ALLEN Has pleasure in intimating that he has taken over the proprietorship of this well-known Commercial and Family Hotel.

LEVIN HOTEL

(To which is attached the Horowhenua County Club and the Levin Aerated Water Factory.)

D. HANNAN ... Proprietor.

The Proprietor wishes to the travelling public that the above well and favourably-known Hotel has recently been enlarged and renovated, making it now one of the Best Hotels in the North Island.

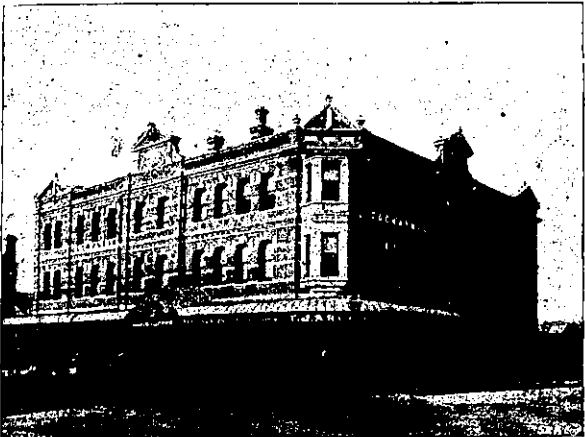
COCKAYNE'S LEVIATHAN,

MANCHESTER and ST. ASAPH STREETS, CHRISTCHURCH.

Visitors to Christchurch should secure accommodation at the Leviathan. It offers all the advantages of an up-to-date home, and is furnished throughout in such a manner as to provide the Best Accommodation for Boarders, Visitors, and Travellers.

PRIVATE ROOMS FOR LADIES. Hot and Cold Baths, Fire Escapes, etc.

TARIFF: 4/6 PER DIEM. 30/- PER WEEK. Comfort, Cleanliness, and Quality Guaranteed.



Patronised by His Excellency the Governor.

CLUB HOTEL, MASTERTON

The appointed house for the Commercial Travellers and Warehousemen's Association, Wellington, &c. All Tourist Travellers up-to-date.

A. C. SCRIMGEOUR ... Proprietor

CENTRAL HOTEL, WELLINGTON

(Two Minutes walk from Queen's Wharf). A. M. GOW (late of Dunedin) ... Proprietor ONLY BEST BRANDS OF LIQUOR KEPT MODERATE CHARGES.

KAITOKE REFRESHMENT ROOMS.

All trains remain at station to enable passengers to obtain refreshments. Fresh tea made for every train. Tea, Coffee, Sandwiches, Cakes, Confectionery. Best brands of Ales, Wines, Spirits, Cigars, and Cigarettes.

DEVINE'S EMPIRE HOTEL, MAIN STREET, PALMERSTON NORTH.

Patrons can rely on being supplied with all leading brands of Whiskies, Wines, and Brandies. Special feature: First-class luncheon from 12 o'clock to 2 p.m. for One ...

CHRISTCHURCH.

Where to Stay in Christchurch? STOREY'S TERMINUS HOTEL

(Opposite Christchurch Railway Station.) LICENSEE ... F. W. MILLWARD. Visitors to this spacious hotel receive every possible attention and modern comfort.

SPEIGHT'S PRIZE ALES ON DRAUGHT.

Special Arrangements made with Permanent Boarders and Theatrical Parties, etc. Tariff ... 8s per Day ... £2 2s per Week.



NEW CRITERION HOTEL, GLOUCESTER-STREET, CHRISTCHURCH.

Being now Thoroughly Complete, this is one of the best-appointed Houses in the City. Every room, including bedrooms, electrically lighted and newly furnished.

CHRISTCHURCH-DUNEDIN EXPRESS DINING-CAR.

T. FAIRHURST ... Caterer. Grills and Light Refreshments at all times on the Journey. All Fruits in Season of the Best Quality.

THE GLADSTONE HOTEL (Off Papanui Road), CHRISTCHURCH.

AN UP-TO-DATE HOUSE. Excellent Accommodation. Liquors of Special Quality and in Great Variety.

I. PIPER ... PROPRIETOR

RICHARDSON'S BRITISH HOTEL, LYTTELTON.

The Leading Hotel of Lyttelton. Excellent Accommodation. Liberal Table. Hot, Cold and Shower Baths.

F. F. KEPPLER (late of Devanchelle's Bay) PROPRIETOR.

MASONIC HOTEL, CHRISTCHURCH.

VISITORS to above Hotel will find a comfortable HOME, with Moderate Tariff. EDWARD POWER, (Late Dunedin) Proprietor.

HAWKE'S BAY PROVINCE.



CALEDONIAN HOTEL, HASTINGS-STREET, NAPIER.

A. C. BARNES ... Proprietor

MARINE PARADE PRIVATE HOTEL, NAPIER.

M. A. RICHARDS, Proprietress (Late of Cobles Palace, Wanganui). The above commodious Hotel has been completely renovated and re-furnished, and is now up-to-date in every particular.

STORTFORD LODGE HOTEL, HASTINGS.

CWEN NEWPORT, PROPRIETOR, (Late of Brighton, Nelson). Every convenience for the travelling and sporting public. 14 loose boxes.

PACIFIC HOTEL, HASTINGS.

A. ELLINGHAM (Late of Stortford Lodge Hotel). HAS taken over this well-known Hostelry, that has been presided over by Mr H. O. Caulton for the last twenty years.

WESTCOURT BOARDING HOUSE.

OPPOSITE GOVERNMENT LAWN, SHAKESPEARE ROAD. Under the Management of MRS. RICHARDSON, (Late 80, Marine Parade). This house has been thoroughly renovated, making it one of the most convenient Boarding Houses in Napier.

E. J. WARREN.

(Formerly of the Havelock and Taradale Hotels), HAS taken over the Albert Hotel, Hastings, which is now replete with every comfort and convenience.

THE MANGATERA HOTEL, CHARLES MELVILLE, PROPRIETOR.

This popular Hostelry has been thoroughly renovated, and patrons will find in it all the comforts of a home. The Best Brands of Wines, Ales, and Spirits only kept in stock.

CARLTON CLUB HOTEL, HASTINGS.

First-class Accommodation for Tourists' Families and Commercial Men. J. D. RIVERS, PROPRIETOR.

PROVINCIAL HOTEL, CLIVE SQUARE, NAPIER.

J. W. McDUFF ... PROPRIETOR. The above Hotel has been entirely rebuilt in brick, and furnished and fitted up in the latest and most up-to-date manner.

CAFE DE PARIS, DANNEVIRKE, NEARLY OPPOSITE TELEGRAPH OFFICE (LATE POST OFFICE BOARDING HOUSE).

MR E. Q. TATTERSALL well-known announces that he has taken over the above well-known premises (which have recently been enlarged and furnished throughout).

COMMERCIAL HOTEL, WAIPAWA

Private Suites of Apartments and every Convenience for the Accommodation of the public. WINES, SPIRITS & BEER of the Best Quality Only. A FIRST-CLASS BILLIARD TABLE.

UNDER THE PATRONAGE OF THE EARL OF RANDOLPH

FAVISTOCK HOTEL, WAIPUKURAU. Tourists, Commercial and Families will find this Hotel replete and most up-to-date.

WOODVILLE REFRESHMENT ROOMS

E. W. BUDDIOK ... PROPRIETOR. Mail Trains wait twenty minutes for Lunch. The Railway passengers, going either North or South, should be acquainted with the fact that at the Woodville Refreshment Rooms they can have a good Hot Luncheon.

RAILWAY HOTEL, HASTINGS.

PERCY MARTIN - Proprietor. First-class Accommodation to the Travelling Public. Wines and Spirits of the best brands. First-class Billiard Room.

TARANAKI PROVINCE

EMPIRE HOTEL, HAWERA (Corner of High and Princes Streets), MRS A. MAGUIRE ... Proprietress.

Good Stabling, Billiards, Bath Room. Wines, Beers and Spirits Unsurpassed. Mrs MAGUIRE wishes to draw the attention of the Auckland Public to the ONE SHILLING LUNCHEON provided. Tariff: 4/6 per day; only one price.

THE METROPOLITAN Grand Central Coffee Palace and Restaurant. CORNER OF DEVON & EGMONT STREETS, NEW PLYMOUTH. Within one minute's walk of Railway Station, Post Office and Banks. (Recognised as the Leading Unlicensed Hotel in Taranaki.)