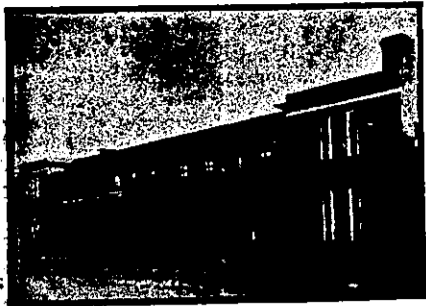


WELLINGTON—Continued.



EMPIRE HOTEL, MASTERTON.

J. CRESS Proprietor. This popular house of call is under entirely new management...

ALBERT HOTEL, WILLIS STREET, WELLINGTON.

G. A. ALLEN. Having taken over the above old-established Hotel, patrons may rely upon receiving every comfort and attention...

EMPIRE HOTEL, FIELDING.

MR J. WAREHAM, late of the Club Hotel, Stratford, has taken over the above Hotel, and has had the same thoroughly renovated...



POST OFFICE HOTEL, FOXTON.

This Hotel, having just been Rebuilt and Refurnished throughout, now affords the Best of Accommodation for Travellers, etc.

POST OFFICE HOTEL, (Opposite Post Office, Main Street, Pahiatua.)

T. HENLEY (late of Working Men's Club, Palmerston North), has taken over the above well-known Hostelry...

LEVIN HOTEL

(To which is attached the Horowhenua County Club and the Levin Aerated Water Factory.)

D. HANNAN Proprietor.

The Proprietor wishes to inform the travelling public that the above well and favourably-known Hotel has recently been enlarged and renovated...

KAITOKE REFRESHMENT ROOMS.

All trains remain at station to enable passengers to obtain refreshments. Fresh tea made for every train.

DEVINE'S EMPIRE HOTEL, MAIN STREET, PALMERSTON NORTH.

Patrons can rely on being supplied with all leading brands of Whiskies, Wines and Brandies.

Patronised by His Excellency the Governor.

CLUB HOTEL, MASTERTON

The appointed house for the Commercial Travellers and Warehousemen's Association, Wellington, also Cook's Tourist Travellers.

A. G. SCRIMGEOUR Proprietor

CENTRAL HOTEL

WELLINGTON

(Two Minutes walk from Queen's Wharf).

A. M. GOW (late of Dunedin) Proprietor

ONLY BEST BRANDS OF LIQUOR KEPT

MODERATE CHARGES.

CHRISTCHURCH.

Where to Stay in Christchurch?

STOREY'S TERMINUS HOTEL

(Opposite Christchurch Railway Station.)

LICENSEE F. W. MILLWARD.

Visitors to this spacious hotel receive every possible attention and modern comfort. Letters and telegrams are promptly attended to.

SPEIGHT'S PRIZE ALES ON DRAUGHT.

Special Arrangements made with Permanent Boarders and Theatrical Parties, etc.

Tariff 8s per Day £2 2s per Week.

NEW CRITERION HOTEL, GLOUCESTER-STREET, CHRISTCHURCH.

BEING now Thoroughly Complete, this is one of the best-appointed Houses in the City. Every room, including bedrooms, electrically lighted and newly furnished.

Special Arrangements for Theatrical Companies.

Liberal Cuisine, Choicest Liquors, Terms Moderate.

Night Porter. Telephone 904.

W. BURNIP, Owner and Licensee.

COOKAYNE'S LEVIATHAN HOTEL, CHRISTCHURCH.

This Magnificent Hotel is replete with all Modern Improvements, and contains 52 single and 20 double bedrooms, all of which are unusually airy and well-appointed.

Public and Private Sitting-Rooms.

Bathrooms and Lavatories fitted with Hot and Cold Water.

THE CUISINE IS IN CHARGE OF AN EXPERIENCED CHEF,

And will be found Equal to any in the Colony.

Private Dining-room for Ladies.

General Tariff on Application.

MRS COOKAYNE Proprietress.

CHRISTCHURCH-DUNEDIN EXPRESS DINING-CARS.

T. FAIRHURST Caterer.

Grills and Light Refreshments at all times on the Journey.

All Fruits in Season of the Best Quality.

Favourite Brands of Cigars, Cigarettes, and Tobacco.

THE GLADSTONE HOTEL (Off Papanui Road), CHRISTCHURCH.

AN UP-TO-DATE HOUSE.

Excellent Accommodation. Liquors of Special Quality and in Great Variety.

H. PIPER Proprietor

RICHARDSON'S BRITISH HOTEL, LYTTLETON.

The Leading Hotel of Lyttelton. Excellent Accommodation. Liberal Table.

Hot, Cold and Shower Baths.

Best Brands of Wines and Spirits and Dunedin Beer on tap.

F. F. KEPPLER (late of Devanahelle's Bay) Proprietor.

HAWKE'S BAY PROVINCE.

CALEDONIAN HOTEL

HASTINGS-STREET, NAPIER.

A. C. BARNES Proprietor



RAILWAY HOTEL, HASTINGS.

PERCY MARTIN - Proprietor.

First-class Accommodation to the Travelling Public.

Wines and Spirits of the best brands.

First-class Billiard Room.

RAILWAY HOTEL, HASTINGS.

PERCY MARTIN - Proprietor.

First-class Accommodation to the Travelling Public.

Wines and Spirits of the best brands.

First-class Billiard Room.

MARINE PARADE PRIVATE HOTEL, NAPIER.

M. A. RICHARDS, Proprietress

(Late of Coffee Palace, Wanganui).

The above commodious Hotel has been completely renovated and re-furnished, and is now up-to-date in every particular.

Within easy distance of Town and Wharf.

HEALTHIEST POSITION IN NAPIER.

Specially suitable to country people desirous of spending a holiday at the seaside.

First-class Accommodation at Moderate Charges.

Special Arrangements for Permanent Boarders.

Dark Room provided for Photographers.

UNION 12 to 2.

STORTFORD LODGE HOTEL, HASTINGS.

CWEN NEWPORT, PROPRIETOR,

Late of Brighton, Nelson.

Every convenience for the travelling and sporting public. 14 loose boxes.

Telegrams and letters receive prompt attention.

PACIFIC HOTEL, HASTINGS.

A. ELLINGHAM

(Late of Stortford Lodge Hotel),

HAS taken over this well-known Hostelry, that has been presided over by Mr H. O. Caulton for the last twenty years.

The Hotel will be re-furnished throughout and made thoroughly up-to-date as a Family and Commercial Hotel.

Splendid Loose-box Accommodation for Visiting Trainers.

Telephone Communication between Napier and Hastings.

All Telegrams carefully attended to.

ALF. ELLINGHAM Proprietor.

UNDER THE PATRONAGE OF HIS EXCELLENCY EARL OF RANFURLY.]

MASONIC HOTEL, DANNEVIRKE, H.B.

THE LEADING FAMILY AND COMMERCIAL HOTEL IN THE DISTRICT.

First-class Accommodation.

Nothing but the Best Brands of Wines and Spirits kept.

Speight's Dunedin Beer always on draught.

Commodious and well-lighted Sample Rooms.

Porter meets all trains. Night Porter in attendance.

Correspondence punctually attended to. P.O. Box 11.

WILLIAM LIGHT Proprietor.

WESTCOURT BOARDING HOUSE.

OPPOSITE GOVERNMENT LAWN, SHAKESPEARE ROAD.

Under the Management of

MRS. RICHARDSON,

Late 80, Marine Parade.

This house has been thoroughly renovated, making it one of the most convenient Boarding Houses in Napier.

PRIVATE BILLIARD TABLE.

Hot, Cold, and Shower Baths.

First-class Table. Lunch from 12 to 2. Dinner 6 p.m.

Terms on Application.

THE TROCADERO, STRATFORD

UNDER ENTIRELY NEW MANAGEMENT.

THE TROCADERO has been renovated and re-furnished throughout, and has every up-to-date convenience.

Suites of Rooms, Sitting and Commercial Rooms, Sample Rooms. Hot and Cold Baths, and every modern convenience.

The Cuisine is under the direction of an experienced Chef. Dinners from Noon to 2 p.m.

CHARGES MODERATE.

Telephone 51. C. H. PAYNTER, Proprietor.

E. J. WARREN.

(Formerly of the Havelock and Taradale Hotels),

HAS taken over the Albert Hotel, Hastings, which is now replete with every comfort and convenience, and he will be glad to see all friends, both new and old.

First-class Accommodation for Boarders and Travellers.

Terms Moderate. Luncheon 12 noon to 2 p.m. Rob-Johns' Prize Ale on draught.

Ward's, Speight's and Manning's in bottle. Nothing but Best Brands of Wines and Spirits stocked.

Telephone No. 11.

THE MANGATERA HOTEL, CHARLES MELVILLE, Proprietor.

This popular Hostelry has been thoroughly renovated, and patrons will find in it all the comforts of a home.

The Best Brands of Wines, Ales, and Spirits only kept in stock.

Special attention is given to the cuisine department, a capable assistant being in charge of the Dining-room.

CHARGES MODERATE.

CARLTON CLUB HOTEL, HASTINGS.

First-class Accommodation for Tourists' Families and Commercial Men.

J. D. RIVERS, PROPRIETOR.

PROVINCIAL HOTEL, CLIVE SQUARE NAPIER.

J. W. McDUFF Proprietor

The above Hotel has been entirely rebuilt in brick, and furnished and fitted up in the latest and most up-to-date manner.

Has fine roomy and well-ventilated bedrooms, with numerous sitting, smoking, and waiting rooms.

The Billiard Room is the Best in the District, fitted up with two first-class tables, and under the charge of a competent marker.

Best Brands of Wines, Spirits etc., Only Kept.

CAFE DE PARIS, DANNEVIRKE, NEARLY OPPOSITE TELEGRAPH OFFICE (LATE POST OFFICE BOARDING HOUSE).

MR E. Q. TATTERSALL desires to announce that he has taken over the above well-known premises (which have recently been enlarged and furnished throughout), and trusts by keeping everything in an up-to-date style to merit a fair share of support.

First-class Accommodation offered to Boarders and the General Public. Baths—Hot, Cold, and Spray.

Upstairs and Dining-Room under the supervision of Mrs TATTERSALL.

COMMERCIAL HOTEL, WAIPAWA. Private Suites of Apartments and every Convenience for the Accommodation of the public.

WINE, SPIRITS & BEER of the Best Quality Only.

A FIRST-CLASS BILLIARD TABLE.

Good Stabling and Paddock Accommodation.

W. PELLOW Proprietor

UNDER THE PATRONAGE OF THE EARL OF RANFURLY] DAVISTOCK HOTEL, WAIPUKURAU.

Tourists, Commercial and Families will find this Hotel replete and most up-to-date.

Good trout-fishing in Waipukurau and Tukituki Rivers. Shooting on lake three-quarters of a mile from Hotel. Stabling and Paddocks.

R. HUNT Proprietor.

WOODVILLE REFRESHMENT ROOMS

E. W. BUDDICK Proprietor.

Mail Trains wait twenty minutes for Lunch.

The Railway passengers, going either North or South, should be acquainted with the fact that at the Woodville Refreshment Rooms they can have a good Hot Luncheon.

Railway guards will inform the traveller how much time he will have at Woodville

TARANAKI PROVINCE

EMPIRE HOTEL, HAWREA (Corner of High and Princes Streets), MRS A. MAGUIRE Proprietress

Good Stabling, Billiards, Bath Room.

Wines, Beers and Spirits Unsurpassed.

Mrs MAGUIRE wishes to draw the attention of the Auckland Public to the ONE SHILLING LUNCHEON provided. Tariff: 4/6 per day; only one price.

THE TROCADERO, STRATFORD

UNDER ENTIRELY NEW MANAGEMENT.

THE TROCADERO has been renovated and re-furnished throughout, and has every up-to-date convenience.

Suites of Rooms, Sitting and Commercial Rooms, Sample Rooms. Hot and Cold Baths, and every modern convenience.

The Cuisine is under the direction of an experienced Chef. Dinners from Noon to 2 p.m.

CHARGES MODERATE.

Telephone 51. C. H. PAYNTER, Proprietor.

THE METROPOLITAN Grand Central Coffee Palace and Restaurant. CORNER OF DEVON & BSMONT STREETS, NEW PLYMOUTH. Within one minute's walk of Railway Station, Post Office and Banks. (Recognised as the Leading Unlicensed Hotel in Taranaki.)

