

NEW ZEALAND HOTEL DIRECTORY.—Continued.
PATRONISED BY HORSEMEN, CYCLISTS, GOLFERS, SPORTSMEN, AND THE THEATRICAL PROFESSION.

WELLINGTON PROVINCE—Continued

THE AL HOTEL
(Late Queen's),
LAMBTON QUAY, WELLINGTON.
A. GREENWOOD - PROPRIETOR.

A. GREENWOOD, having purchased the lease of the above hotel, has had the whole premises renovated, remodelled, decorated, and fitted up in the most modern style. Best Brands of Wines, Spirits, and Ales only kept.

RANFURLY HOTEL, WELLINGTON
Having bought the interests of the Ranfurly Hotel, Lambton Quay, the travelling and commercial public and families may rely upon the very best accommodation. Situation central. Every convenience and comfort.
Best Brands Guaranteed.
B. MCGUIRE - PROPRIETOR.

THE NAG'S HEAD HOTEL
Cuba Street, Wellington.
Near the Opera House; Electric Bell rings in bar three minutes prior to rising of curtain.
Best Brands of Ales, Wines, Spirits, etc., only kept in stock.
J. S. PALMER - PROPRIETOR.

MANCHESTER HOTEL, FEILDING
This Fine and most Conveniently-situated Hotel has undergone thorough renovation, and the proprietor is now in a position to offer Superior Accommodation at a most Reasonable Tariff.
All Liquors sold in this House are Warranted the Best.
D. P. BARRETT - PROPRIETOR.

IMPERIAL HOTEL
CUBA STREET, WELLINGTON.
Best Wines, Spirits, etc. Staples XXXX Ale on Draught. Trams pass door every 10 minutes.
J. G. PYKE - PROPRIETOR
(Late of the Cambridge Hotel).

CALEDONIAN HOTEL
W. J. WHITE - PROPRIETOR.
A1 BAR. A1 LANDLORD. TELEPHONE 774
BASIN RESERVE, WELLINGTON.

TERMINUS HOTEL
COURTENAY PLACE, WELLINGTON.
E. SULLIVAN, late of Pahiatua, has purchased the lease and goodwill of the above well-known establishment, and will be pleased to have a visit from his old friends. The hotel is in a convenient position to the city, trams passing every ten minutes. Wines, Ales, and Spirits of the Best Brands always to be had.
E. SULLIVAN - PROPRIETOR

ROYAL HOTEL, WELLINGTON
Almost opposite Thorndon Government Railway Station.
E. J. SEARL - PROPRIETOR.
ONE OF THE FINEST, MOST COMFORTABLE, AND CENTRALLY SITUATED HOTELS IN WELLINGTON, being close to both Railway Stations and within easy distance of Wharf.

This Hotel has been re-built and possesses EVERY MODERN APPLIANCE For Visitors' Comfort.
PRIVATE SUITES OF ROOMS FOR FAMILIES.
Cuisine under the personal supervision of a competent chef.

POST OFFICE HOTEL
Wellington.
Best Dinner for One Shilling in the Antipodes.
McCarthy's, Staple's, and Speight's Beer.
E. WILSON - PROPRIETOR.

NEWTOWN HOTEL, WELLINGTON
Having taken over the above Hotel, Mr P. W. CORBY (late of Prince of Wales Hotel) wishes to inform his customers and the public generally that he has thoroughly renovated the whole premises, and is now prepared to administer for their comfort. Best Brands of Wines, Ales, and Spirits only kept.
Telephone, No 488.



METROPOLITAN HOTEL
Molesworth Street, WELLINGTON.
WALTER KING - PROPRIETOR.
The above is situated within a few minutes' walk of the Government and Manawatu Railway Stations and Parliamentary Buildings. Visitors from the Country will receive every attention. Good Accommodation for Permanent Boarders. Liquors and Cigars of the Best Brands. Your patronage solicited. TERMS MODERATE.

ASSOCIATED HOTELKEEPERS
LABOUR EXCHANGE
AND REGISTRY OFFICE.
17, WILLIS STREET, WELLINGTON.
NOW OPEN.
Hotel Servants Supplied on the Shortest Notice.
T. A. KEEGAN,
Manager.

HAWKE'S BAY PROVINCE.
CALEDONIAN HOTEL, NAPIER
Under new management. Thoroughly renovated
SPLENDID ACCOMMODATION
At a Moderate Tariff.
BEST BRANDS OF LIQUORS.
B. DENNHEY - PROPRIETOR
(Late of Danevirke).

COMMERCIAL HOTEL, PAHIATUA
This Hotel is the Leading Commercial Hotel of Pahiatua.
It is most Centrally and Conveniently Situated, and offers every inducement to those visiting the district.
THOS. BROWN - PROPRIETOR.

CLUB HOTEL, DANEVIRKE
Closest Hotel to Railway Station, and offering SPLENDID ACCOMMODATION TO TRAVELLERS AND THE COMMERCIAL PUBLIC.
BEST BRANDS OF LIQUORS KEPT
J. HALLIGAN - PROPRIETOR.

PROVINCIAL HOTEL
Corner Emerson St. and Clive Sq.,
NAPIER.
J. W. McDUFF - PROPRIETOR
(Late of Wanganui).

PACIFIC HOTEL, HASTINGS
H. O. CAULTON - PROPRIETOR.
BEST BRANDS OF WINES, SPIRITS, AND MALT LIQUORS.
Apothecaries, Puriri Litchis, and Potash Waters.
VERY SUPERIOR STABLING. TERMS, CASH



MARINE PARADE HOTEL, NAPIER
MR F. J. GLEESON (late of Greymouth) has taken over the above popular hostelry, and trusts, by strict attention to the requirements of visitors, to merit their patronage. Large and lofty Rooms. Private Apartments for families desiring to benefit by a seaside residence. Wines, Spirits, Ales, the best procurable.
Moderate Tariff.
F. J. GLEESON - PROPRIETOR.

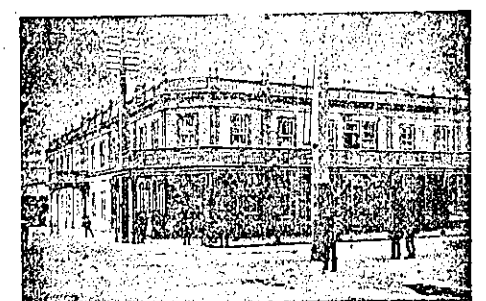
CLUB HOTEL WOODVILLE
This Hotel affords First-class Accommodation to Travellers and Families.
Commodious and Well-lighted Sample Rooms.
Allcock's A1 Billiard Table.
First-class Stabling Accommodation. Horses and Buggies on Hire.
P. M. POOL - PROPRIETOR.

CENTRAL HOTEL, NAPIER
CHAS. G. F. EAGAR - PROPRIETOR
(Late of Wellington and Dunedin).
The above Hotel is one of the Most Convenient and Up-to-Date Houses in Hawke's Bay.
Telegrams Promptly Attended To.
ONLY FIRST-CLASS LIQUORS DISPENSED.

UNION HOTEL, PORT AHURIKI
(Waghorne Street).
T. H. GLASS - PROPRIETOR.
Travellers by Rail or Boat Specially Catered for.
Best Brands of Wines and Spirits.
Newbigin's XXXX Ale always on Draught.
SPORTING REVIEW filed.

RUTLAND HOTEL
(Late Empire),
MAIN STREET, PAHIATUA.
EXCELLENT ACCOMMODATION FOR THE TRAVELLING PUBLIC.
BEST BRANDS OF WINES AND SPIRITS
E. S. WARD - PROPRIETOR.

THE OCCIDENTAL HOTEL
HASTINGS ST., NAPIER.
MR. J. O. MASON, so long and favorably known as proprietor of the Marine Parade, has taken over the above Commodious and Conveniently-situated Hostelry, where
NOTHING WILL BE WANTING TO ENSURE THE COMFORT OF GUESTS.



CRITERION HOTEL, NAPIER
Under New Management. Refurnished and Thoroughly Renovated.
FIRST-CLASS ACCOMMODATION FOR TOURISTS, FAMILIES, AND COMMERCIAL MEN.
FINE SAMPLE ROOMS.
S. CHARLTON - PROPRIETOR
(Late of Railway Hotel, Hastings).

COMMERCIAL HOTEL
Waipawa.
JULL AND OAKENFULL - Proprietors.

TARANAKI PROVINCE.
COUNTY HOTEL
Stratford.
J. HOLDCROFT - Proprietor.
RAILWAY HOTEL
Inglewood.
H. J. JULIAN - Proprietor.

OKATO HOTEL, TARANAKI
J. T. DIAMOND - PROPRIETOR.
Midway Hotel for Visitors Going to Maori Village, Parihaka.

KNOWLES' HOTEL, OPUNAKE
(Taranaki).
This well and favorably known house has Every Comfort and Convenience for the Public.
Good Beds, Capital Table.
Best Spirits, Wines, and Beers.
Moderate Tariff.
First class Billiard Table.

VILLAGE INN, BELL BLOCK
J. GOODWIN - PROPRIETOR.
This well-known and favorite house is on the main road between New Plymouth and Waitara. Nothing but the best of liquors retailed.
Telephone connection.

WAITARA HOTEL
D. LESLIE - PROPRIETOR
(Late of Hawera).
GOOD ACCOMMODATION.

Best Brands of Spirits, Wines, and Beers Retailed. Commercial Travellers' Sample Rooms. Hotel is Conveniently Situated close to Shipping and Freezing Works.
CHARGES MODERATE.

EMPIRE HOTEL, HAWERA
(Corner of High and Princes Streets).
FRED. S. COOPER - PROPRIETOR
(Late Thistle Inn, Wellington).
Good Stabling, Billiards, Bath Room, and Sample Rooms (3).
Unedid, Christchurch, and Local Beer on Draught. Wines and Spirits Unsurpassed. F.S.C. wishes to draw the attention of the Auckland Public to the ONE SHILLING LUNCHEON provided. Tariff: 4/6 per day; only one price.

RAYNES' HOTEL
(Late Tisch's)
NEAREST HOTEL TO RAILWAY STATION,
NEW PLYMOUTH.
Situated in one of the most picturesque parts of New Plymouth, overlooking the sea. The extensive balcony commands a splendid view of the sea coast and town. All the advantages of quiet home life. Largely patronised by tourists and visitors. CHARGES MODERATE.
AUDUS RAYNES - PROPRIETOR
(Late Imperial Hotel, New Plymouth).

BREAKWATER HOTEL
New Plymouth.
A. G. BISHOP - PROPRIETOR.
The house, newly erected, has a fine healthy situation near the sea and close to the harbour, and is a favorite resort for seaside visitors. Excellent Accommodation. Visitors off steamers in harbor receive every attention. Wines and Spirits, best brands. First-class Billiard Table.
Telephone 152.

BRIDGE HOTEL, WAITARA
S. R. FAIRWEATHER - PROPRIETOR.
A Modern House, replete with every convenience.
ACCOMMODATION UNRIVALLED.
Excellent Table. Billiard Table in charge of competent marker. Conveyances for the Travelling Public. SAMPLE ROOMS for Commercial Travellers. The Best of Wines, Spirits, and Beers retailed.

TARANAKI HOTEL
Brougham Street,
NEW PLYMOUTH.
Good Table and Accommodation. Best Brands of Spirits and Beer always retailed.
Close to Railway Station and Town Hall.
R. H. CAMPBELL - PROPRIETOR.

WANGANUI.
THE NEWMARKET HOTEL
WANGANUI.
W. F. STUART - PROPRIETOR
(Late of Hastings).

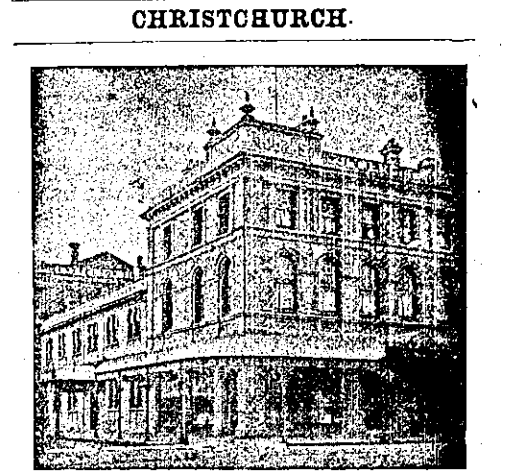
Having taken over the above Hotel patrons will find the best all-round accommodation, and can depend on the best quality of liquors being kept.
CRITERION HOTEL
Wanganui.
JOE CODY - PROPRIETOR
(Late of Wellington).

FOSTER'S HOTEL
Taupo Quay, Wanganui
(opposite Town Bridge).
W. H. G. FOSTER - PROPRIETOR.

PROVINCIAL HOTEL
Wanganui.
W. R. TUOHY - PROPRIETOR.

RAILWAY HOTEL,
Turakina.
J. W. PROCTER - PROPRIETOR.
First-class Stabling.

THE RUTLAND HOTEL
Wanganui, N.Z.
PERCY HERMAN - PROPRIETOR
(Late Club Hotel, Palmerston North).



MASONIC HOTEL
Corner of Colombo and Gloucester Streets,
CHRISTCHURCH.
W. JAMES - PROPRIETOR.
Visitors to the above hotel will find it furnished in up-to-date style and with every modern convenience. Luggage Express will meet every Train.

COKE'S FAMILY HOTEL
MANCHESTER ST., CHRISTCHURCH, N.Z.
Good Accommodation for Tourists. Splendid Suites of Apartments for Families. A Specially Furnished Drawing-room for Lady Visitors.
Telegrams and Letters with regard to Accommodation Promptly Attended to.

Booking Office for Cassidy's West Coast Coaches
PROPRIETOR - J. HATFIELD.

CRITERION HOTEL
NEXT THEATRE ROYAL,
CHRISTCHURCH.
Best Beer, Wines, and Spirits Only Kept.
GOOD ACCOMMODATION.
Special Attention given to Theatre-goers during the intervals.
W. BURNIP - PROPRIETOR.