

NEW ZEALAND HOTEL DIRECTORY.

WELLINGTON PROVINCE—Continued.

RANFURLY HOTEL, WELLINGTON
Having bought the interests of the Ranfurly Hotel, Lambton Quay, the travelling and commercial public and families may rely upon the very best accommodation. Situation central. Very convenience and comfort.
Best Brands Guaranteed
B. McGUIRE - PROPRIETOR.

POST OFFICE HOTEL
Wellington.
Best Dinner for One Shilling in the Antipodes.
McCarthy's, Staple's, and Speight's Beer.
E. WILSON - PROPRIETOR.

NATIONAL HOTEL
LAMBTON QUAY, WELLINGTON.
GOOD TABLE. BEST BRANDS OF LIQUORS IN STOCK. TERMS MODERATE.
ALFRED COLES - PROPRIETOR.

THE NAG'S HEAD HOTEL
Cuba Street, Wellington.
Near the Opera House; Electric Bell rings in bar three minutes prior to rising of curtain.
Best Brands of Ales, Wines, Spirits, etc., only kept in stock.
J. S. PALMER - PROPRIETOR.

NEWTOWN HOTEL, WELLINGTON
Having taken over the above Hotel, Mr P. W. COBBY (late of Prince of Wales Hotel) wishes to inform his customers and the public generally that he has thoroughly renovated the whole premises, and is now prepared to administer for their comfort. Best Brands of Wines, Ales, and Spirits only kept.
Telephone, No. 488.

ASSOCIATED HOTELKEEPERS
LABOUR EXCHANGE
AND REGISTRY OFFICE.
17, WILLIS STREET, WELLINGTON.
NOW OPEN.

Hotel Servants Supplied on the Shortest Notice.
T. A. KEEGAN,
Manager.

OCCIDENTAL HOTEL
MASTERTON.

STAPLE'S SPARKLING ALES } On Draught
SPEIGHT'S DUNEDIN ALES }
Only Best Brands of Liquors Kept.

EXCELLENT CUISINE.
TERMS, 8s PER DIEM
MRS L. ROSS - PROPRIETRESS.

MANCHESTER HOTEL, FEILDING
This Fine and most Conveniently-situated Hotel has undergone thorough renovation, and the proprietor is now in a position to offer Superior Accommodation at a most Reasonable Tariff.
All Liquors sold in this House are Warranted the Best.
D. P. BARRETT - PROPRIETOR.

FEILDING HOTEL
KIMBLTON ROAD, FEILDING.
This favourite hostelry has been renovated and refurnished throughout. Private and Public Drawing Rooms upstairs en suite. First-class Billiard Room. The most commodious Sample Rooms between Wellington and Wanganui. The Cuisine is under the supervision of an experienced cook. Noted for best Wines, Spirits, and Beers of any house on the Coast. The Feilding Club have rooms at the above Hotel.
Superior stable accommodation, with groom in charge.
MARTHA HASTIE - Proprietress.
W. DICKSON - Manager.

HAWKE'S BAY PROVINCE.

CALEDONIAN HOTEL, NAPIER
Under new management. Thoroughly renovated
SPLENDID ACCOMMODATION
At a Moderate Tariff.
BEST BRANDS OF LIQUORS.
B. DENNEHEY - PROPRIETOR
(Late of Danevirke).

COMMERCIAL HOTEL, PAHIATUA
This Hotel is the Leading Commercial Hotel of Pahiatua.
It is most Centrally and Conveniently Situated, and offers every inducement to those visiting the district.
THOS. BROWN - PROPRIETOR.

CUB HOTEL, DANEVIRKE
Nearest Hotel to Railway Station, and offering SPLENDID ACCOMMODATION TO TRAVELLERS AND THE COMMERCIAL PUBLIC.
BEST BRANDS OF LIQUORS KEPT
J. HALLIGAN - PROPRIETOR.

CLARENDON CLUB HOTEL
Opposite G.P.O., Napier.
T. PEDDIE - Proprietor.

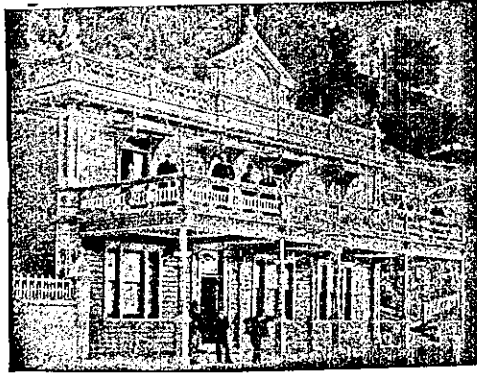
COMMERCIAL HOTEL
Waipawa.
JULL AND OAKENFULL - Proprietors.

PACIFIC HOTEL, HASTINGS
H. O. CAULTON - PROPRIETOR.

BEST BRANDS OF WINES, SPIRITS, AND MALT LIQUORS.
Apolinaris, Puriri, Lithia, and Potash Waters.
VERY SUPERIOR STABLING. TERMS, CASH

RUTLAND HOTEL
(Late Empire),
MAIN STREET, PAHIATUA.

EXCELLENT ACCOMMODATION FOR THE TRAVELLING PUBLIC.
BEST BRANDS OF WINES AND SPIRITS
E. S. WARD - PROPRIETRESS.



MARINE PARADE HOTEL, NAPIER
MR. F. J. GLERSON (late of Greynouth) has taken over the above popular hostelry, and trusts, by strict attention to the requirements of visitors, to merit their patronage. Large and lofty Rooms. Private Apartments for families desiring to benefit by a seaside residence. Wines, Spirits, Ales, the best procurable. Moderate Tariff.
F. J. GLERSON - PROPRIETOR.



CRITERION HOTEL, NAPIER
Under New Management. Refurnished and Thoroughly Renovated.
FIRST-CLASS ACCOMMODATION FOR TOURISTS, FAMILIES, AND COMMERCIAL MEN.
FINE SAMPLE ROOMS.
S. CHARLTON - PROPRIETOR
(Late of Railway Hotel, Hastings).

THE OCCIDENTAL HOTEL
HASTINGS ST., NAPIER.

MR. J. C. MASON, so long and favorably known as proprietor of the Marine Parade, has taken over the above Commodious and Conveniently-situated Hostelry, where
NOTHING WILL BE WANTING
TO ENSURE THE COMFORT OF
GUESTS.

PROVINCIAL HOTEL
Corner Emerson St. and Clive Sq.,
NAPIER.

J. W. McDUFF - PROPRIETOR
(Late of Wanganui).

CENTRAL HOTEL, NAPIER
CHAS. G. F. EAGAR - PROPRIETOR
(Late of Wellington and Dunedin).

The above Hotel is one of the Most Convenient and Up-to-Date Houses in Hawke's Bay.
Telegrams Promptly Attended To.

ONLY FIRST-CLASS LIQUORS
DISPENSED.

UNION HOTEL, PORT AHURIRI
(Waghorne Street).
T. H. GLASS - PROPRIETOR.
Travellers by Rail or Boat Specially Catered for.
Best Brands of Wines and Spirits.
Newbigin's XXXX Ale always on Draught.
SPORTING REVIEW filed.

TARANAKI PROVINCE.

OKATO HOTEL, TARANAKI
J. T. DIAMOND - PROPRIETOR.

Midway Hotel for Visitors Going to Maori Village, Paribaka.

RAYNES
TERMINUS HOTEL
(Late Tisch's)
NEAREST HOTEL TO RAILWAY STATION,
NEW PLYMOUTH.

Situated in one of the most picturesque parts of New Plymouth, overlooking the sea. The extensive balcony commands a splendid view of the sea coast and town. All the advantages of quiet home life. Largely patronised by tourists and visitors. CHARGES MODERATE.

AUDUS RAYNES - PROPRIETOR
(Late Imperial Hotel, New Plymouth).

WAITARA HOTEL
D. LESLIE - PROPRIETOR
(Late of Hawera).

GOOD ACCOMMODATION.
Best Brands of Spirits, Wines, and Beers Retailled. Commercial Travellers' Sample Rooms. Hotel is Conveniently Situated close to Shipping and Freezing Works.
CHARGES MODERATE.

BREAKWATER HOTEL
New Plymouth.
A. G. BISHOP - PROPRIETOR.

The house, newly erected, has a fine healthy situation near the sea and close to the harbour, and is a favorite resort for seaside visitors. Excellent Accommodation. Visitors off steamers in harbor receive every attention. Wines and Spirits, best brands. First-class Billiard Table. Telephone 152.

COUNTY HOTEL
Stratford.
J. HOLDCROFT - PROPRIETOR.

RAILWAY HOTEL
Inglewood.
H. J. JULIAN - PROPRIETOR.

TARANAKI HOTEL
Brougham Street,
NEW PLYMOUTH.

Good Table and Accommodation. Best Brands of Spirits and Beer always retailled.
Close to Railway Station and Town Hall.

R. H. CAMPBELL - PROPRIETOR.

KNOWLES' HOTEL, OPUNAKE
(Taranaki).

This well and favorably known house has Every Comfort and Convenience for the Public. Good Beds, Capital Table.
Best Spirits, Wines, and Beers.
Moderate Tariff.
First class Billiard Table.

BRIDGE HOTEL, WAITARA
S. R. FAIRWEATHER - PROPRIETOR.

A Modern House, replete with every convenience.
ACCOMMODATION UNRIVALED.

Excellent Table. Billiard Table in charge of competent marker. Conveyances for the Travelling Public. SAMPLE ROOMS for Commercial Travellers. The Best of Wines, Spirits, and Beers retailled.

EMPIRE HOTEL, HAWERA
(Corner of High and Princes Streets).

FRED. S. COOPER - PROPRIETOR
(Late Thistle Inn, Wellington).

Good Stabling, Billiards, Bath Room, and Sample Rooms (3).
Dunedin, Christchurch, and Local Beer on Draught. Wines and Spirits Unsurpassed. F.S.C. wishes to draw the attention of the Auckland Public to the ONE SHILLING LUNCHEON provided. Tariff: 4/6 per day; only one price.

WANGANUI.

THE NEWMARKET HOTEL
WANGANUI.

W. P. STUART - PROPRIETOR
(Late of Hastings).

Having taken over the above Hotel patrons will find the best all-round accommodation, and can depend on the best quality of liquors being kept.

CRITERION HOTEL
Wanganui.

JOE CODY - PROPRIETOR
(Late of Wellington).

FOSTER'S HOTEL
Taupo Quay, Wanganui
(nearly opposite Town Bridge).

W. H. G. FOSTER - PROPRIETOR.

PROVINCIAL HOTEL
Wanganui.

W. R. TUCK - PROPRIETOR.

RAILWAY HOTEL, Turakina.

J. W. PROCTER - PROPRIETOR.
First-class Stabling.

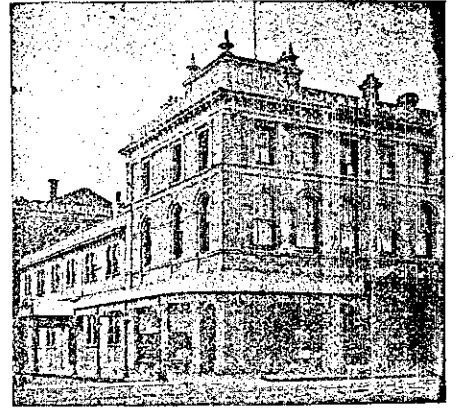
THE RUTLAND HOTEL
Wanganui, N.Z.

PERCY HERMAN - PROPRIETOR
(Late Club Hotel, Palmerston North).

CHRISTCHURCH.

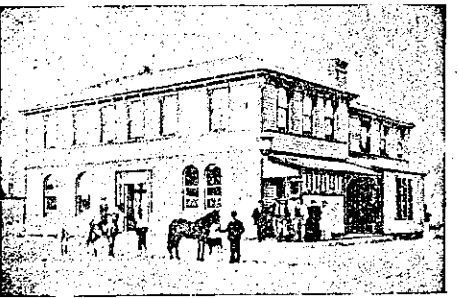
HIS LORDSHIP'S HOTEL
135, LICHFIELD ST., CHRISTCHURCH
(Next Wilson's Saleyards).

E. HELMLING - PROPRIETOR.
GIVE IT A TRIAL.



MASONIC HOTEL
Corner of Colombo and Gloucester Streets,
CHRISTCHURCH.

W. JAMES - PROPRIETOR.
Visitors to the above hotel will find it furnished in up-to-date style and with every modern convenience. Luggage Express will meet every Train.



SANDRIDGE HOTEL

SYDENHAM, CHRISTCHURCH.
J. KENNEDY - PROPRIETOR.
Splendid Accommodation for Families, Tourists, and Travellers. Don't Forget to call in passing through. Trams every hour up to 10.30 p.m.



OCCIDENTAL HOTEL

LATIMER SQ., CHRISTCHURCH.
This Hotel is most pleasantly situated in its own grounds, and offers Splendid Accommodation for Tourists, Families, and the Travelling Public. Wines and Spirits of the Best Brands only kept. Hot, Cold, and Shower Baths. Private Suites of Apartments.
H. FLEMING - PROPRIETOR.
Telephone, 344. P.O. Box, 144A.

COKER'S FAMILY HOTEL
MANCHESTER ST., CHRISTCHURCH, N.Z.

Good Accommodation for Tourists. Splendid Suites of Apartments for Families. A Specially Furnished Drawing-room for Lady Visitors.

Telegrams and Letters with regard to Accommodation Promptly Attended to.

Booking Office for Cassidy's West Coast Coaches

PROPRIETOR - J. HATFIELD.

CRITERION HOTEL

NEXT THEATRE ROYAL,
CHRISTCHURCH.

Best Beer, Wines, and Spirits Only Kept.

GOOD ACCOMMODATION.

Special Attention given to Theatre-goers during the intervals.

W. BURNIP - PROPRIETOR.