

NEW ZEALAND HOTEL DIRECTORY.

WELLINGTON PROVINCE—Continued.

RANFURLY HOTEL, WELLINGTON
Having bought the interests of the Ranfurly Hotel, Lambton Quay, the travelling and commercial public and families may rely upon the very best accommodation. Situation central. Every convenience and comfort.
Best Brands Guaranteed.
B. MCGUIRE - PROPRIETOR.

POST OFFICE HOTEL
Wellington.
Best Dinner for One Shilling in the Antipodes.
McCarthy's, Staple's, and Speight's Beer.
E. WILSON - Proprietor.

NATIONAL HOTEL
LAMBTON QUAY, WELLINGTON.
GOOD TABLE. BEST BRANDS OF LIQUORS IN STOCK. TERMS MODERATE.
ALFRED COLES - PROPRIETOR.

THE NAG'S HEAD HOTEL
Cuba Street, Wellington.
Near the Opera House; Electric Bell rings in bar three minutes prior to rising of curtain.
Best Brands of Ales, Wines, Spirits, etc., only kept in stock.
J. S. PALMER - PROPRIETOR.

ASSOCIATED HOTELKEEPERS
LABOUR EXCHANGE
AND REGISTRY OFFICE.
17, WILLIS STREET, WELLINGTON.
NOW OPEN.

Hotel Servants Supplied on the Shortest Notice.
T. A. KEEGAN,
Manager.

OCCIDENTAL HOTEL
MASTERTON.
STAPLE'S SPARKLING ALES } On Draught
SPEIGHT'S DUNEDIN ALES }
Only Best Brands of Liquors Kept.
EXCELLENT CUISINE.
TERMS, 8s PER DIEM
MRS L. ROSS - PROPRIETRESS.

MANCHESTER HOTEL, FEILDING
This Fine and most Conveniently-situated Hotel has undergone thorough renovation, and the proprietor is now in a position to offer Superior Accommodation at a most Reasonable Tariff.
All Liquors sold in this House are Warranted the Best.
D. P. BARRETT - PROPRIETOR.

FEILDING HOTEL
KIMBOLTON ROAD, FEILDING.
This favourite hostelry has been renovated and refurnished throughout. Private and Public Drawing Rooms upstairs en suite. First-class Billiard Room. The most commodious Sample Rooms between Wellington and Wanganui. The Cuisine is under the supervision of an experienced cook. Noted for best Wines, Spirits, and Beers of any house on the Coast. The Feilding Club have rooms at the above Hotel.
Superior stable accommodation, with groom in charge.
MARTHA HASTIE - Proprietress.
W. DICKSON - Manager.

HAWKE'S BAY PROVINCE.

CALEDONIAN HOTEL, NAPIER
Under new management. Thoroughly renovated
SPLENDID ACCOMMODATION
At a Moderate Tariff.
BEST BRANDS OF LIQUORS.
B. DENNEHEY - PROPRIETOR
(Late of Danevirke).

COMMERCIAL HOTEL, PAHIATUA
This Hotel is the Leading Commercial Hotel of Pahiataua.
It is most Centrally and Conveniently Situated, and offers every inducement to those visiting the district.
THOS. BROWN - PROPRIETOR.

CUB HOTEL, DANEVIRKE
nearest Hotel to Railway Station, and offering
SPLENDID ACCOMMODATION TO TRAVELLERS
AND THE COMMERCIAL PUBLIC.
BEST BRANDS OF LIQUORS KEPT
J. HALLIGAN - PROPRIETOR.

CLARENDON CLUB HOTEL
Opposite G.P.O., Napier.
T. PEDDIE - Proprietor.

COMMERCIAL HOTEL
Waipawa.
JULL AND OAKENFULL - Proprietors.

PACIFIC HOTEL, HASTINGS
H. O. CAULTON - PROPRIETOR.
BEST BRANDS OF WINES, SPIRITS, AND MALT LIQUORS.
Apolinaris, Puriri, Lithia, and Potash Waters.
VERY SUPERIOR STABLING. TERMS, CASH

RUTLAND HOTEL
(Late Empire),
MAIN STREET, PAHIATUA.
EXCELLENT ACCOMMODATION FOR THE TRAVELLING PUBLIC.
BEST BRANDS OF WINES AND SPIRITS
E. S. WARD - PROPRIETRESS.



MARINE PARADE HOTEL, NAPIER
JOHN MASON (many years in the Club Hotel, Masterton, and Empire Hotel, Wellington), has taken over this popular hostelry, and hopes, by strict attention to the wants of his patrons, to merit a full share of support. The Furnishings are all New, and the rooms large and lofty.
PRIVATE ROOMS FOR FAMILIES wishing to benefit by residence alongside the seashore. The utmost comfort at Moderate Cost.
The wines, Spirits, and Ales are the best procurable.
JOHN C. MASON - PROPRIETOR.



CRITERION HOTEL, NAPIER
Under New Management. Refurnished and Thoroughly Renovated.
FIRST-CLASS ACCOMMODATION FOR TOURISTS, FAMILIES, AND COMMERCIAL MEN.
FINE SAMPLE ROOMS.
S. CHARLTON - PROPRIETOR
(Late of Railway Hotel, Hastings).

TARANAKI PROVINCE.

OKATO HOTEL, TARANAKI
J. T. DIAMOND - PROPRIETOR.
Midway Hotel for Visitors Going to Maori Village, Parihaka.

RAYNES'
TERMINUS HOTEL
(Late Tisch's)
NEAREST HOTEL TO RAILWAY STATION,
NEW PLYMOUTH.

Situated in one of the most picturesque parts of New Plymouth, overlooking the sea. The extensive balcony commands a splendid view of the sea coast and town. All the advantages of quiet home life. Largely patronised by tourists and visitors. CHARGES MODERATE.

AUDUS RAYNES - PROPRIETOR
(Late Imperial Hotel, New Plymouth).

WAITARA HOTEL
D. LESLIE - PROPRIETOR
(Late of Hawera).

GOOD ACCOMMODATION.
Best Brands of Spirits, Wines, and Beers Retailed. Commercial Travellers' Sample Rooms. Hotel is Conveniently Situated close to Shipping and Freezing Works
CHARGES MODERATE.

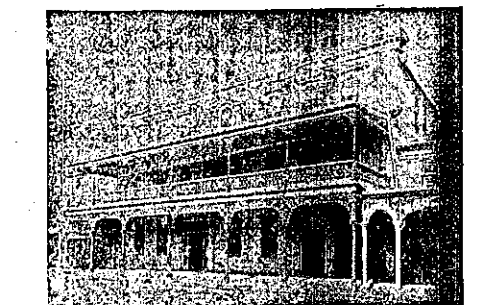
BREAKWATER HOTEL
New Plymouth.
A. G. BISHOP - PROPRIETOR.
The house, newly erected, has a fine healthy situation near the sea and close to the harbour, and is a favorite resort for seaside visitors. Excellent Accommodation. Visitors off steamers in harbor receive every attention. Wines and Spirits, best brands. First-class Billiard Table. Telephone 152.

COUNTY HOTEL
Stratford.
J. HOLDCROFT - Proprietor.

RAILWAY HOTEL
Inglewood.
H. J. JULIAN - Proprietor.

TARANAKI HOTEL
Brougham Street,
NEW PLYMOUTH.
Good Table and Accommodation. Best Brands of Spirits and Beer always retailed. Close to Railway Station and Town Hall.
R. H. CAMPBELL - PROPRIETOR.

KNOWLES' HOTEL, OPUNAKE
(Taranaki).
This well and favorably known house has Every Comfort and Convenience for the Public. Good Beds, Capital Table.
Best Spirits, Wines, and Beers.
Moderate Tariff.
First-class Billiard Table.



CRITERION HOTEL
NEW PLYMOUTH.
Under new management. Remodified, Refurnished, and thoroughly Renovated. Letters and Telegrams receive immediate attention.

WANGANUI.

THE NEWMARKET HOTEL
WANGANUI.
W. P. STUART - PROPRIETOR
(Late of Hastings).
Having taken over the above Hotel patrons will find the best all-round accommodation, and can depend on the best quality of liquors being kept.

CRITERION HOTEL
Wanganui.
JOE CODY - Proprietor
(Late of Wellington).

FOSTER'S HOTEL
Taupo Quay, Wanganui
(nearly opposite Town Bridge).
W. H. G. FOSTER - Proprietor.

PROVINCIAL HOTEL
Wanganui.
W. R. TUCK - Proprietor.

RAILWAY HOTEL,
Turakina.
J. W. PROCTER - Proprietor.
First-class Stabling.

THE RUTLAND HOTEL
Wanganui, N.Z.
PERCY HERMAN - Proprietor
(Late Club Hotel, Palmerston North).

PALMERSTON NORTH.

MASONIC HOTEL
PALMERSTON NORTH.
P. L. HARNETT - PROPRIETOR.
Situation of this hotel is within a minute's walk of Railway Station, and near Show Grounds and Racecourse. Special Terms made for Boarders and Visitors on a lengthened stay. Hot, Cold, and Shower Baths. FIRST-CLASS LOOSE BOXES.
NOTE.—Hot Suppers on arrival of Night Trains.

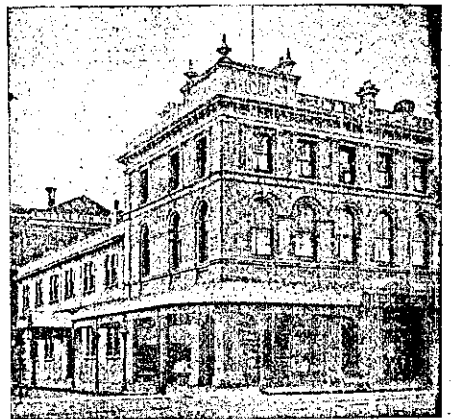
CLARENDON HOTEL
PALMERSTON NORTH.

This Hotel (the largest in Palmerston) offers all the Comforts of a Home at a most REASONABLE TARIFF.

WINES, SPIRITS, ALES, ETC., THE BEST PROCURABLE.
Letters and Telegrams promptly attended to.
E. CRAWFORD - PROPRIETRESS.

CHRISTCHURCH.

HIS LORDSHIP'S HOTEL
135, LICHFIELD ST., CHRISTCHURCH
(Next Wilson's Saleyards).
E. HELMLING - PROPRIETOR.
GIVE IT A TRIAL.



MASONIC HOTEL
Corner of Colombo and Gloucester Streets,
CHRISTCHURCH.
W. JAMES - PROPRIETOR.
Visitors to the above hotel will find it furnished in up-to-date style and with every modern convenience. Luggage Express will meet every Train.



SANDRIDGE HOTEL
SYDENHAM, CHRISTCHURCH.
J. KENNEDY - PROPRIETOR.
Splendid Accommodation for Families, Tourists, and Travellers. Don't Forget to call in passing through. Trams every hour up to 10.30 p.m.



OCCIDENTAL HOTEL
LATIMER SQ., CHRISTCHURCH.
This Hotel is most pleasantly situated in its own grounds, and offers Splendid Accommodation for Tourists, Families, and the Travelling Public. Wines and Spirits of the Best Brands only kept. Hot, Cold, and Shower Baths. Private Suites of Apartments.
H. LEMING - PROPRIETOR.
Telephone, 344. P.O. Box, 144A.

COKE'S FAMILY HOTEL
MANCHESTER ST., CHRISTCHURCH, N.Z.

Good Accommodation for Tourists. Splendid Suites of Apartments for Families. A Specially Furnished Drawing-room for Lady Visitors.

Telegrams and Letters with regard to Accommodation Promptly Attended to.

Booking Office for Cassidy's West Coast Coaches
PROPRIETOR - J. HATFIELD.

CRITERION HOTEL
NEXT THEATRE ROYAL,
CHRISTCHURCH.

Best Beer, Wines, and Spirits Only Kept.
GOOD ACCOMMODATION.

Special Attention given to Theatre-goers during the intervals.

W. BURNIP - PROPRIETOR.