

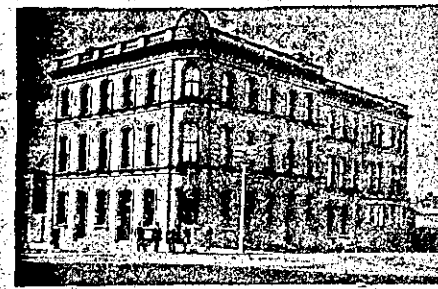
**THAMES HOTEL**  
CORNER OF  
QUEEN AND CUSTOM STREETS, AUCKLAND.

Commercial and Family Hotel. First-class Accommodation. Day and Night Porter. Terms Moderate. Best Wines and Spirits kept. Telephone No. 369.  
**E. LUKS** Proprietress



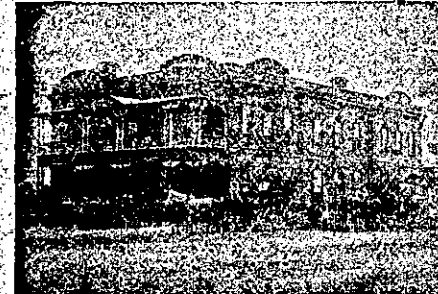
**ROB ROY HOTEL**  
FRANKLIN ROAD, AUCKLAND.

Best Brands of Wines and Spirits. Hancock's Ales. Splendid Accommodation for Boarders. Billiards. Hot, Cold, and Shower Baths.  
**W. REGAN** Proprietor



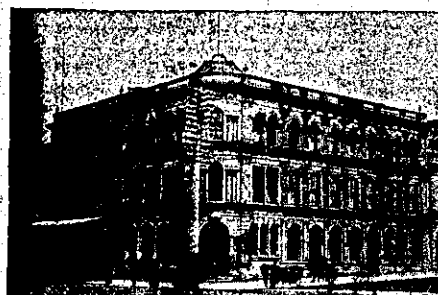
**PRINCE ARTHUR HOTEL**  
CORNER OF  
WELLESLEY AND HOBSON STREETS, AUCKLAND

First-class Accommodation. Hydraulic Lift for the use of Visitors. Wines and Spirits of the very best.  
**D. NORDEN** Proprietor



**CRITERION HOTEL, PAEROA**  
EDWIN BASTINGS ... PROPRIETOR.

Hot, Cold, and Shower Baths. Commodious and well-lighted Sample Rooms. Reading, Smoking, and Billiard Rooms. The Cuisine under superintendence of a thoroughly competent chef. Wines, Spirits, Cigars, etc., of the Best Quality Only. Coaches meet trains and boats at all hours. Letters and telegrams receive prompt attention.



**WAITEMATA HOTEL**  
CORNER OF  
QUEEN AND CUSTOMS STREETS, AUCKLAND.

All home comforts. First-class Wines and Spirits. Good Beds. Meals at all hours. Night Porter in attendance. Telephone No. 689.

**JOHN ENDEAN** Proprietor



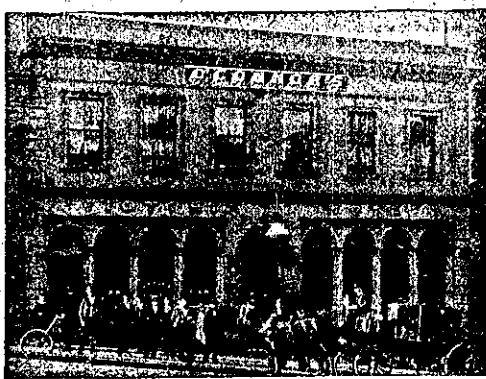
**CLARENDON HOTEL**  
CORNER OXFORD TERRACE & WORCESTER STREET,  
THE MOST CENTRALLY-SITUATED AND COMFORTABLE HOTEL IN  
CHRISTCHURCH.

A thoroughly good Cook in charge of the kitchen. The Wines, Spirits, and Ales are the best that can be purchased.  
**MRS ALLEN** PROPRIETRESS.

**VICTORIA HOTEL**

VICTORIA STREET, AUCKLAND.

FIRST-CLASS ACCOMMODATION  
FOR VISITORS.



SPLENDID BILLIARD TABLE  
AND APPOINTMENTS.

WINES AND SPIRITS OF THE BEST BRANDS.

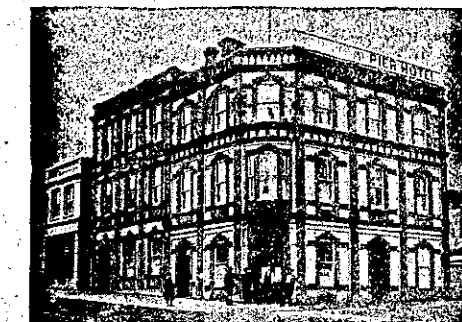
**T. B. O'CONNOR** Proprietor.



**CLARENDON HOTEL**  
CORNER OF  
WAKEFIELD AND RUTLAND STREETS, AUCKLAND

First-class Luncheon from 12 to 2. Good Accommodation for Travellers and Boarders. Billiard Table. Hot and Cold Baths. Hancock's XXXX Ales. 'Caed mille fallthe.'

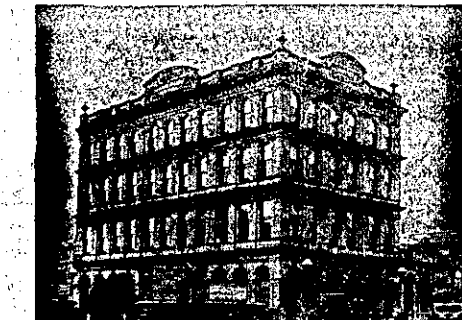
**WILLIAM LYNCH** Proprietor



**PIER HOTEL**  
ALBERT STREET, AUCKLAND.

The above hotel is within two minutes' walk of Railway Station and Wharf. None but the best Wines and Spirits kept in stock; also Dunedin and local Beer on tap. This well-known commodious Hotel has just been thoroughly renovated and newly furnished throughout. Every comfort afforded the travelling public.

**GEORGE LORAM** Proprietor

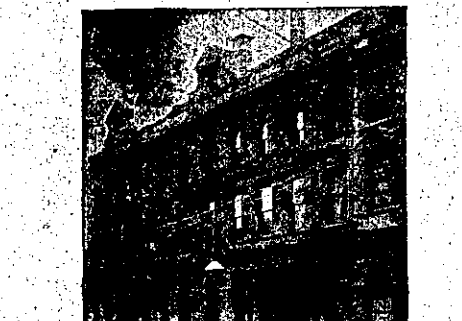


**WAVERLEY HOTEL**  
QUEEN STREET, AUCKLAND.

Near Railway Station, Tram Terminus, the Wharf, and Bus Stands

First-class Table d'Hote. Conveyance meets Steamers and Trains. Tariff: 7s per day; £2 2s per week. Telephone 370.

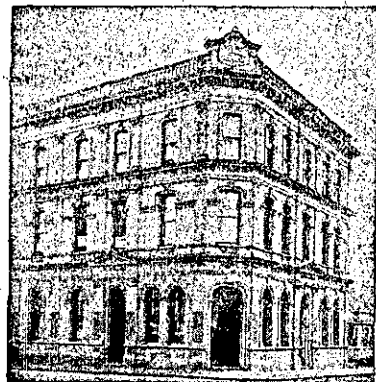
**JOSEPH McRAE** Proprietor



**IMPERIAL HOTEL**  
PORT STREET, AUCKLAND.

A First-class Family and Commercial Hotel convenient to all public offices and places of amusement. Letters and Telegrams will receive prompt attention. Telephone Exchange. Sample Rooms. Private Bar. Thos. Cook & Son's Coupons accepted.

**W. H. PEARCE** Proprietor and Manager



**ALEXANDRA HOTEL**  
CORNER OF  
CHAPEL AND DURHAM STREETS, AUCKLAND

**H. H. DYER** Proprietor



**EMPIRE HOTEL**  
CORNER OF  
VICTORIA AND NELSON STREETS.

Commercial and Family Hotel. First-class Accommodation. Day and Night Porter. Terms Moderate. Best Wines and Spirits kept. First-class Billiard Table.

**D. STEWART** Proprietor.



**COROMANDEL HOTEL**  
COROMANDEL.

Good Sample Room. Night Porter. Telegraph communication will receive the proprietor's personal attention. Lunch at 1 p.m. Dinner at 6 p.m.

**JAMES ROLLESTON** Proprietor  
Late of Hikurangi Hotel, Hikurangi.



**ROYAL HOTEL, THAMES**

This Leading and Old-established House is replete with every modern convenience, being situated close to Wharf and Booking Offices for Coaches. Adjoining the hotel and fronting the sea beach a Special Cottage of twenty rooms is set apart for accommodation of Tourists and Ladies. Every attention given to telegrams and letters. The cuisine under the charge of an experienced French chef. Splendid Sample Rooms and Billiard Table. Wines, Liqueurs, etc., finest quality only. Night Porter in attendance. Terms Moderate. P.O. Box 32. Telephone, 17.

**W. J. BRAY** Proprietor.



**OHAEAWAI HOTEL, OHAEAWAI**

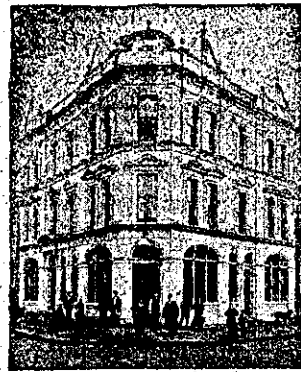
The undersigned begs to inform the Travelling Public that a new, large, commodious Hotel, replete with all the most modern conveniences, has been erected at the junction of Kaitoke and Waimate Roads, where they can rely upon receiving every comfort of a first-class Hotel at Moderate Rates. Billiards. Best Wines and Spirits only kept. Campbell and Ehrenfried's XXXX Beer on draught. First-class stable accommodation.

**S. F. HEDLUND** Proprietor.



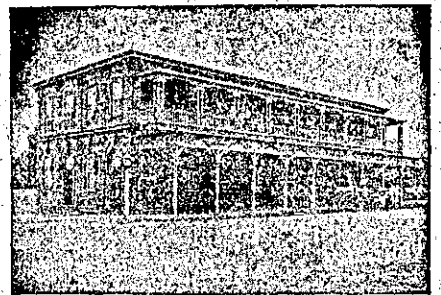
**CRITERION HOTEL**  
NEW PLYMOUTH.

Under new management. Remodelled, Refurnished, and thoroughly Renovated. Letters and Telegrams receive immediate attention.



**MARKET HOTEL**  
AUCKLAND.

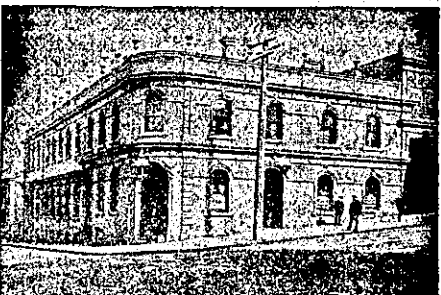
**A. R. DUNN** Proprietor.



**FAMILY HOTEL**  
(Opposite Domain), WHITAKER ST., TE AROHA.

This house has just been built, is directly opposite and commands a first-class view of the Domain and picturesque surroundings. The furniture is also brand new and of the latest design. Campbell and Ehrenfried's Priza Beer on draught and in bottles. Wines and Spirits of the Best Brands Only. Best Table in the Town.

**P. O'MEAGHER** Proprietor  
(Late of Lake Hotel, Takapuna).



**ROYAL MAIL HOTEL**  
VICTORIA STREET, AUCKLAND.

A Family and Commercial Hotel. Billiard Room. Sample Rooms. Night Porter in attendance.

**ROBERT SCOTT** Proprietor.

**RAYNES' TERMINUS HOTEL**  
(Late Tisch's)

NEAREST HOTEL TO RAILWAY STATION,  
NEW PLYMOUTH.

Situated in one of the most picturesque parts of New Plymouth, overlooking the sea. The extensive balcony commands a splendid view of the sea coast and town. All the advantages of quiet home life. Largely patronised by tourists and visitors. CHARGES MODERATE.

**AUDUS RAYNES** Proprietor  
(Late Imperial Hotel, New Plymouth).