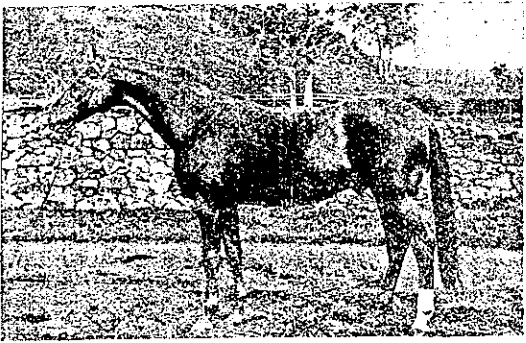


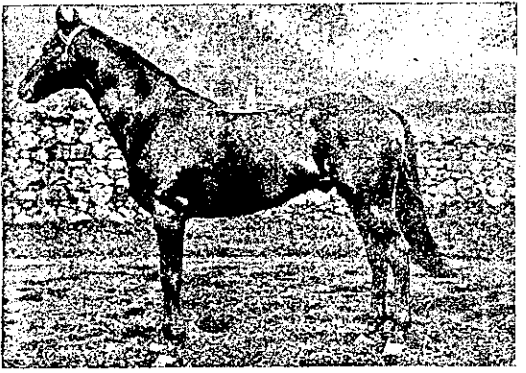
WELLINGTON PARK STUD
STALLIONS FOR SEASON 1897.

The undermentioned Thoroughbred Stallions will stand at Wellington Park :-



ST. LEGER (IMP.)

By Doncaster (Derby winner) out of Atlantis, by Thormanby (Derby winner)-Hurricane (One Thousand winner), by Wild Dayrell (Derby Winner). He is undoubtedly New Zealand's champion stallion, and in great favour with racing men from one end of the colony to the other.



CUIRASSIER

By Musket (imp.)-Fralty, by Goldsbrough-Flora McIvor, by New Warrior (imp.)-Io, by Sir Hercules. CUIRASSIER is full brother to the great sire Trenton. While on the turf CUIRASSIER ran second to Manton in the Hawke's Bay Guineas (beaten a head) and won the Great Northern Derby (beating Manton, Raglan, Kilda, etc., in the fast time of 2min 40sec).

CASTOR (imp.) and HOTCHKISS full for 1897.

Grazing in first-class Paddocks at 2s 6d per week. Every care taken, but no responsibility incurred. Further particulars may be obtained from JERRY KENNELLY, Stud Groom, Wellington Park, Or at the STUD OFFICE, Durham Street East, Auckland.

ST. LEGER (Imp.), 1881

Genealogical chart for ST. LEGER (Imp.), 1881, showing lineage from ATLANTIS (Imp.), 1867 and DONCASTER, 1870. Includes names like HURRICANE, THORMANBY, MARI GOLD, STOCKWELL, and various offspring.

CUIRASSIER, 1885

Genealogical chart for CUIRASSIER, 1885, showing lineage from FRALTY and MUSKET (Imp.), 1887. Includes names like FLORA McIVOR, GOLDSBOROUGH, DAUGHTER OF, 1857, and TOXOPHILITE, 1855.

HARRY ELLISON, COMMISSION AGENT, NO. 6, COOMBES' ARCADE, QUEEN STREET, AUCKLAND

WAVERLEY HOTEL, QUEEN ST., AUCKLAND. Near Railway Station, Tram Terminus, The Wharf, and 'Bus Stands.

FIRST-CLASS TABLE D'HOTE.

CONVEYANCE MEETS STEAMERS AND TRAINS

TARIFF: 7s per day, £2 2s per week.

JOSEPH MCRAE ... PROPRIETOR (Telephone 370).

THE BANK HOTEL, MANNERS ST., WELLINGTON. Centrally Situated. Excellent Accommodation. Best of Wines and Spirits.

E. F. SCHOLEFIELD - PROPRIETOR.

EMPIRE HOTEL, TIMARU THOS. BURNS - PROPRIETOR.



First-class Accommodation for Tourists, Families, and Commercial Men.

THAMES HOTEL, QUEEN STREET (CLOSE TO WHARF). EVERY CONVENIENCE, combined with Civility and Comfort, for Country Visitors and Boarders.

EHRENFRIED'S SPARKLING ALE ON DRAUGHT.

BEST BRANDS ONLY OF WINES AND SPIRITS.

Night Porter in Attendance.

COKER'S FAMILY HOTEL, MANCHESTER ST., CHRISTCHURCH, N.Z. Good Accommodation for Tourists. Splendid Suites of Apartments for Families. A Specially Furnished Drawing-room for Lady Visitors.

Telegrams and Letters with regard to Accommodation Promptly Attended to.

Booking Office for Cassidy's West Coast Coaches PROPRIETOR - J. HATFIELD.

CALEDONIAN HOTEL, A. I. MASTERS - PROPRIETOR. All Bar. All Landlord. Telephone 774. BASIN RESERVE, WELLINGTON.

BRITISH HOTEL, CORNER OF QUEEN AND DURHAM STS., AUCKLAND. Only the Best Brands of Wines and Spirits kept in Stock.

S. COOMBE - PROPRIETOR (Late of Thames Hotel).

CENTRAL HOTEL, CORNER OF VICTORIA AND HIGH STS., AUCKLAND. This House has all the necessary appointments of a First-class Hotel.

THE CUISINE IS EQUAL TO ANYTHING IN THE CITY.

TWO FIRST-CLASS BILLIARD TABLES.

COMMERCIAL TARIFF.

B. C. ROBERTS ... PROPRIETOR. Many years of the Albert and Royal Mail Hotels.

WINDSOR CASTLE HOTEL, BRIDGE STREET, NELSON. The Sporting House of Nelson. Liquors of the best. Charges moderate. Hogg's Celebrated Ales on Draught.

GEO. T. MENARY - PROPRIETOR. ROYAL HOTEL, FRANKLIN ROAD, AUCKLAND. BEST BRANDS OF WINES AND SPIRITS.

HANCOCK'S ALES.

SPLENDID ACCOMMODATION FOR BOARDERS.

BILLIARDS.

HOT COLD, AND SHOWER BATHS.

W. REGAN - PROPRIETOR.

OCCIDENTAL HOTEL, VULCAN LANE, AUCKLAND.

THE SPORTING RENDEZVOUS

J. W. RUSSELL - PROPRIETOR.

WANTED OLD FRIENDS TO CALL AND SEE BEN CURTIS AT HIS CASKET TATTERSALL'S CIGAR DIVAN RATTRAY STREET, DUNEDIN, Where one and all can get a First-class Cigar.

FOOTBALL! FOOTBALL! FOOTBALL!

We have just received a specially fine assortment of Footballs, etc., among which are several new lines.

The GRASSHOPPER KIA ORA is a specially good six-seam ball, and is used in all principal matches in England and the Colonies.

The ECLIPSE MATCH eight-seam ball is one of the best manufactured, and should prove to be a favourite with the Rugby players, as the shape and quality is all that can be desired.

The ATHLETIC MATCH six-seam ball was used in several of the principal matches last season, and proved a perfect ball in every respect.

Also exposed for sale a specially good lot of Cheaper Balls, sizes from 1 to 5, Bladders, Pumps, Shin-guards, Head and Ear Guards, etc.

Inspection invited.

H. E. PARTRIDGE & CO. Queen Street, Auckland.

TOMATO SAUCE IS THE BEST.

RAINBOW'S SARSAPARILLA Is the Best Brand and Quality in the Market.

FACTORY - CHRISTCHURCH, NEW ZEALAND.