

# My Lady's Bower.

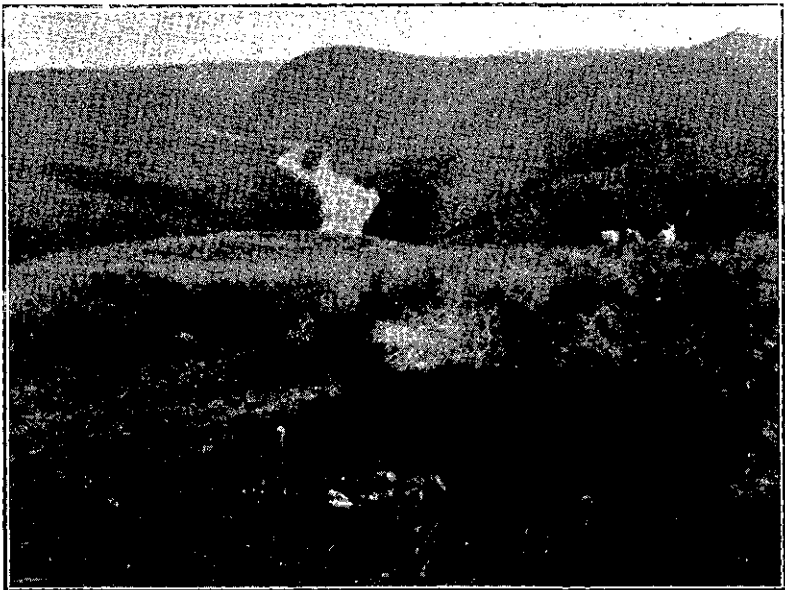
BY ALMA.

Lady readers are invited to discuss current topics in these pages, suggest subjects for discussion, and also to contribute photographic studies on any subject of interest. Contributions should be addressed: "Editor My Lady's Bower, New Zealand Illustrated Magazine," and should arrive early in the month. In all cases where stamps are enclosed for the purpose photos will be returned.

## OUR GIRLS.

**I**N a recent number, the question of culture in New Zealand Girls was touched upon. A contributor has very kindly sent an article on the University Extension Movement in Britain, which will be read with great interest by all who take note of the many ways in which the influence of women may benefit. All New Zealanders, who have become acquainted with the admirable text books of the University Extension Series, will not be

slow to remark that if such lectures could be given in our colony, much good would surely accrue to the great number of girls who have at present no means of continuing their education. It is sadly true that when our girls leave school, they are either without sufficient duties to consider seriously, or are tied to a calling which absorbs so much energy, that they are incapable of studying alone. In the former case, they tend to become frivolous, gossipy and ill-balanced men-



E. W. Poynter, photo.

The Pcmahaka River, Otago, below the Waipake Junction.