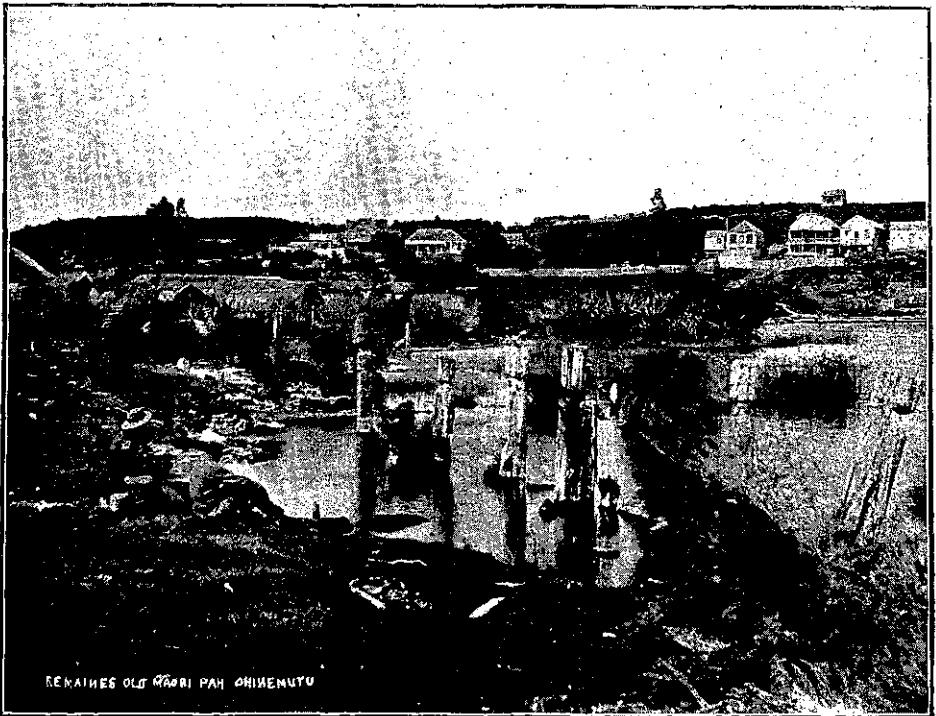


sent from a brother of the craft in the Old Country, into which a couple of bottles of port-wine had been carefully poured at correct intervals, proved yet further the attention to detail which had been one of the principal factors of our host's success in life, and fittingly concluded a repast, which, like everything else connected with the

old gentleman, was one of the best of the sort obtainable.

As we rose from the hospitable table that evening, and sought what our host called "the shake-downs," he had insisted on us occupying, we certainly would not have owned the relationship, had we had the misfortune to have been connected with the royal family.



REMAINS OLD MAORI PAH OHINEMUTU

Fulman, photo.

Remains Old Maori Pa, Ohinemutu.