

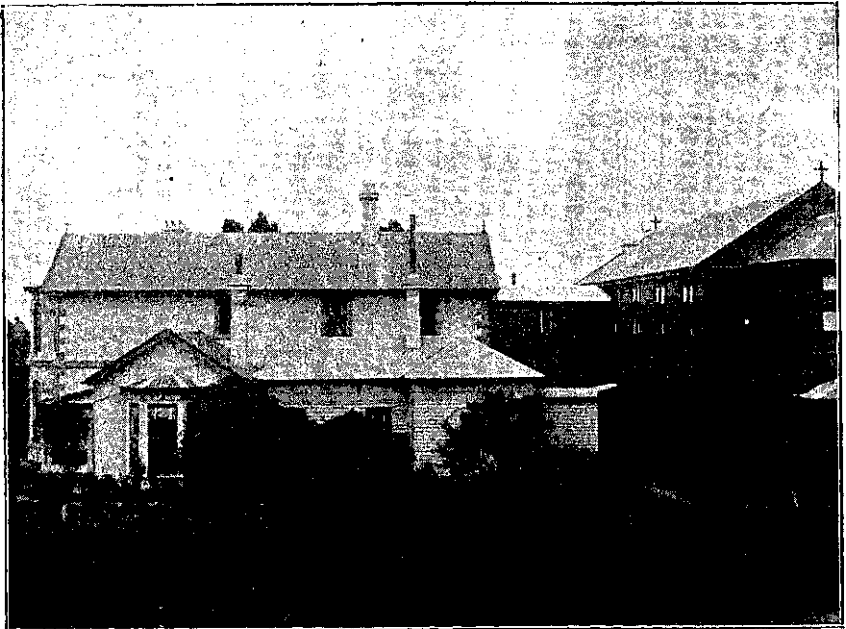
S. Hilda's Collegiate School.

By HILDA KEANE.

IT is strange to find that in most parts of New Zealand the fact of the Kilburn Sisterhoods' having an institution here is unknown. I have been asked many questions about this interesting establishment, and gladly give my impressions of the work done by these self-sacrificing women in our own colony. I have not space for a description of the origin of the sisterhood. Let it suffice that it is a community well-known to England in general, to London in particular. This community of the Church of England has done much to elevate and educate orphans and waifs. Recognizing, too, that schools where girls of a better class might receive a sound education with which the principles of religion were combined, were

practically non-existent, the sisters conceived the idea of establishing select colleges for the purpose.

In New Zealand a great field lay before them, and after much anxious thought and at the invitation of Bishop Neville, of Dunedin, two Kilburn sisters were despatched to our shores. They opened a school in Leith-street, which on account of growing numbers of pupils they had soon to leave. They then moved to Heriot Row where commanding a beautiful view of Dunedin and the harbour the S. Hilda's Collegiate School is now situated. The building is a very large one, containing cosily-furnished sitting-rooms with an abundance of comfortable easy chairs. Well-fitted class-rooms are in numbers, and a large drill-hall,



S. Hilda's College