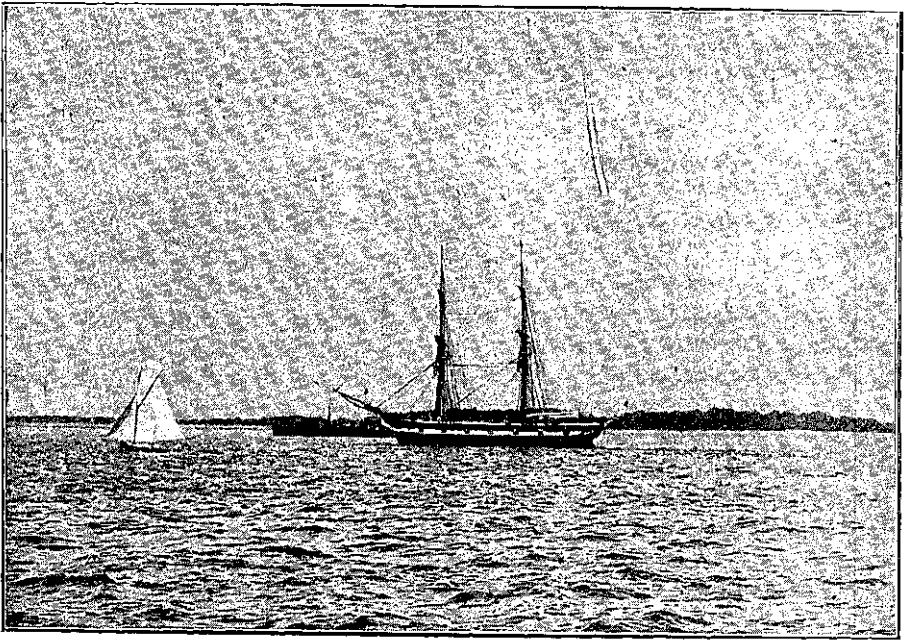


tween those sturdy, outstretched arms there was abundant loophole for seeing, and we made the most of our opportunities. I am told that in some of the ships, notably the *Majestic*, the ladies were too much in evidence, "hanging over the stern galleries like creepers over a window-box," said an officer to me. The King, observing this, signalled a rebuke which cleared the stern galleries, and let us hope taught the sex that there are occasions when their presence, however charming, is not required.

ships steamed the royal yacht, passing every ship in succession and ours three times, each event being the signal for manning the decks and playing the National Anthem. When the royal inspection was at last ended, the *Victoria* and *Albert* anchored in her allotted berth alongside the flagship. Alongside, I say, but in reality she was anchored exactly two cable lengths from the *Royal Sovereign*, a distance, roughly speaking, of a-quarter of a mile, and only through opera-glasses could one do more



H.M. Training Brig "Pilot." A type of the olden days, now used for training blue jacket boys.

We of the *Royal Sovereign* had no such opportunity accorded us; on the contrary, we were often reminded that this was in no sense a lady's day, and that we were to keep well in the background.

Heading east the *Victoria* and *Albert* advanced majestically between lines C and D, then turning she steamed between E and F, turning again she passed between D and E, and then for the last time westward between F and C.

Up and down those great lines of

than make out the outlines of the royalties on board.

With the help of a powerful telescope I got a splendid view of the King. He looked remarkably well, although much thinner. He wore the dark blue uniform of an Admiral of the Fleet, and the picturesque cocked and gold-laced hat. The broad blue sash of the garter showed up well, and gave a pretty and effective touch of colour.

The Queen was all in white, and looked pensively, sweetly beautiful as ever. She was too far off for