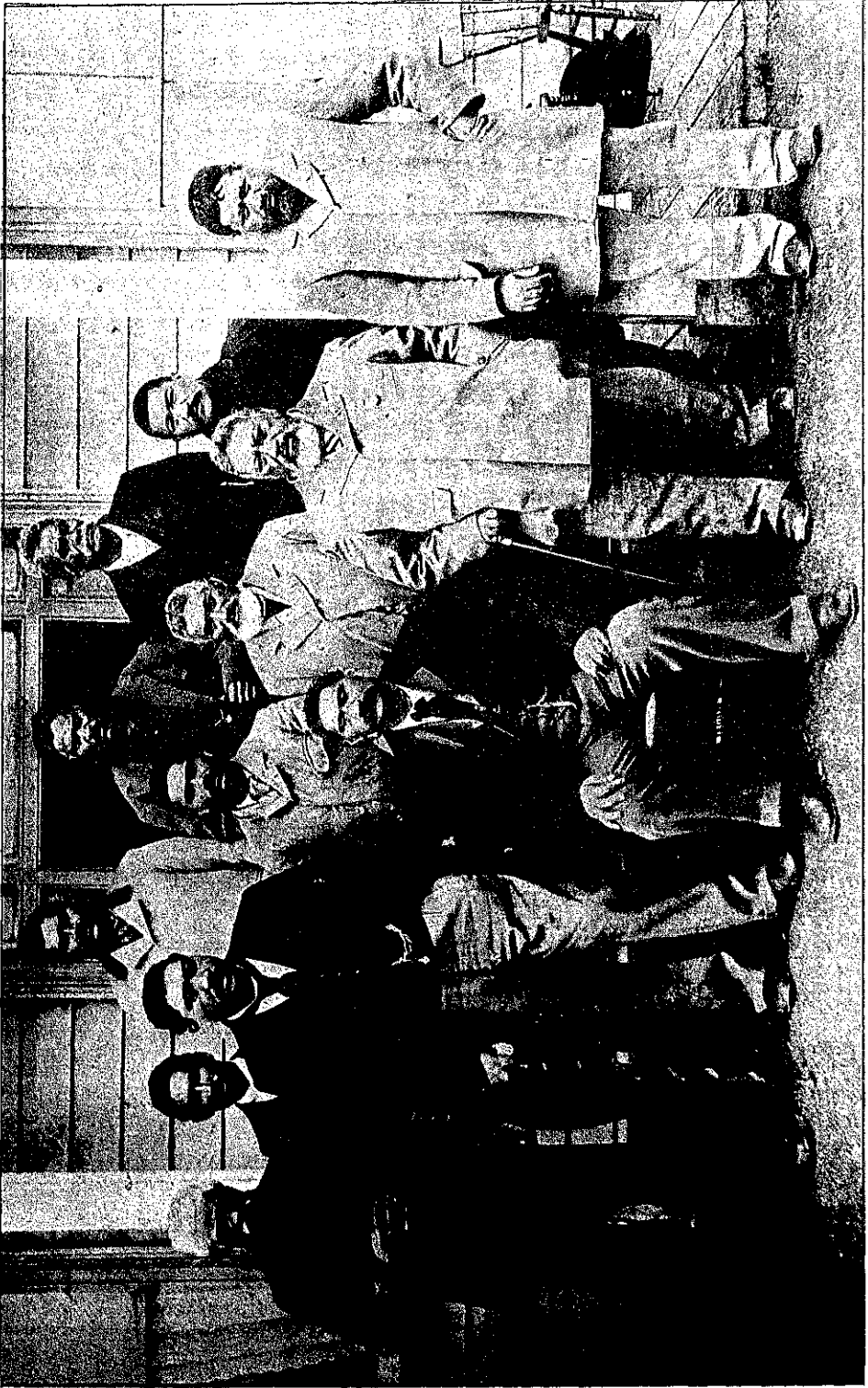


MEMBERS OF KAUHANGANDI (MAHUTA'S COUNCIL).



FRONT ROW—HAIMONA PATARA (Speaker), HENARE KAIHAU, M.H.R., MAHUTA TAWHIAO (Maori King), HAORA TERAPANUI, HOHEPA MATAITUA.

SECOND ROW—ANABU WI APO, HONGIHONGI, AHI PEPENE, HARE WAHANDI.

BACK ROW—TOHI KURI-O-WAIKATO, TE AKA TE WHARAKURA (Treasurer), TE RAWHAREKITUA TE ARU.