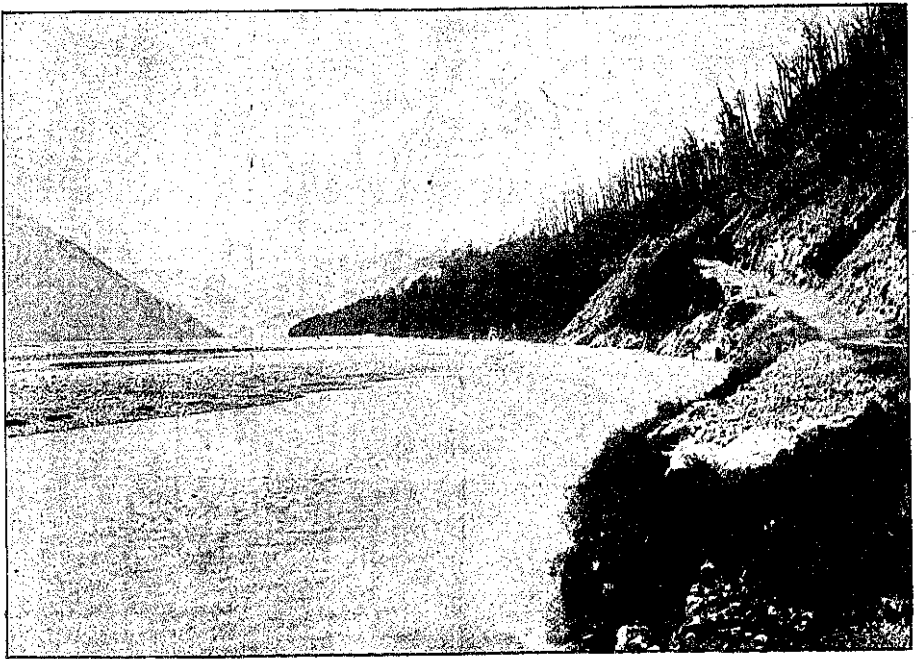


Zealand, for there are many splendid streams not yet stocked, and there are other fish that will thrive here besides trout.

The variety and beauty of New Zealand trout streams cannot be imagined except by those who have fished from one end of the country to the other. The Upper Selwyn, sparkling over rocky bars in the Malvern Hills, is distinct from the same river deep and still between weedy banks on the low plain by Lake Ellesmere. The Waimakariri, the cold, angry river as the Maoris named it ages ago, setting its green snow waters

or those splashing amidst flat rocks in the undulating limestone regions of Waikari or Mount Somers. There is a similarity and yet a difference between the Hakatere and the Rangitata, but the difference between the Rangitata and the Waitaki is subtle, and only a fisherman could observe it. The Hurunui, split into streams on the plains, or gathered in dark depths between smooth rock precipices, contrasts with the Waiau. The Tomuka on its weedy stones to the Ophi on its clean shingle, or the Orari under its crumbling banks. Then, distinct from the



*E. Wheeler & Sons, Photo.*

*Christchurch.*

THE BEALEY AND WAIMAKARIRI RIVERS IN THE SOUTHERN ALPS.

against huge cliffs amidst the mountains, is different to Rakaia, the sun-stealer, rushing in long rapids between the wonderful old glacier terraces in and below the gorge. And what a contrast to the great turbulent snow rivers are the streams that wander across the plains. The peaceful Avon winding between willow banks and rich farm lands, the Hororata gliding on from pool to pool, the Waihi running through fat pastures at Winchester, and these again differ from the deep creeks half hidden in the flax swamps,

Canterbury rivers are the rivers of Otago. The sullen Clutha, dark under frowning cliffs at Cromwell, its sister, the Shotover, running over golden beaches between mountain walls, the Molineaux, broad, bland, deceitful, gliding easily between the low flats of Stirling and Inch Clutha. Contrasts, and again contrasts, for the Pomahaka foaming over its diagonal reefs, differs from the Waiwera in its smooth, level bed, and the Waipahi with its fierce little rapids differs from the Catlins under its arch of forest trees. Then again, the