

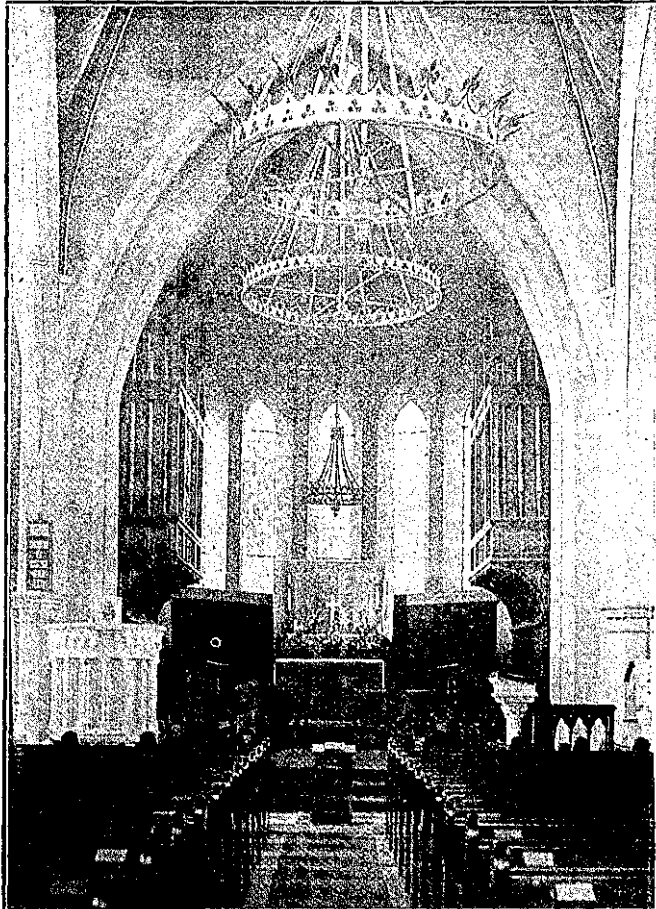
# Our New Zealand Churches.

## S. MATTHEW'S CHURCH, DUNEDIN.

**T**HE foundation stone of S. Matthew's Church, Dunedin, was laid with Masonic honours by the Bishop of Dunedin on July 11th, 1873, and the building opened on December 3rd, 1874. The total cost was £4854 4s. 3d. Messrs. Mason and Wales were the architects. The cost of the site was £800. The style of architecture is adapted Gothic, cruciform with aspidal chancel; the height and fineness of the arches at the intersection

of the transepts, etc., are very noticeable. The walls without are of dark stone with white facings; within of plaster. The main entrance is beneath a fine tower. The seats of red pine relieve the walls; the elevated roomy chancel (of which we give a photo.) with its organ on either side, gives a dignified appearance to one of the finest parish churches in New Zealand, and the largest and noblest Anglican ecclesiastical structures in the Dunedin Diocese. It is

comfortably seated for seven hundred and fifty, and has seated a thousand and upwards. The parish declined the overtures made by the Diocese for its becoming the cathedral, whereby the Diocese lost the only building worthy of being its cathedral. The organ is a three - manual one, by Bevingtons, of London. It was erected in 1880, at a total cost of £1400. To this a new trumpet stop has been added in memory of Archdeacon Fenton. In 1894 the western recess was formed into a baptistery; the south transept was made into "The Victoria Chapel," in memory of the Queen's Record Reign and was dedicated by the Vicar on June 20th, 1897. A schoolroom was built at a cost of £937 in 1885. To this a large room needs



CHANCEL OF S. MATTHEW'S CHURCH, DUNEDIN.