

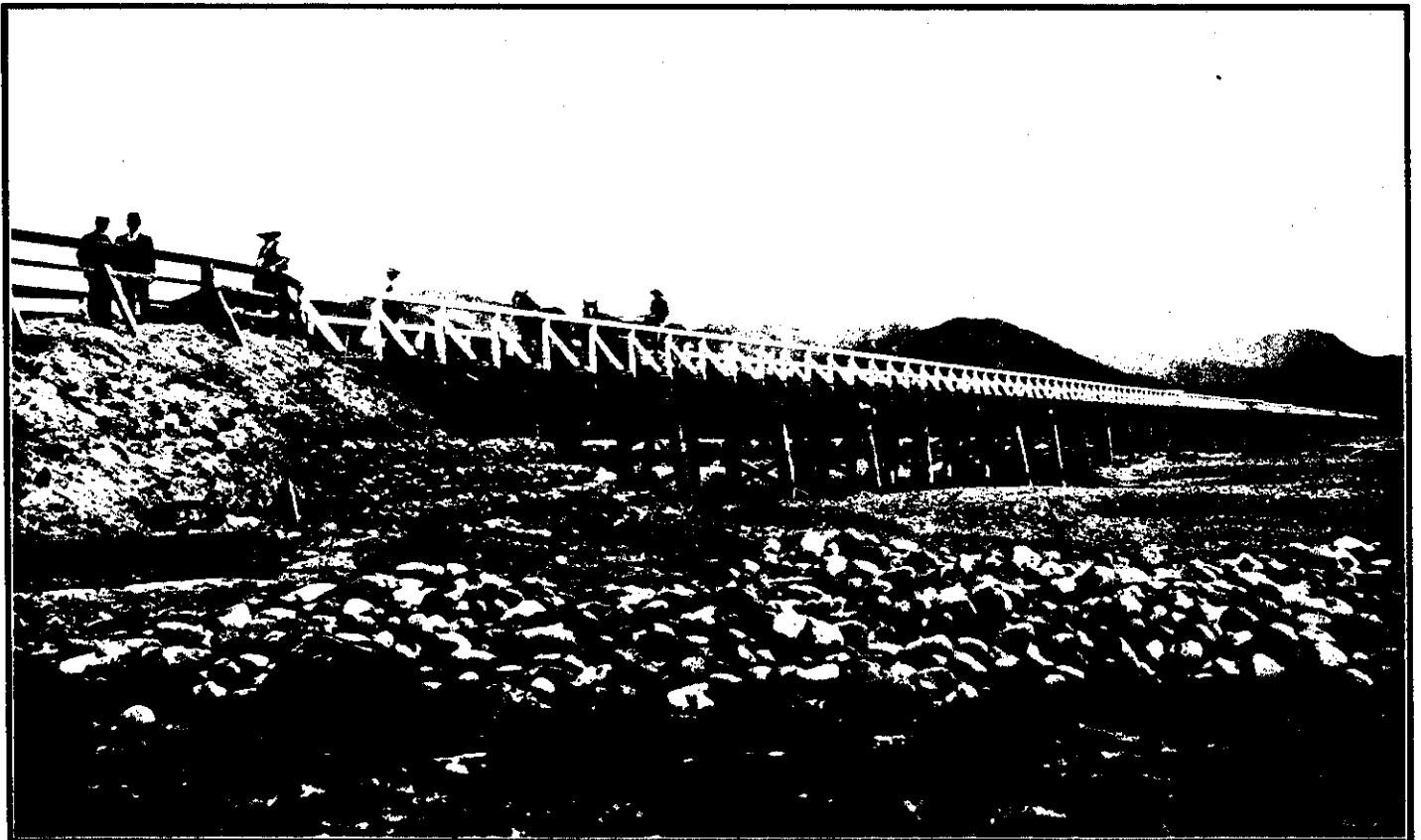


MR FRED NIBLO, WHO APPEARS IN THE TITLE ROLE OF "GET-RICH-QUICK WALLINGFORD."



MISS BEATRICE HOLLOWAY AS FANNY JASPER.

Our illustrations show portraits of two of the principals in "Get-Rich-Quick Wallingford," which is to be staged by the J. C. Williamson Comedy Company at Auckland on February 24th.



Cameron photo.

NEARLY HALF A MILE LONG—THE NEW BRIDGE OVER THE WAIRAU RIVER, AT RENWICK, MARLBOROUGH.