

THE ROTORUA HOTELS

Holiday Season, 1912-1913.

Patronised by Their Majesties



King George V. and Queen Mary

THE GOVERNORS OF AUSTRALIA AND NEW ZEALAND AND ADMIRAL SPERRY.



GRAND HOTEL, ROTORUA.

The Grand Hotel

is situated in the immediate neighbourhood of the beautifully laid out grounds of the Sanatorium, wherein are situated the celebrated "Priest," "Rachel," "Post-master," "Duchess," and other mineral baths, the curative properties of which are world-famous. Its magnificent and lofty apartments, spacious promenade, balconies, snug alcoves, and luxuriously-appointed drawing, music, conversation, reading, smoking and billiard rooms, make it equal to any of the leading European Hotels. Has perfect sanitation and lighted throughout by electricity.

Tariff: From 12/6 per Day.

Communications by Letter or Telegram
will receive prompt attention.

Situating in the centre of the Hot Lakes District
of New Zealand.

Lake House ::: Hotel :::

On the shores of the
Magnificent Lake Rotorua.



One of the most commanding
positions in the District.



From its Spacious Balconies
a Wonderful View is Obtained.



Ohinemutu, Rotorua



View Across Lake Rotorua from the Balcony of the Lake House Hotel.

Among the Great Attractions this
Popular Hotel has to offer are

8 New Hot Mineral Baths

of the latest and most up-to-date
design in

Separate
Specially Constructed
Bath Houses

situated on its own splendidly laid
out grounds, which are FREE to
the use of Visitors to this Hotel.

Tariff:
From 8/6 per Day

From the Verandah of this Hotel visitors have
constant opportunity of witnessing the

Geysers Playing

and of studying Native Life and Customs.



The Hotel possesses its own private

Hot and Cold Curative Mineral Baths

of which the most valued are the "Spout,"
"Oil," and "Carisbad" Baths.



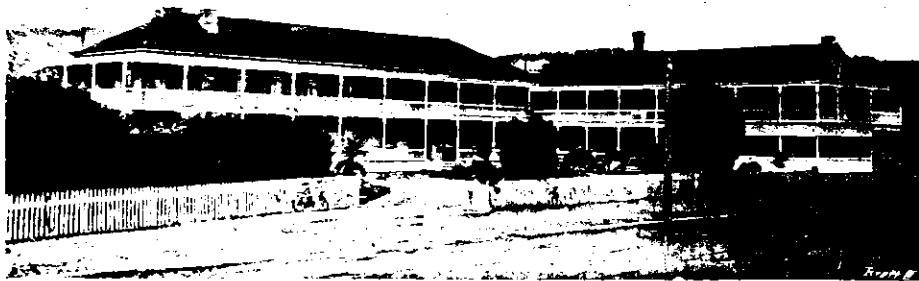
It is furnished throughout in a most luxurious
style, and is on a par with the leading Conti-
nental Spa Hotels.



Tariff: From 10/6 per Day

Geyser Hotel, Whakarewarewa, Rotorua

Situating in a Unique Position, close to the Wonderful Geysers and Maori Settlements.



GEYSER HOTEL, WHAKAREWAREWA.