

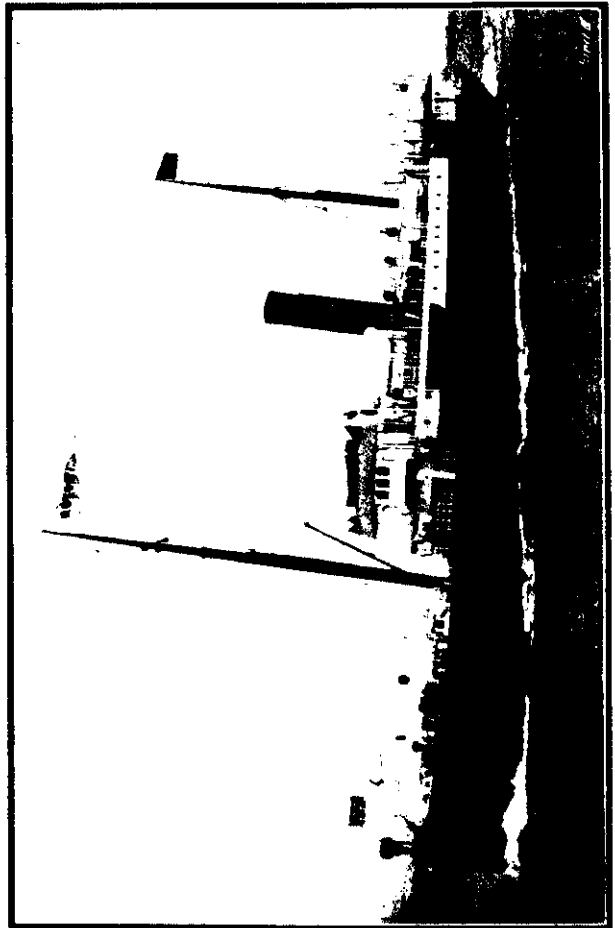


Lawrence, photo.

THE FAMOUS MUSHROOM ROCK IN WHANGARUA HARBOUR.

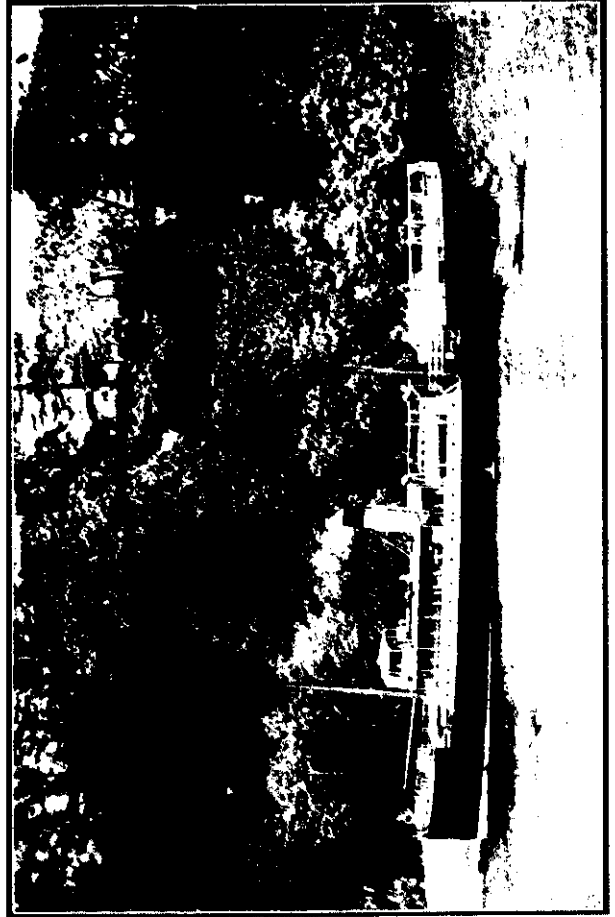


Huttliger, photo.

OUTWARD BOUND.  
The Aorangi leaving Humber Harbour, showing the wharf in the foreground and Mt. Camel in the background.

AN ADDITION TO THE NORTHERN S.S. CO'S FLEET.

The Filson Co.'s steamer, Filson, has been purchased by the Northern Co. for the Whangarei service. The vessel is to be overhauled and the interior remodelled, and will be in charge of Captain E. Stephenson.



LARGER VESSEL FOR BAY OF PLENTY SERVICE.

Increasing trade has made it necessary to put a bigger steamer on the Tauranga run, and the Northern Co. has met the position by transferring the Nautilus from the Whangarei to the Bay of Plenty service.