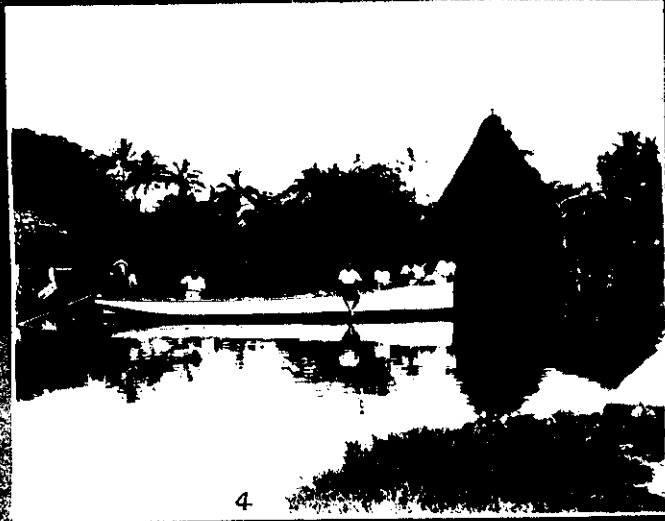


The Weekly Graphic and N.Z. Mail.



Rev. W. R. Poole, photo.

LIFE IN THE SOUTH SEA ISLANDS.—SCENES IN FIJI.

(1) The picturesque town of Somo Somo, which was the scene of shocking cannibalistic practices in the old days, and for a time missionaries were compelled to vacate the place. (2) Another view of Somo Somo. (3) Fijians playing cricket, at which game some proficiency has been attained. (4) Mission boat at Nakasaleka. (5) A native meke and presentation of food at the chief's town—quite a notable ceremony. (6) Provincial hospital at Kiova. Similar institutions have been erected by the Government in various parts for the benefit of the natives.