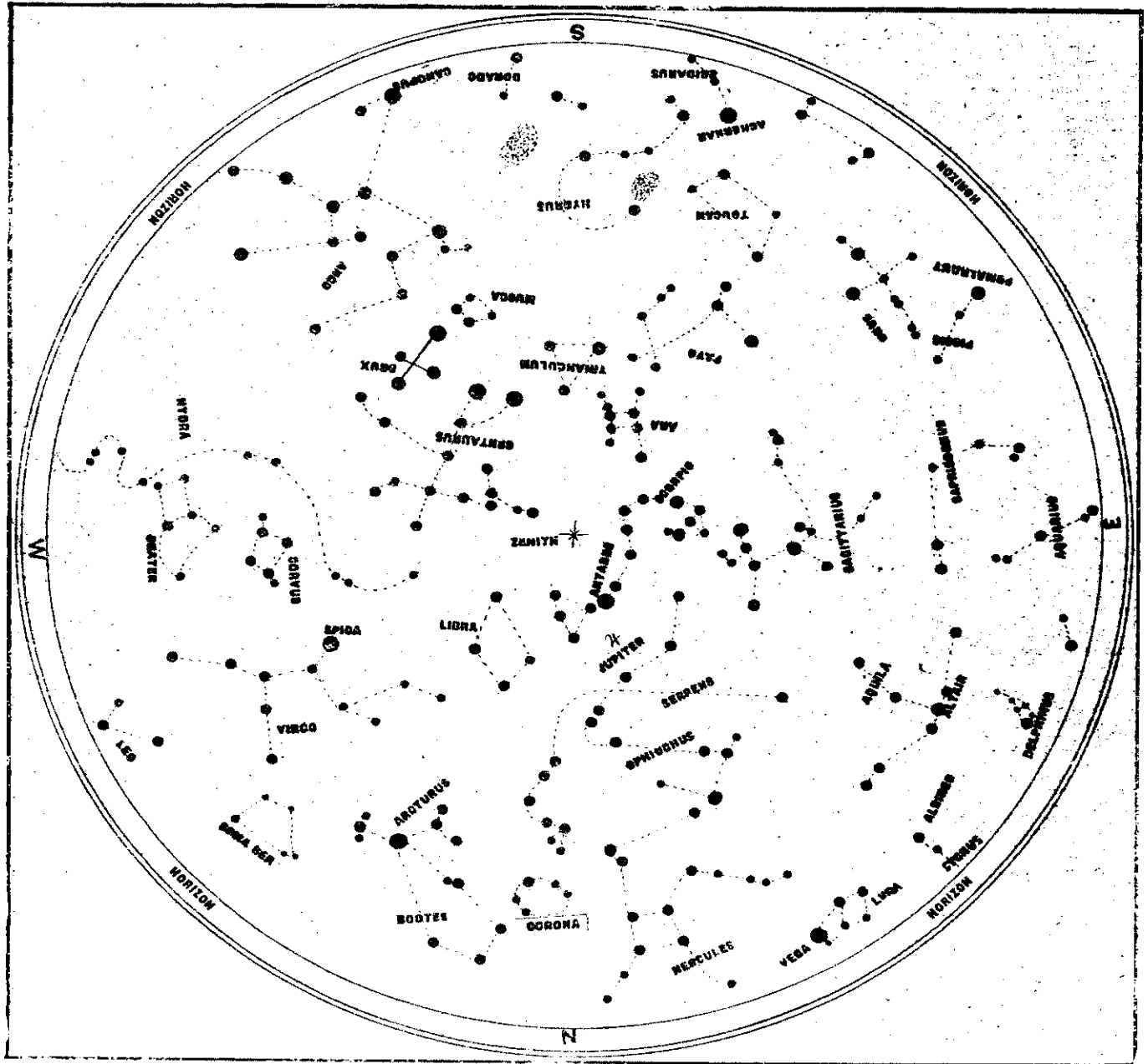


THE NIGHT SKY IN JULY.

THE STAR CHART BELOW IS SPECIALLY PREPARED FOR THE "N.Z. GRAPHIC" BY MR. J. T. WARD, DIRECTOR OF THE WANGANUI OBSERVATORY.



THE stars and other celestial bodies are shown on the above chart as they may be seen in the sky at about 8.30 p.m. of the 15th. It will, however, serve for other dates by adding four minutes per day for any date previous to the 15th, or deducting the same amount for any number of days after that date, thus the same appearance may be observed in the night sky by looking at 9.30 on the 1st, 8.30 on the 15th, and 7.30 on the 30th. The chart serves as printed for the northern view, but should be held upside

down for the south, and on either side for east and west—the horizon being on the outer edge, and the point overhead at the centre of the circle. In comparing this chart with that drawn for June, it will be seen that several constellations then visible in the west have now disappeared below the horizon, while others not then to be seen have now made their appearance in the eastern sky. Turning to the north, we see Hercules to the right, and Bootes to the left of the meridian, nearest the horizon, with Corona Borealis just past that position. Serpens and Ophiuchus are higher, and over these are Libra and

Scorpio, nearer the zenith. Aquila and Delphinus are in the north-east, Aquarius is just rising in the east, with Capricornus and Sagittarius over that constellation. Pisces and Crux are south-east, with Toucan and Pavo above, and Ara and Triangulum still higher. Hydra is on the southern meridian, and the two Magellanic clouds, low down. Canopus and Argo are moving down to their lower passage under the Southern Pole. The Southern Cross and the two bright "pointers," Alpha and Beta Centauri, are over the south-west. Hydra and Crater and Corvus are getting down towards the west, while Leo is represented

by the tuft of his tail still remaining above the north-western horizon. Virgo and the brilliant Spica are moving well over to the west, followed by Libra. The moon is not visible at the time for which this chart is drawn, but she may be seen in Virgo on the 18th to the 21st; Libra, 22nd and 23rd; Scorpio, 24th and 25th; and nearest the bright red star, Antares, on the former date; Sagittarius on the 26th, 27th, and 28th, and Capricornus, 27th and to the 30th. Jupiter is the only one of the bright planets now visible; he may be seen in Scorpio, and to the left of the fine red star, Antares, in that constellation.