



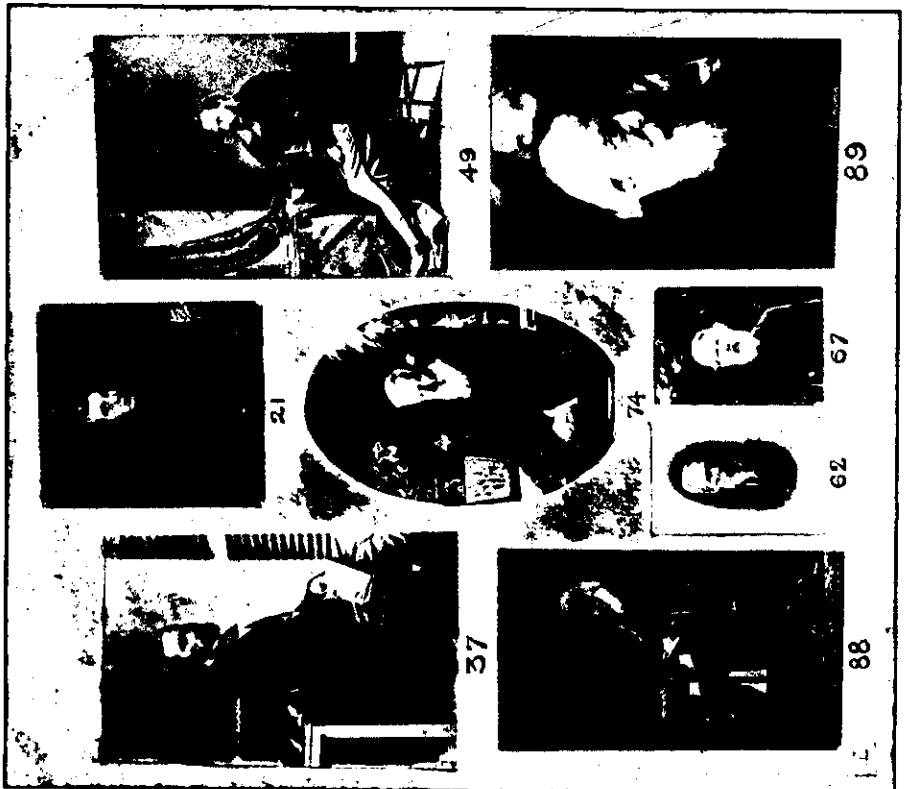
Landon Studio, photo.  
 THE EXECUTIVE COMMITTEE OF THE LEVIN MUSICAL AND EDUCATIONAL COMPETITIONS' SOCIETY.  
 The competitors at Levin are to take place on July 2, 3, and 4. The personnel of the group is as follows:—Rowing from the left, back row: Messrs. D. W. Matheson, C. F. Rockol, K. Attkin. Front row: Messrs. D. E. Partsons (secretary), Rev. A. C. Handerson (chairman), and W. Hughes.



Illlary, photo.  
 A THIN LOAD OF RIMU LOGS FROM THE SELWYN COMPANY'S BUSH NEAR PUTARURU.



SIR JOHN LOGAN CAMPBELL'S FIRST HOME IN AUCKLAND.  
 The illustration shows Commercial Bay, Auckland, or what is now lower Shoreland Street, in 1840. (1) Government Store. (2) Brown and Company. This was the veteran pioneer's first home in New Zealand. (3) Mr and Mrs Nicol. (4) Mr G. Graham of the Engineers. (5) Track over to Ohiaua Bay. (6) Ferry. (7, 8) By Early settlers, whose names have passed away.



THE LATE SIR JOHN LOGAN CAMPBELL—SIXTY-EIGHT YEARS IN PORTRAITS.

At the age of 21 Sir John was living in Edinburgh; at 37 in Auckland; at 49 in British town; at 62 in Florence; and when the re-mating four photos were taken he was in Auckland.