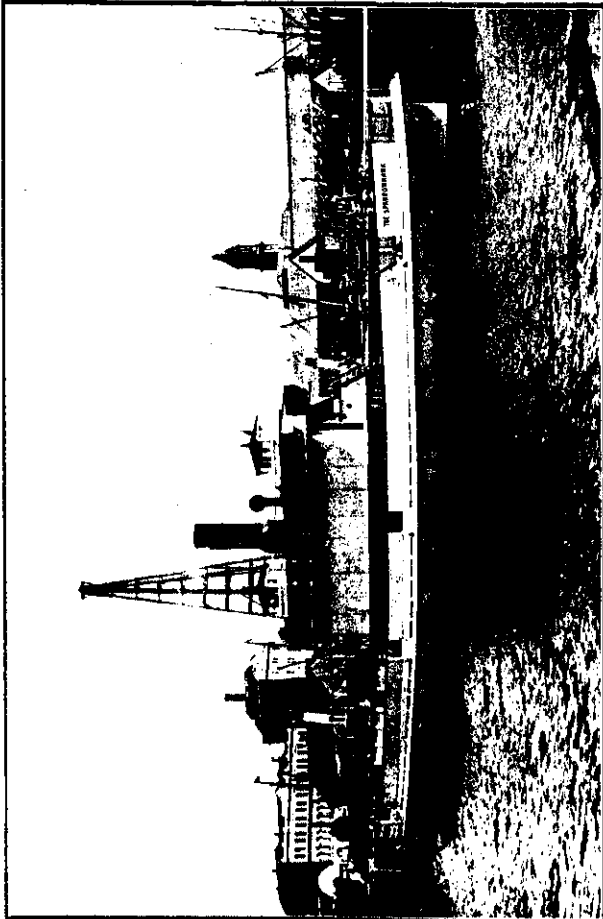


AN INTERESTING RACE, WITH A CLOSE FINISH, AT RUSSELL. Out from the pier can be seen the two contesting boats, Phyllis and Derek, the former winning by a length. Phyllis is a cabin boat, 12 h.p., Sterling, built by Bailey and Lowe, and Derek is an open boat 12 h.p., Scripps, built by Lane and Son.

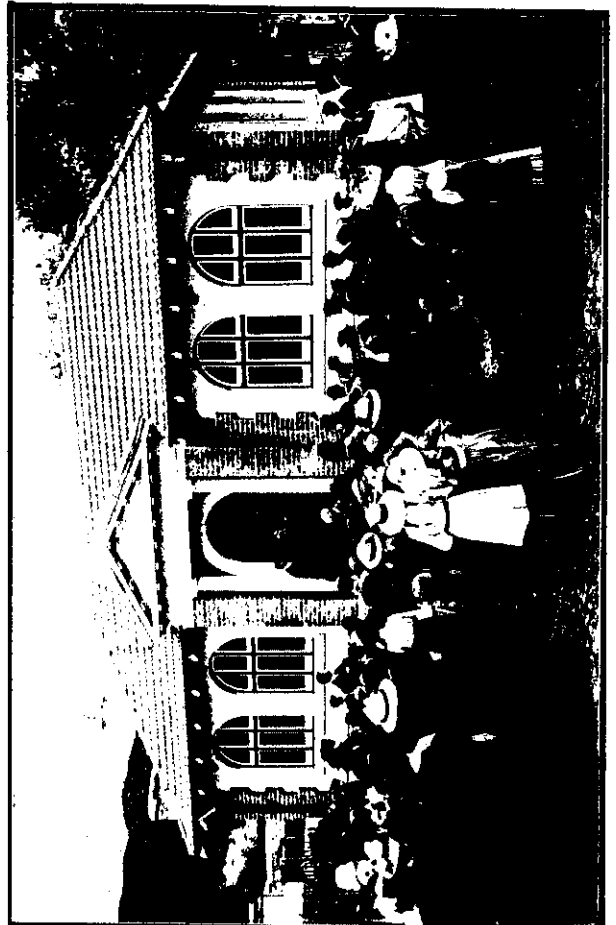


STORM CLOUDS GATHERING OVER LAKE WAIKAREMOANA.

A. W. H., photo.



A NEW HARBOUR CARGO STEAMER FOR AUCKLAND. The photo, shows the Devonport Ferry Company's new cargo steamer "Sparrowhawk," just ready for commission.



NEW OFFICES ERECTED FOR THE UPPER HUTT TOWN BOARD.

This self-acting building of brick and concrete, recently opened lately, takes the place of a 140, x 90, ft. wooden shed, which did not meet the requirements of the town board. The building was erected by workers' contracts, and by day labour, and cost, with-
out any Government aid, £2,000. The building was erected by workers' contracts, and by day labour, and cost, with-
out any Government aid, £2,000.