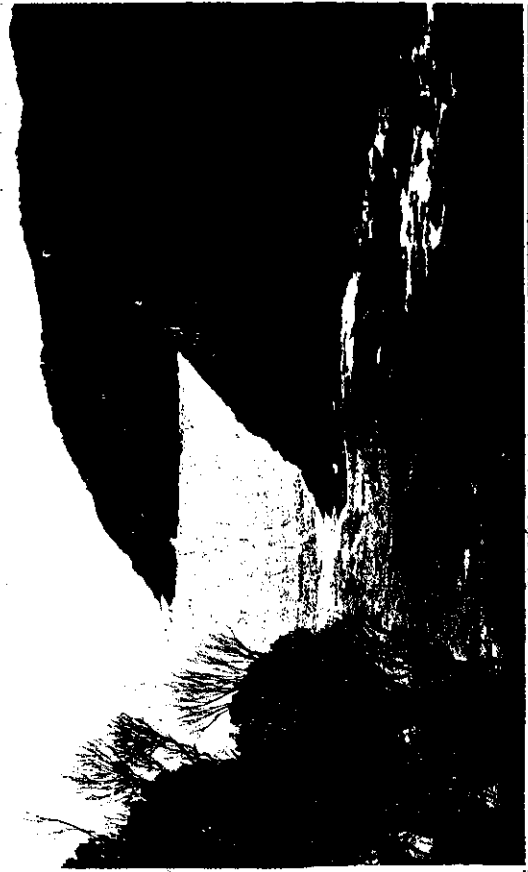
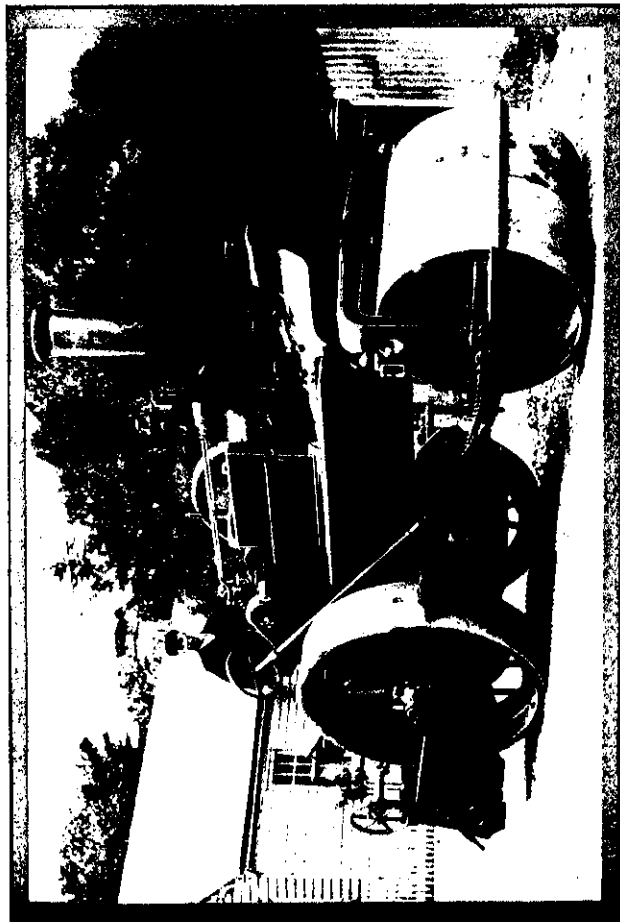


ON THE COAST OF OTAGO.



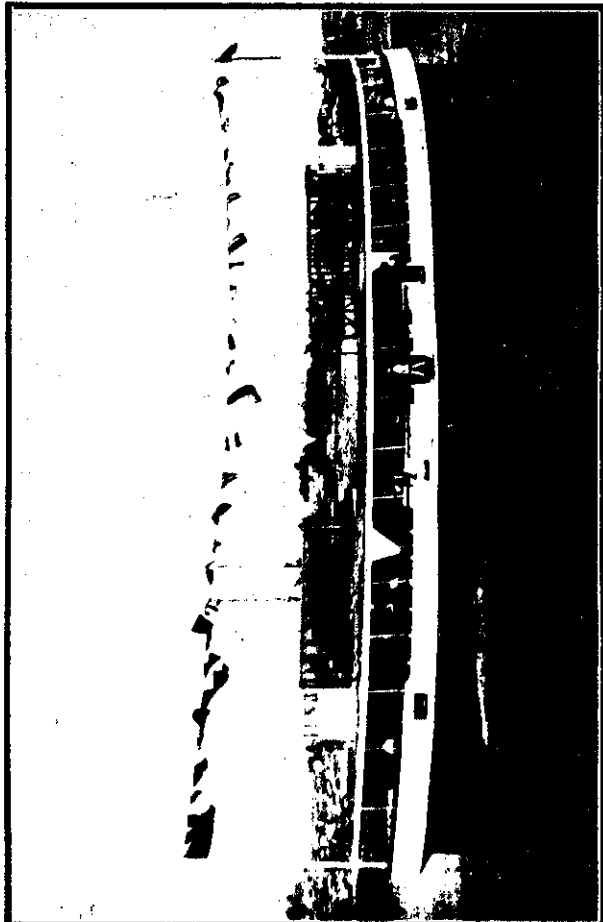
THE RUGGED WAVE-SWEPT SHORE.

Like the home of her early settlers the coast of the southern province is "stem and wild," with a picturesque that reminds one very much of the rugged North Auckland coast. The top picture is of the Nuggetts Lighthouse, and in the lower one is seen Roaring Bay, Port Molyneux.



NEWMARKET TO STRAIGHTEN ITS WAYS.

Effective steam roller purchased by the Newmarket Council in connection with its progressive scheme for the improvement of its thoroughfares.



GROWTH OF AUCKLAND'S HARBOUR TRAFFIC.

The ferry steamer Peregrine, just launched by Mr Chas. Bailey, Junr., for the Devonport Ferry Company. She will carry 1400 passengers.