

The World of Fashion.

By MARGUERITE.

Feather Boas.

ONE of the expensive luxuries of modern dress is a feather boa made of Lancer ostrich feathers that have been dyed in a variety of shaded effects. These boas measure over a yard in length, and often cost a sum that would procure a smart costume. One very beautiful boa is of shades of peacock blue and green, very suitable for wear with one of the new dark blue satin coats and skirts which are the favourites of the present hour, while another is in shades of purple. A very lovely one for evening wear is of white Lancer plumes which shade to pale salmon pink at the extreme tips. Less expensive is a stole of flat ostrich mounted on black chiffon and trimmed with a flat velvet border. This same stole can be had in shades of grey with a grey velvet border, which is very young looking, as is also one made of fast-coloured feathers mounted on a dark chestnut brown chiffon outlined with a shaded brown velvet edge.

New Tunics.

Many of the chiffon tunics are made with slightly full skirts edged with a narrow satin hem, and having the ubiquitous kimono sleeve effect. A tunic made of black or coloured cashmere is lavishly embroidered in silk and beads, and makes a very serviceable dinner or theatre frock.

New Hose.

Coloured hosiery seems to be giving way to the new black open-work silk hose which is trimmed with white and black lace insertion up the front of the

foot and leg. Not only are these particular stockings being worn for evening, but for day wear as well; and fancy striped silk stockings are also being shown at many of the best shops in London.

Persian Ribbon.

A secret recently imparted to me relates of the services of Persian ribbon employed in connection with blouses and dresses. It is a quite remarkable achievement of loom work, and promises to prove a serious rival to hand embroidery. There is a metal thread interwoven that adds immeasurably to the illusion, which is enhanced to complete realisation beneath a veiling of chiffon.

There is, too, a new and particularly rich shot ribbon and also a bird's plumage quality, beautiful alike in colour and texture, and actually endowed with the bloom always connected with fowl's plumage. With such weapons wherewith to attack the realms of dress, the ribbon industry should surely take on a fresh lease of life. That modistes are inclined to keep the secret of these beautiful ribbons to themselves, using them in secret, only serves to intensify their worth. One easily surmises how those of Persian colouring are frequently allowed to pose as embroidery beneath some kindly veiling; for of such are the tactics of dress.

Black Velvet Shoes Popular.

black velvet boots in smart shapes, with dull, smoked pearl buttons, have had a certain amount of popularity, but a greater vogue has been given to the shoes in this material. Made in all manner of shapes, the black velvet

shoe stands as one of the most popular at the moment for indoor wear. The velvet is perfectly moulded to the foot, and the trimming consists of brilliants, cut steel, old silver, or, in the case of the boudoir slippers, Louis' rosettes of black satin bebe ribbon are the chosen decoration for the designs in black velvet.

Black Suede and Steel Buckles.

One of the most successful shoes of the summer and autumn was the design in black suede with steel buckles running in a line down the centre of the instep. The buckles centred the series of openwork straps which were quite a fixture on the shoe. At the sides there were insets of elastic in V-shape to give the necessary width in slipping the foot into the shoe. This shoe was so popular last summer that it will probably take its place again in fashionable footwear as soon as the weather permits.

Other favourite shoes were the suede designs in colour to match the gown worn; the amethysts, the greys, and the mauves being extremely smart.

Fashions for the Evening.

STRAIGHT SKIRTS WITH EMBROIDERED HEMS.

NEW MATERIALS.

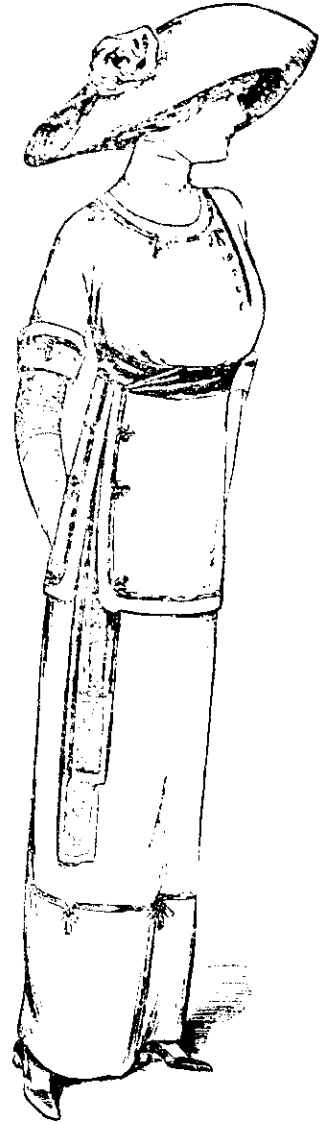
The new evening dresses have skirts made fuller and longer, some being finished with long detachable trains. Made on straight lines, the soft satin draperies fall round the feet with veilings of mousseline de soie, lightly embroidered round the hems with silk. On the corsage and sleeves there are touches of the same embroidery, and at the shortened waists there are folds of satin with jewelled buckles of long tasselled sash ends. Tunics to the extreme limit of the hem fall separately from the underdresses, and they are made in filmy materials, such as nylon, mousseline de soie, or voile.

Among the prettiest dresses for evening wear there are designs carried out in satin with deep velvet hems or narrow panels, the velvet being in the same colour as the dress. Over this falls a veiling to soften the velvet, which is sometimes embroidered all over with silk or metallic threads. Beads, too, are used in embroidering velvet, and very pretty they look.

FLORAL SILKS.

The new materials for evening dresses include silks in a variety of different textures, weaves, and decorations. Notable in the collection is a fine silk with shiny surface, over which runs a raised corded weave, and dotted at intervals all over the surface are tiny sprays of flowers. The little blossoms are raised, and being in a lighter tone than the foundation of the silk, they seem to stand out more boldly.

Black taffetas is being used over dresses of some light colour with novel effect.



SERGE DRESS.

Showing new short tunic, with upper end of sash forming a pocket.

The overdress of black is so made that it covers the underpart, only revealing it here and there by means of openings on the skirt or sleeves. All shades of green, blue, brown, and even lighter colours, such as white, cream, soft blues, and pinks, are used in this way for the underdress, while the upper part of taffetas is chiefly adorned with embroidered or crocheted buttons and touches of lace.



A SEMI-EVENING FROCK.



Habitmaker and Ride-astride Costumes
Plain and Fancy Tailor Suits, Coats,
etc.
Unexcelled Fit. Perfect Workmanship

W. A. BUNKER

GENUINE
LADIES' TAILOR

THIRD FLOOR,
PREMIER BUILDINGS,
QUEEN AND DURHAM STREETS
PHASE TAKE FIFT