



Barton, photo.

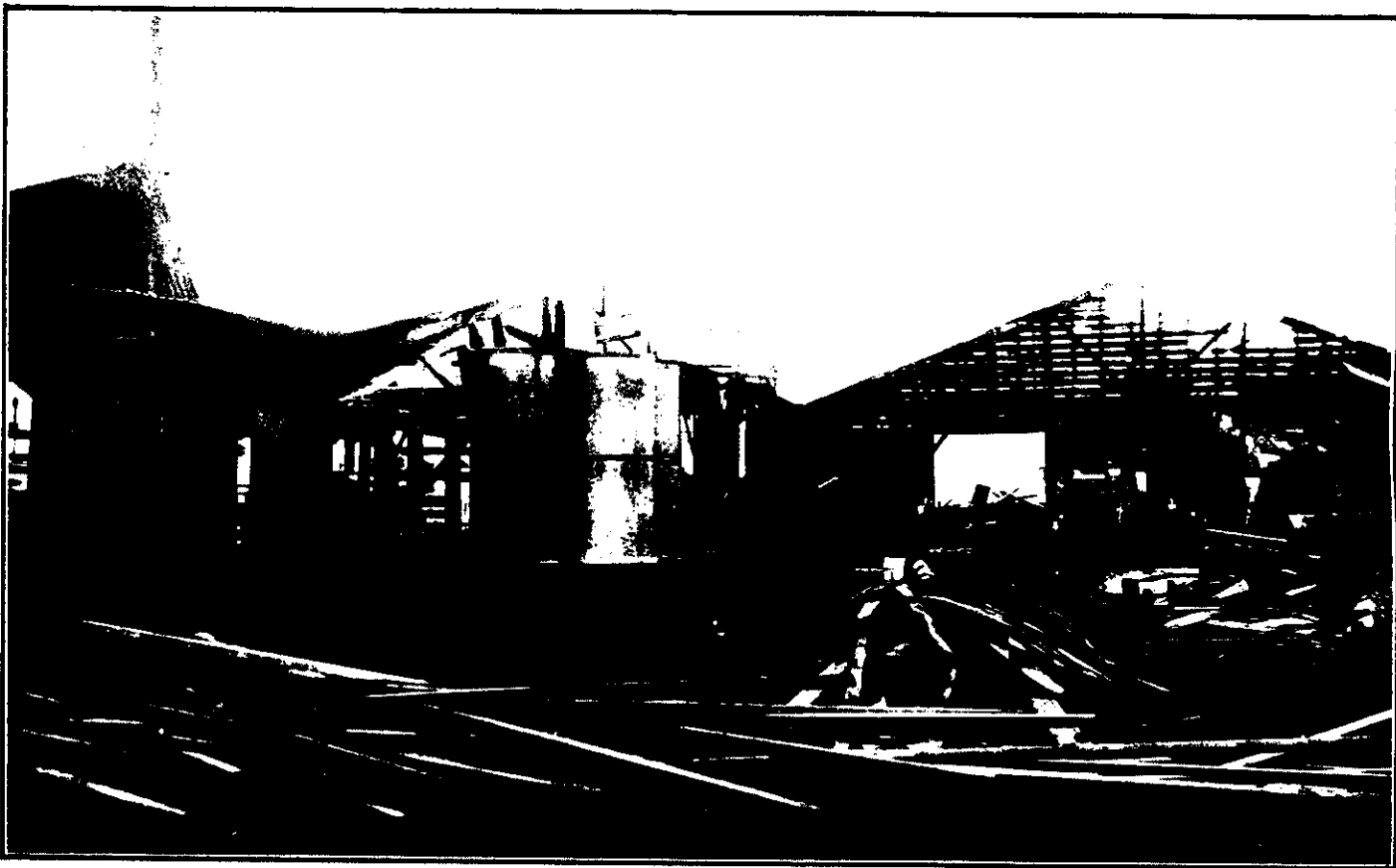
A NEW POST OFFICE AT KILBIRNIE.

The photo shows the new post office at Kilbirnie, Wellington, opened last week by the Acting Postmaster General, Hon. T. Mackenzie. It is a two-story brick building, situated on the corner of the Seaton and Lyall Bay roads. The contract price was £1407.



A BRILLIANT ENGLISH ACTRESS IN AUSTRALIA.

Miss Ethel Irving, who has just concluded a highly successful season in Melbourne, and opened at the Criterion Theatre in Sydney on Saturday last in Mr. A. E. W. Mason's play "The Witness for the Defence." At the time of the production in London some months ago, Miss Irving secured a great triumph, the eulogies appearing in the London papers being quite exceptional. There does not seem any possibility of the actress coming on to New Zealand at present.



H. De Grey, photo.

A DESTRUCTIVE BLAZE IN PALMERSTON NORTH.

The 10,000 sq. ft. Campbell's planing mill at Palmerston North was totally destroyed by fire early on the morning of August 19. The building was ablaze from 10.15 and was in flames in 20 mins. The blaze was successful in saving the new suction gas plant installed the previous day at a cost of £1100. The manager and staff were in a panic at 11 o'clock at night, watching a total ruin of the new plant, and when they left everything was apparently safe. The origin of the fire is a mystery.