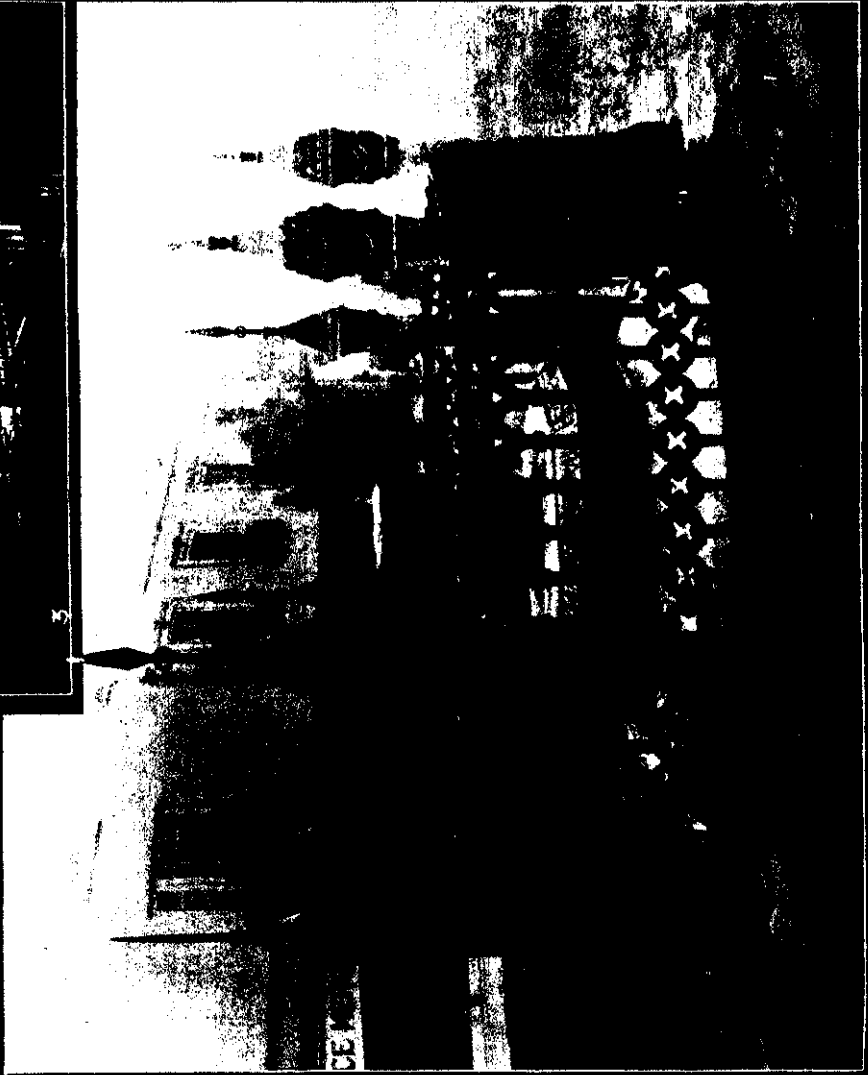
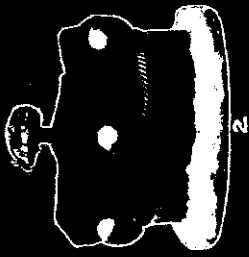
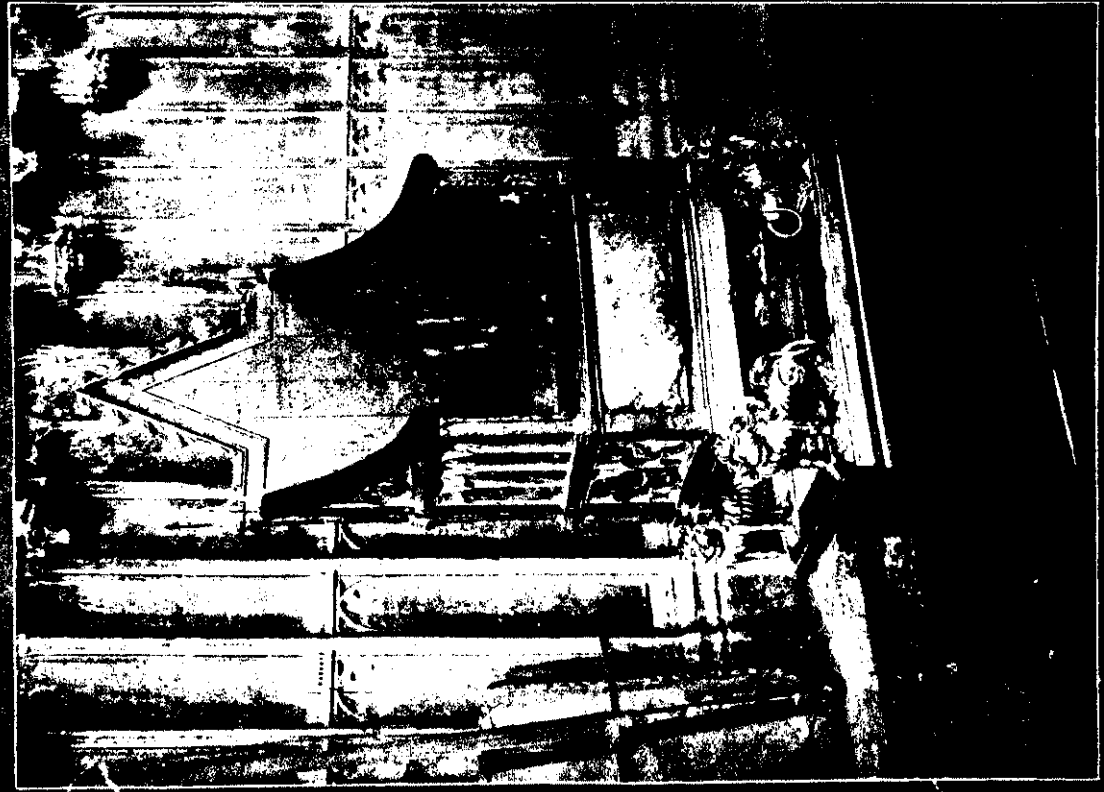


THE WONDERFUL CAVAIR



WHERE TWENTY-EIGHT BRITISH SOVEREIGNS HAVE BEEN CROWNED.

Topical, photo.

(1) St. Edward's chair. This famous chair was made by order of King Edward I. in 1266, from oak specially cut in Windsor forest, for this purpose, and the primary object was to contain the Scottish "Stone of Destiny," which that warrior King had brought back with him from Stone. The first English sovereign to be crowned in it was the ill-fated Edward II., and since that time, with but one exception, every British monarch has been crowned in it at the Coronation. The softest exception is that of Mary, Queen of Scots, who was crowned in the smaller chair of St. Edward's confessor, the Chapel of St. Edward the Confessor. The smaller chair on the right, having been built for the coronation of Queen Mary II. (2) The King's stone at Kingston, from which the town derives its name. This stone is the one on which all the early Saxon Kings were crowned.

(3) The Coronation chair in their usual resting place, the Chapel of St. Edward the Confessor. The smaller chair on the right, having been built for the coronation of Queen Mary II. (4) The King's stone at Kingston, from which the town derives its name. This stone is the one on which all the early Saxon Kings were crowned.