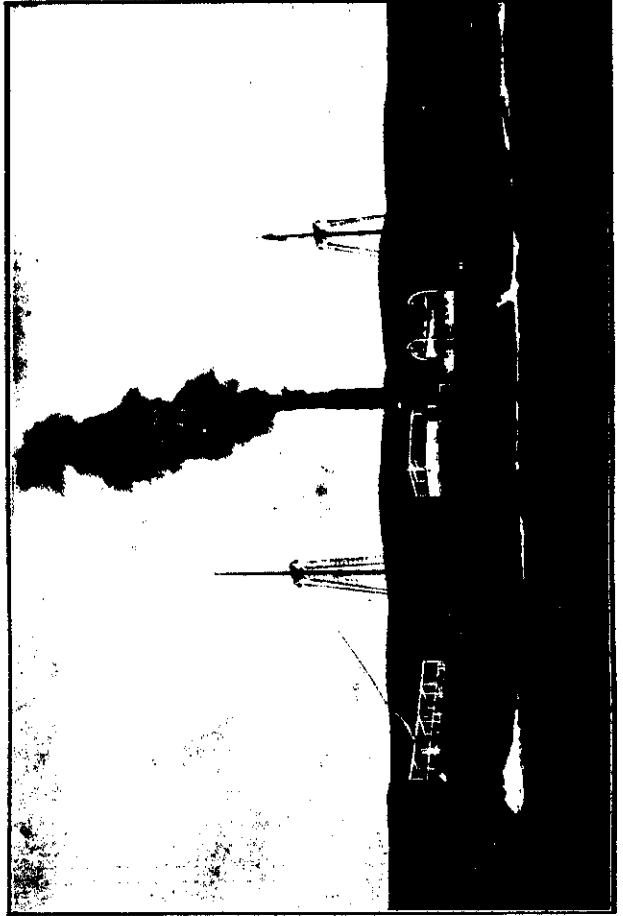




Top left, photo.

The photo shows the members of the famous Sheffield Choir singing "April, June, King" on their departure from Liverpool to America. The choir consisted of 200 members, and it was the first time that the members of the choir were seen on route to New Zealand. A number of the choir members were successful in their search for employment in New Zealand. The choir comprises 200 singers, most of them members of Dr. Coward's Sheffield choir, and the rest coming from his choirs at Glasgow, Edinburgh, Newcastle, Northport, and Leeds.

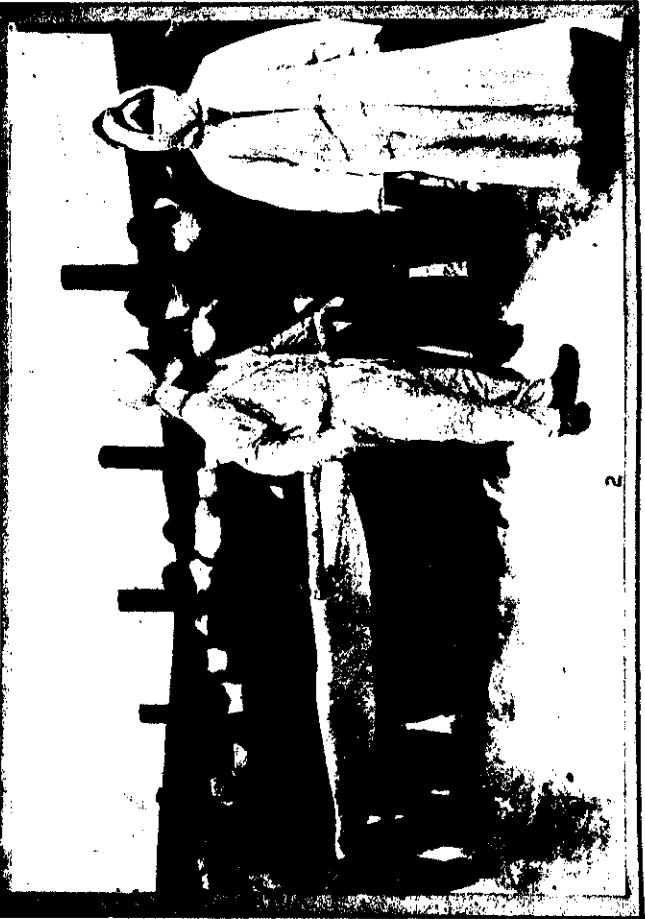


A NEW VESSEL FOR NEW ZEALAND.

This photo shows the new steamer Lamerdale, built by the Campbelltown Shipbuilding Company, doing her trial on the Clyde. The new ship is 2240 tons deadweight, and allowed a speed of over 14 knots. She was built to the order of the Vulcan Steamship Co. for the Manildra Steamship Co., Wellington.



WHERE THE PLAGUE RAGED



THE TERRIBLE PRICE OF BEING DIRTY.

The above pictures were taken during the time the plague raged through Manildra. Auckland recently had a sharp warning of the danger that await the community which does not pay sufficient attention to sanitation and cleanliness. The upper picture shows the medical officer in full protective gear, and the lower picture shows the medical officer in full protective gear. The second picture shows a sanitary brigade about to start on its day's work, gathering the victims, dead or alive, for interment, and burning infectious belongings. The doctors and their assistants breathe through hoods saturated with disinfectants.

Top right, photo.