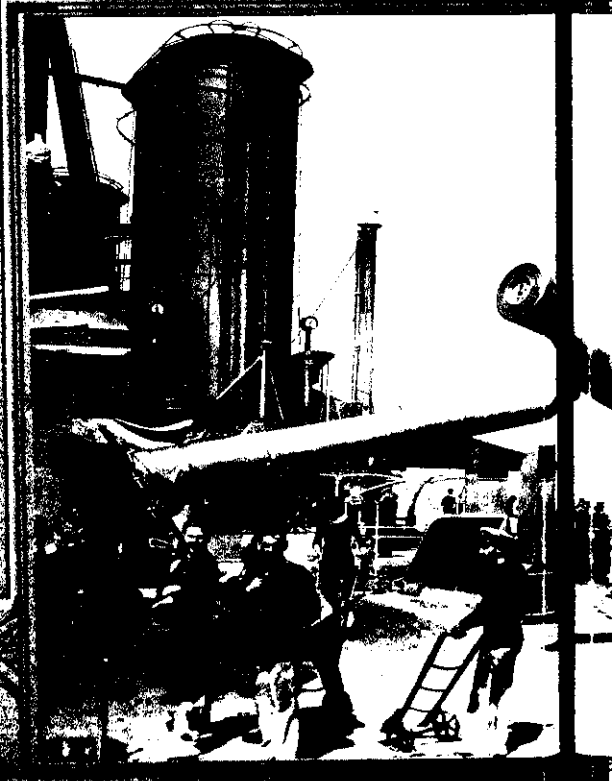
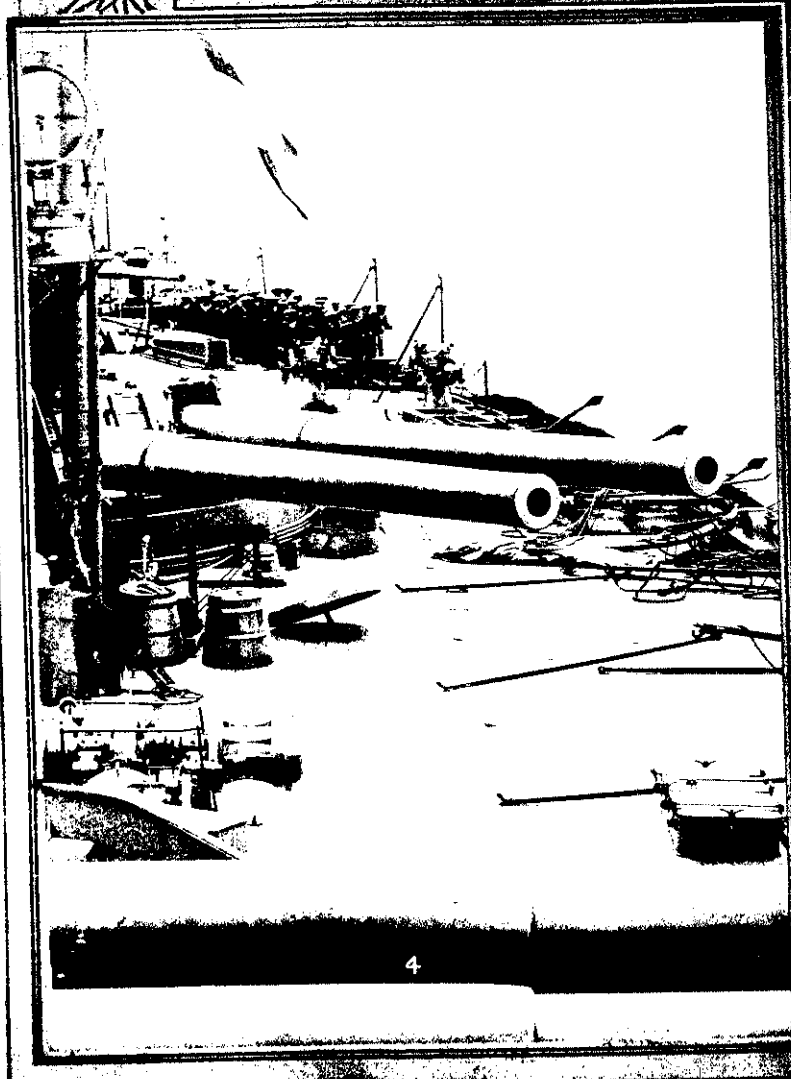
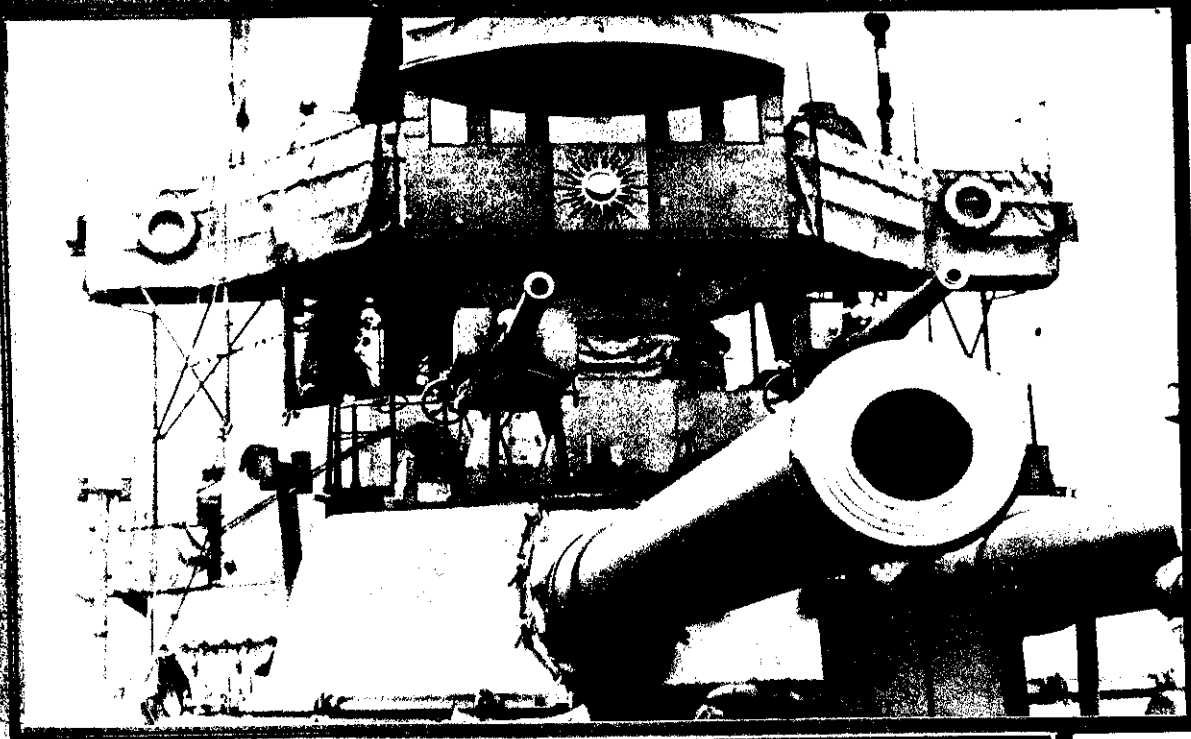


BETWEEN THE EMPER



S. Crabb photo

THE ERA OF THE ALL-BIG-GUN SHIP — WHEN
 (1) The forward barbette on H.M.S. Superb, showing the 12-in. gun. On top of the turret are two of the 4-in. guns used to repel the attacks of torpedo boats and destroyers. (2) H.M.S. Neptune is so constructed that the guns can be swung round to fire on either broadside, as well as ahead or astern. The "Neptune" can thus discharge a complete broadside of ten 12-in. guns on either side. It appears that the terrific concussion of this tremendous discharge wrecked many of the lighter fittings of the ship, and smashed much glass and crockeryware. These trilling fragments are seen on the deck. (3) The 12-in. gun of the "Neptune" is shown in its stowed position. (4) The 12-in. gun of the "Neptune" is shown in its stowed position. (5) The 4-in. guns of the "Dreadnought," showing the guns of the two after turrets trained over the quarter. The ship is cleared for action, and steaming at full speed.