

**CHESS**

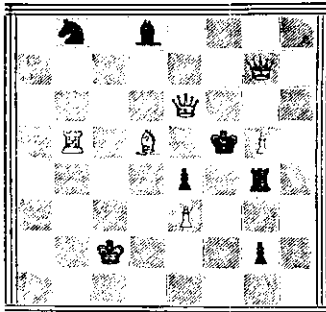
All communications to be addressed to the Chess Editor, "The Weekly Graphic and New Zealand Mail," Box 704, Auckland.

The Auckland Chess Club meets on Monday, Thursday, and Saturday evenings, at No. 24, His Majesty's Arcade, Queen-street (2nd floor).

Position No. 77.

(By H. von Gottschall.)

Black.



White.

White to play and mate in two.

Notation.—1kt1b4, GQ1, 4q3, 1R1B1kP1, 4p11, 4P3, 2K3p1, 8.

**Mason v. Davies.**

Second game of the match:—"French Defence."

White.

Black.

- |              |                  |
|--------------|------------------|
| W. E. Mason. | A. W. O. Davies. |
| 1. P-K4      | P-K3             |
| 2. P-Q4      | P-Q4             |
| 3. Kt-QH3    | PxP              |
| 4. Kt-NP     | Kt-KB3           |
| 5r. Kt-Kt3   | P-B4             |
| 6. B-K3      | Kt-B3            |
| 7. Kt-B3     | Q-Kt3            |
| 8. QR-Kt     | B-O2             |
| 9. P-B3      | B-K2             |
| 10. B-Q3     | R-Q              |
| 11. Castles  | Castles          |
| 12. Kt-K5    | Kt-Qk5           |
| 13. PxP      | PxP              |
| 14. B-QH4    | B-B3             |
| 15. P-QH3    | Qk4-Q4           |
| 16. Q-K2     | Kt-Q2            |
| 17. Kt-R5    | Kt-Kt            |
| 18. BxKt     | RxB              |
| 19. PxKt     | Q-B2             |
| 20. B-B4     | Q-Q              |
| 21. KR-Q     | PxKt3            |
| 22. B-R6     | PxKt             |
| 23. QxP      | K-R              |
| 24. BxR      | QxH              |
| 25. RxB      | BxR              |
| 26. R-QB     | B-QB3            |
| 27. R-H3     | B-K5             |
| 28. Q-K2     | Q-Q              |
| 29. P-KR4    | Q-Q4             |
| 30. R-H8 ch  | K-Kt2            |
| 31. Q-Kt4 ch | B-Kt3            |
| 32. P-R5     | Q-K5             |
| 33. R-B4     | Kt-Q8 ch         |
| 34. K-R2     | QxP ch           |
| 35. P-B4     | QxRP ch          |
| 36. QxQ      | BxQ              |
| 37. R-B7     | B-Q3             |
| 38. RxB1P    | BxP 1            |
| 39. K-R3     | B-K0             |
| 40. P-QRt4   | R-Q8             |
| 41. P-Kt5    | B-Kt3            |
| 42. R-Q7     | B-R5             |
| 43. Resigns  |                  |

**Notes.**

The City of London Chess Club has accepted the challenge of the Brooklyn Chess Club for the annual Anglo-American cable match, and have arranged to hold it at the Hotel Cecil on March 11 and 12 next.

The five games entered for the brilliancy prize at the recent Timaru Congress are being examined by Messrs. Mackay and Still, who will shortly announce their decision.

Herr Durax, the brilliant Bohemian master, is at present visiting England, where he purposes making a prolonged stay, being desirous of acquainting himself with the English language, and by the way, he is ready to accept invitations for simultaneous, consultation, or match play.

The games played at the Timaru tournament will shortly appear in book form, and the N.Z. Chess Association has entrusted Mr. H. L. James with the revision of the work.

Solution to Position No. 76.

1. P-B4

**LAWN TENNIS.**

(By ROMULUS.)

**OPEN CHAMPIONSHIP AT DANNEVIRKE.**

**Parker and Miss Nunneley Again.**

(Written specially for the "Weekly Graphic.")

The Dannevirke Club's annual tournament was held on 17th, 18th, and 19th January, a few days earlier than usual, in view of the Wellington provincial championships at Masterton on the dates originally selected by the Dannevirke people. This was a good move, as it enabled several players of repute to compete when it would otherwise not have been possible for them to do so, owing to their presence at Masterton. Chief amongst these were:—Parker, Fisher, Brown, Misses Nunneley, Travers and Wellwood.

The tournament was very ably conducted, and the 227 matches comprising eleven events were got off in the three days set down. The weather was fine throughout, though the sky was overcast occasionally, and the light at times consequently left room for improvements. The courts were in good order, and the attendance large on all three days, so these facts all combined to make the meeting an enjoyable one for players and spectators alike. The tournament was managed by Messrs. G. J. E. Bickford (President), E. A. Ransom (vice-president), W. J. Rowe (hon. secretary), and C. C. Cox (hon. treasurer), and it reflects great credit upon these gentlemen that so large a number of games were got off without a hitch of any kind or inconvenience to players.

The following table shows the winners of the championships for 1911, and those for last year, when the Hawke's Bay championships were decided at Dannevirke:

Men's Singles.—1911: H. A. Parker (New South Wales). 1910: F. M. B. Fisher (Wellington).

Ladies' Singles.—1911: Miss K. M. Nunneley (Wellington). 1910: Miss R. E. Wellwood (Hawke's Bay).

Men's Doubles.—1911: H. A. Parker (New South Wales), and H. W. Brown (Wellington). 1910: G. J. Dickie and S. Powdrell (Taranaki).

Ladies' Doubles.—1911: Misses Eva Travers (Wellington), and R. E. Wellwood (Hawke's Bay). 1910: Misses R. E. and Eileen Wellwood (Hawke's Bay). Combined Doubles.—1911: F. M. B. Fisher and Miss Eva Travers (Wellington). 1910: G. Ebbett and Miss R. E. Wellwood (Hawke's Bay).

Details of all the championship matches are given below:

**CHAMPIONSHIPS.**

**MEN'S SINGLES.**

First Round.—D. Cowan v. O. Prouse, by default.

Second Round.—J. Hartgill v. G. H. Ulrich, 6-1, 6-5; H. Symons v. T. G. Price, 6-4, 6-1; F. M. B. Fisher v. O. H. Druce, 6-4, 6-4; J. G. Swainson v. D. Cowan, 6-2, 6-1; C. C. Cox v. C. Blundell, 6-3, 6-0; J. L. Blundell v. G. L. Hartgill, 6-1, 6-5; H. W. Brown v. J. E. Marshall, 6-3, 6-0; H. A. Parker v. G. Ebbett, 6-1, 6-0.

Third Round.—F. M. B. Fisher v. J. G. Swainson, 6-5, 6-2; C. C. Cox v. J. L. Blundell, 6-1, 6-3; H. A. Parker v. H. W. Brown, 6-4, 6-2.

Semi-Finals.—F. M. B. Fisher v. J. Hartgill, 6-3, 6-5; H. A. Parker v. C. C. Cox, 6-2, 6-4.

Final.—H. A. Parker (N.S.W.) v. F. M. B. Fisher (Wellington), 6-4, 6-0.

**LADIES' SINGLES.**

First Round.—Miss Nunneley v. Miss Gray, 6-2, 6-0; Miss Wellwood v. Mrs Haggitt, 6-1, 6-1; Miss Bolton v. Miss D. Simpson, 6-4, 6-0; Miss Clark v. Miss Brewster, 6-3, 6-0, 6-4; Miss Travers v. Miss J. Hindmarsh, 6-1, 6-2; Miss I. Williams v. Miss Hartgill, 6-2, 6-1, 7-5.

Second Round.—Miss Nunneley v. Miss Braithwaite, 6-2, 6-1; Miss

Wellwood v. Miss Bolton, 6-3, 6-4; Miss Travers v. Miss Clark, 6-0, 6-2; Miss L. Williams v. Miss L. K. Hughes, 6-2, 6-2.

Semi-Finals.—Miss K. M. Nunneley v. Miss R. E. Wellwood, 6-3, 6-0; Miss Eva Travers v. Miss L. Williams, 6-4, 6-2.

Final.—Miss K. M. Nunneley (Wellington) v. Miss Eva Travers (Wellington), 6-1, 6-4.

**MEN'S DOUBLES.**

First Round.—D. Cowan and F. Tomoana v. J. L. and C. Blundell, 6-3, 6-4; H. A. Parker and H. W. Brown v. T. H. Jones and L. E. Mair, 6-1, 6-2; F. M. B. Fisher and W. J. Rowe v. J. G. Swainson and D. H. Druce, 6-5, 4-6, 8-6; J. and G. L. Hartgill v. H. Pidduck and C. Barker, 6-1, 6-3.

Second Round.—G. Maddison and H. Symons v. C. Morrin and J. E. Marshall, 5-6, 6-5, 6-2; H. A. Parker and H. W. Brown v. D. Cowan and F. Tomoana, 6-2, 6-0; F. M. B. Fisher and W. J. Rowe v. J. and J. L. Hartgill, 6-4, 6-4; C. C. Cox and G. Ebbett v. Dr. Drake and G. H. Ulrich, 6-4, 6-2.

Semi-Finals.—H. A. Parker and H. W. Brown v. G. Maddison and H. Symons, 6-1, 6-5; C. C. Cox and J. Ebbett v. F. M. B. Fisher and W. J. Rowe, 6-2, 2-6, 6-1.

Final.—H. A. Parker (N.S.W.) and H. W. Brown (Wellington) v. C. C. Cox and J. Ebbett (Hawke's Bay), 6-4, 6-2.

**LADIES' DOUBLES.**

First Round.—Misses Clark and Hindmarsh v. Misses Eva Wellwood and Irvine, 6-2, 6-2; Misses Nunneley and E. Williams v. Misses E. and D. Wellwood, 5-6, 6-2, 6-4; Misses L. Williams and Ryan v. Misses Hartgill and Braithwaite, 6-2, 6-2.

Second Round.—Misses Bolton and J. K. Hughes v. Misses D. Simpson and Brewster, 6-2, 6-2; Misses Nunneley and E. Williams v. Misses Clark and Hindmarsh, 6-3, 6-0; Misses Travers and Wellwood v. Misses L. Williams and Ryan, 5-6, 6-3, 6-6; Mrs. Cato and Miss Nevill v. Mrs. Hair and Miss Cowper, 6-3, 6-3.

Semi-Finals.—Misses Nunneley and E. Williams v. Misses Bolton and L. K. Hughes, 6-2, 6-2; Misses Travers and Wellwood v. Mrs. Cato and Miss Nevill, 6-2, 2-0 (later pair retired).

Final.—Misses E. Travers (Wellington) and R. E. Wellwood (Hawke's Bay) v. Misses K. M. Nunneley and E. Williams (Wellington), 3-6, 6-3, 6-2.

**COMBINED DOUBLES.**

First Round.—H. A. Parker and Miss L. Williams v. O. Prouse and Miss L. K. Hughes, by default.

Second Round.—J. G. Swainson and Miss Brewster v. H. Symons and Miss F. Wellwood, 6-4, 6-3; J. E. Marshall and Miss Irvine v. C. Blundell and Mrs. Cato, 6-0, 6-4; H. W. Brown and Miss Nunneley v. F. Tomoana and Miss Nevill, 6-2, 6-1; H. A. Parker and Miss L. Williams v. J. Hartgill and Miss Braithwaite, 6-2, 5-6, 8-9; J. Ebbett and Miss R. E. Wellwood v. O. H. Druce and Miss E. Williams, 6-4, 6-5; F. M. B. Fisher and Miss Travers v. W. J. Rowe and Miss Ryan, 6-1, 6-0; Dr. Drake and Miss Clark v. D. Cowan and Miss Simpson, 6-3, 6-4; C. C. Cox and Miss Hartgill v. G. H. Ulrich and Miss Bolton, 6-1, 6-2.

Third Round.—J. G. Swainson and Miss Brewster v. J. E. Marshall and Miss Irvine, 6-2, 6-4; H. W. Brown and Miss Nunneley v. H. A. Parker and Miss L. Williams, 6-1, 6-5; F. M. B. Fisher and Miss Travers v. G. Ebbett and Miss R. E. Wellwood, 6-1, 6-5; C. C. Cox and

Miss Hartgill v. Dr. Drake and Miss Clark, 6-1, 6-0.

Semi-finals.—H. W. Brown and Miss Nunneley v. J. G. Swainson and Miss Brewster, 6-3, 6-3; F. M. B. Fisher and Miss Travers v. C. C. Cox and Miss Hartgill, 6-4, 6-2.

Final.—F. M. B. Fisher and Miss E. Travers (Wellington) v. H. W. Brown and Miss K. M. Nunneley (Wellington), 6-0, 6-3.

**Comments.**

**MEN'S SINGLES.**

Parker had not the slightest difficulty in winning the championship, despite the fact that his opponents included players of the calibre of Brown, Cox, and Fisher, whom he defeated in turn, his record for the event reading 48 games to 17 without loss of a set. Brown gave him as good a game as anyone, and there were plenty of deuce games. Cox did not do quite so well as expected, especially as he had been in fine form throughout the meeting, while Fisher was outclassed purely and simply. In the final, Parker gave a splendid exhibition, his driving being deadly, and his command over the ball wonderful. He hit hard, and often, and maintained a fine length throughout. In the first set, Fisher occasionally appeared to advantage with some deadly smashing, but he afterwards got very few opportunities.

**LADIES' SINGLES.**

Since winning the New Zealand championship, Miss Travers has been twice defeated by Miss Nunneley (at time of writing the Wellington provincial championship had not been decided), and very decisively on each occasion. Miss Nunneley played with all her old dash through three trying days, and the fact that she lost only thirteen games in four matches will give some idea of the form she was in, her opponents including Misses Braithwaite, R. Wellwood, and Travers.

Miss L. Williams, the Sydney player, demonstrated that she was an able exponent of the game. She defeated that brilliant young player, Miss Hartgill after a closely-contested three-setter, in which her volleying and back-hand strokes were splendid. In the semi-final against Miss Travers, she commenced with a lead of 4-1, during which time she was constantly in at the net and scoring consistently, but later she failed to keep it up, and once Miss Travers settled down to solid pace-driving on her opponent's forehead; the latter was beaten, and she only scored two of the last thirteen games, Miss Travers winning 6-4, 6-2.

Miss Wellwood's match against Miss Nunneley was a great disappointment to her admirers, but she did not play at all badly. Her opponent was heart-breaking, and played with a consistency that made one despair of gaining a point from her.

**MEN'S DOUBLES.**

There was only one pair in this from start to finish—Parker and Brown; and it was a great pity that Cox and Fisher could not have paired. Fisher and Rowe had two very close calls before going down in the semi-final to Cox and Ebbett, from whom they took a set. Fisher made no allowance for his partner's weakness, and had Rowe been playing with a man like Cliff Dickie (who, apart from dominating the play, gives his partner a word of encouragement and advice when things are going badly) he would undoubtedly have done a great deal better. He and Fisher did exceedingly well to win a set under the circumstances, but Fisher practically took charge, and went for everything.

In the final, Cox and Ebbett did as well as anyone expected, though Ebbett's play gave one the impression he was conscious that he was out of his class. He wisely left the greater share of the work to Cox, who, however, did not show to quite the same advantage as in some of his other games.

**LADIES' DOUBLES.**

As in the Marlborough championship, Misses Travers and Wellwood (N.Z. champions) were almost defeated before reaching the final. This time Misses L. Williams and Ryan led 5-3 (and the former's service to follow) in the final set, but twice the former missed an easy shot that would have given her side the match. Both Miss Williams and Miss Ryan played very confidently, and on the showings were almost as strong a pair as any in the event, especially as Miss Williams did not get furred, but stuck to her game at the net, where she fre-