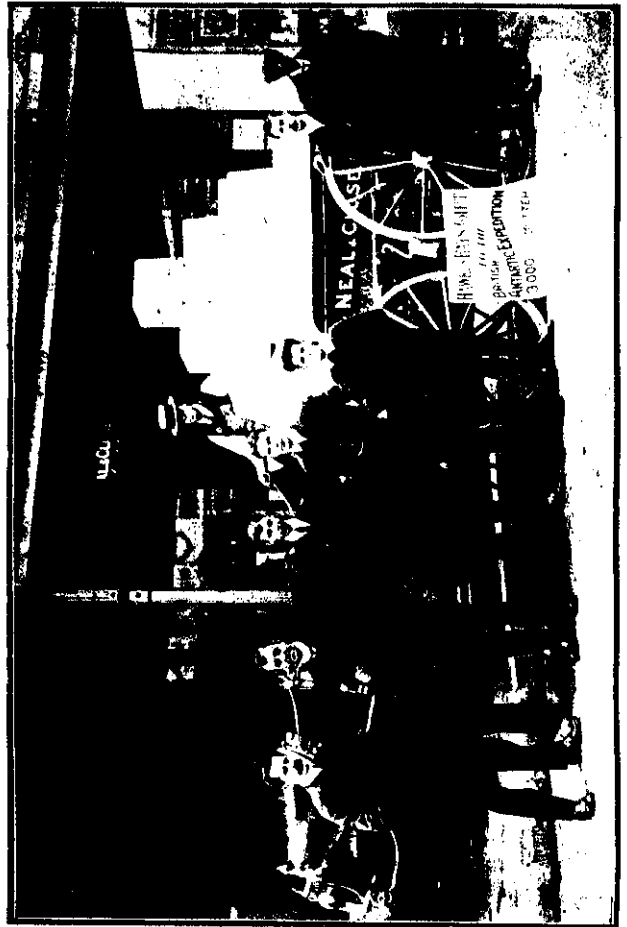
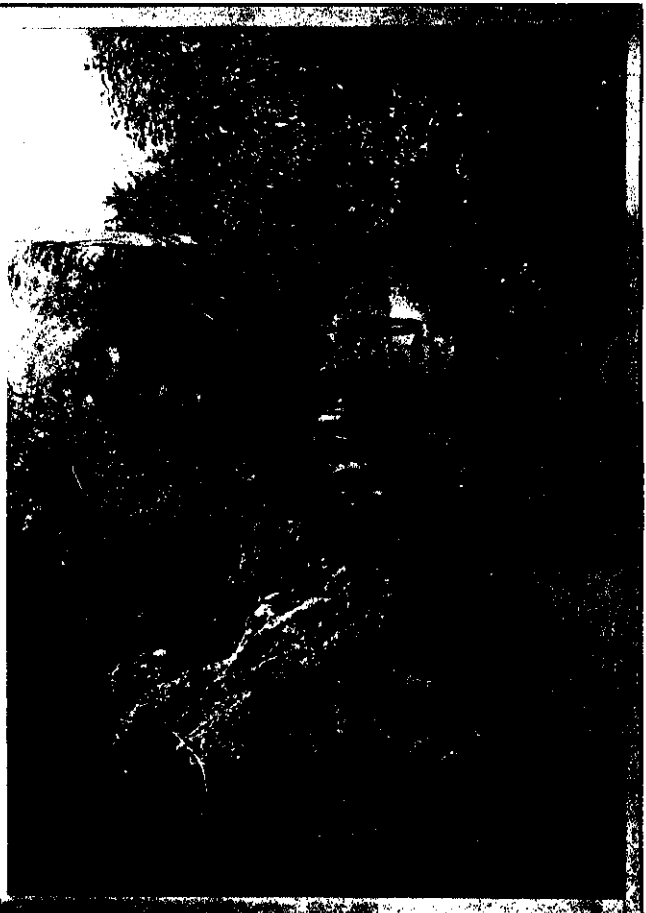


THE GREAT INDIAN MUSEUM FOR LONDON.
It is proposed to build an immense Indian museum in London on a site almost opposite the Houses of Parliament. The building, according to the design illustration above, would cost between £700,000 and £800,000. It would face south, as all Indian buildings should do, and would be a masterpiece of architecture. From the Embankment, the home of treasures from the great Indian Empire would offer a sight at once noble and hospitable.



THREE THOUSAND POUNDS OF BITTER FOR THE ANTARCTIC EXPLORERS.
Sorell, photo. Gifts of stores and provisions of various kinds for the British Antarctic Expedition have been forthcoming from the different centres of New Zealand, and our illustration shows part of the Hawke's Bay gift, 3,000 lbs. of butter.



NATURAL SPLENDOR IN MARLBOROUGH.

Marlborough is still an unspoiled province, with lush abounding amongst its big hills and valleys, although the process of development is now going on rapidly. The land is being taken up for agriculture, a picturesque township on the Pukekohe River, and the beautiful scenery of the State into the bush. (1) A pretty stretch of road through the bush.

C. Knight, photo.