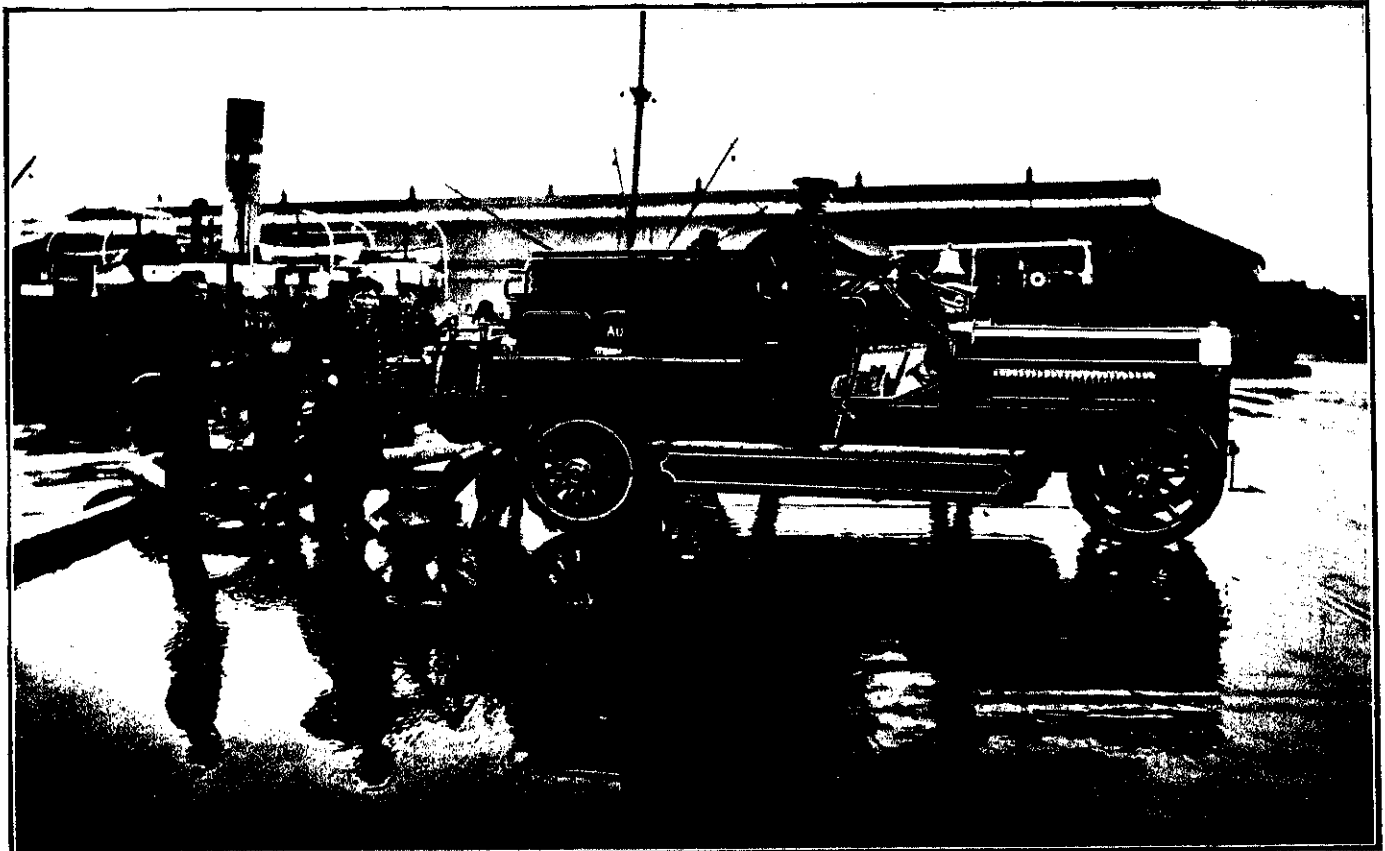


PUMPING FROM THE HARBOUR.
1 1/2-inch jets at 1300 lbs pressure.

PUMPING FROM THE CITY MAINS.
A 1 1/2-inch jet at a pressure of 1730 lbs.

PUMPING FROM THE HARBOUR.
A 2-inch jet at 1100 lbs pressure.

TESTING THE NEW ENGINE—A JET OF WATER TWO HUNDRED FEET HIGH.



Oliver and Walker, photo.

A MODERN FIRE-FIGHTER, WHICH THROWS 800 GALLONS A MINUTE TO A HEIGHT OF 200 FEET.

The Auckland Fire Board's new turbine motor fire engine was given its trials most satisfactorily last week, and is now the most valuable fire-fighting asset the city possesses. According to the results attained at the trials, it is estimated that if the three deliveryes were at work simultaneously, they would deliver every minute 800 or 900 gallons to a height of about 200 feet. Chauffeur O. B. Elliott is in charge of the motor. The trials were conducted in the presence of Supt. Woolley and Mr. D. Goldie, Chairman of the Auckland Fire Board.