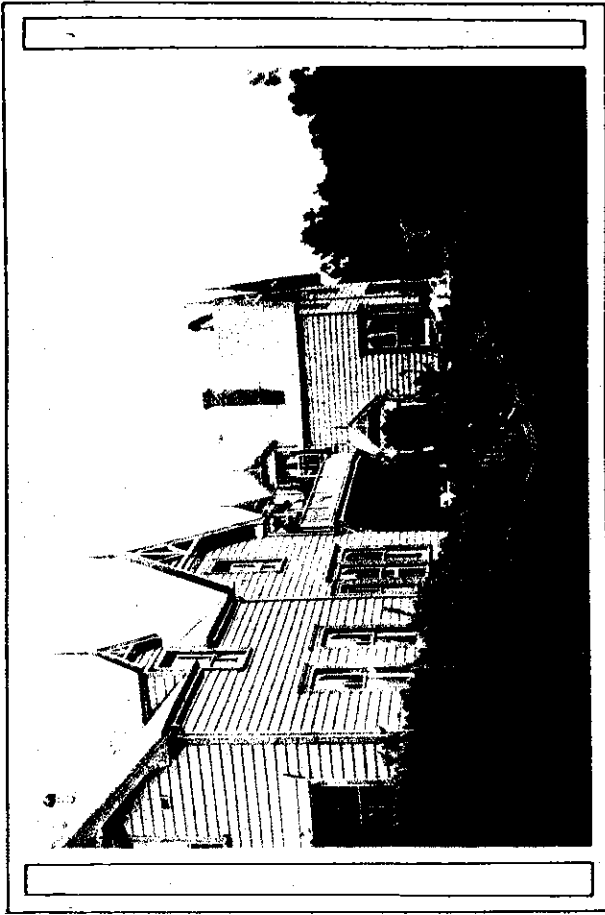
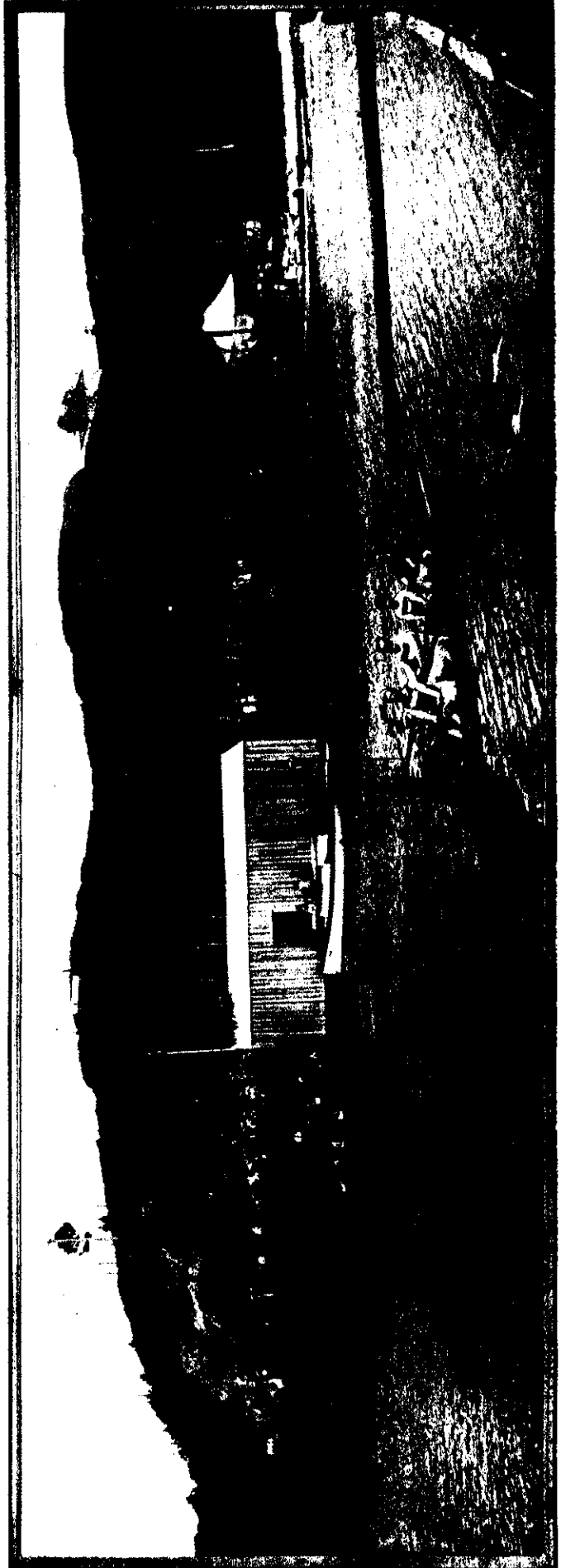


ATCKLAND'S BIG MOTOR FIRE PUMP—THE LARGEST EVER BUILT. The pump, which arrived in Auckland last week, brought a 125 h.p., six cylinder, Deane's turbine fire pump for the Auckland Fire Department. The new engine can throw 800 gallons of water per minute, pumping either from the harbour or from the ordinary street hydrants.



SOVELL, PHOTO. DESTROYED BY FIRE—THE HUKAREHE MAORI GIRLS' SCHOOL NEAR NAPIER. The building was a very old landmark of Hawke's Bay, having been established by the late Bishop Williams, the first Bishop of Waiapu, in 1875.



WHANGAREI ROWING CLUB OPENS THE SEASON FOR 1910-11—PANORAMIC VIEW OF THE RIVER.

Mitchell, photo. The Whangarei Rowing Club opened the season on Thursday last. The club now has a large membership and up-to-date stock of racing boats. In the foreground is seen the winners of the President's Tuiul Four, in which seven crews competed. The names are:—T. Allen (stroke), H. Haynes (2), Murray (bow), and Dent (cox).