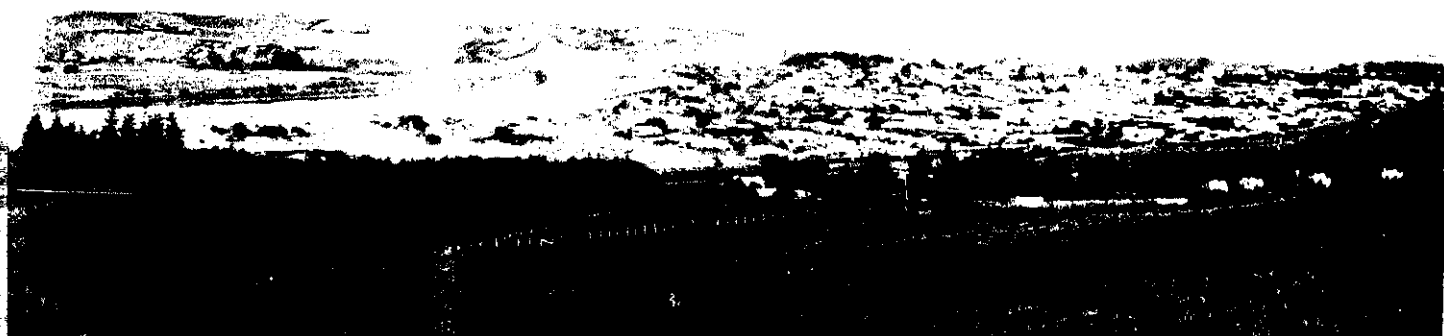


D.—Wanganui Reaches Out to the Hills.



of Peter. The first rebel outbreak in the vicinity occurred in 1848, when natives, led by Maketu, murdered the Gillman family, and held possession of the land though garrisoned by troops. Hills were sent, while 2000 troops left for the front up the river. Previous to this, on June 5, 1845, at Kaitiaki, 28 rebels were killed, and 11 Europeans killed or wounded. On December 2, the township has made rapid progress, and today is spreading over the neighbouring hills at a pace that will soon entitle it to the full civic honours of the current colonial designation. The in the foreground is the main highway to Palmerston North, and on the right are the gasworks. (1) A scene on the upper reaches of the Wanganui River. (2) Wanganui from Turite Hill. (3) In the middle St. John's Hill, and on the right Aramoho, with the river steamer wharves in the foreground.